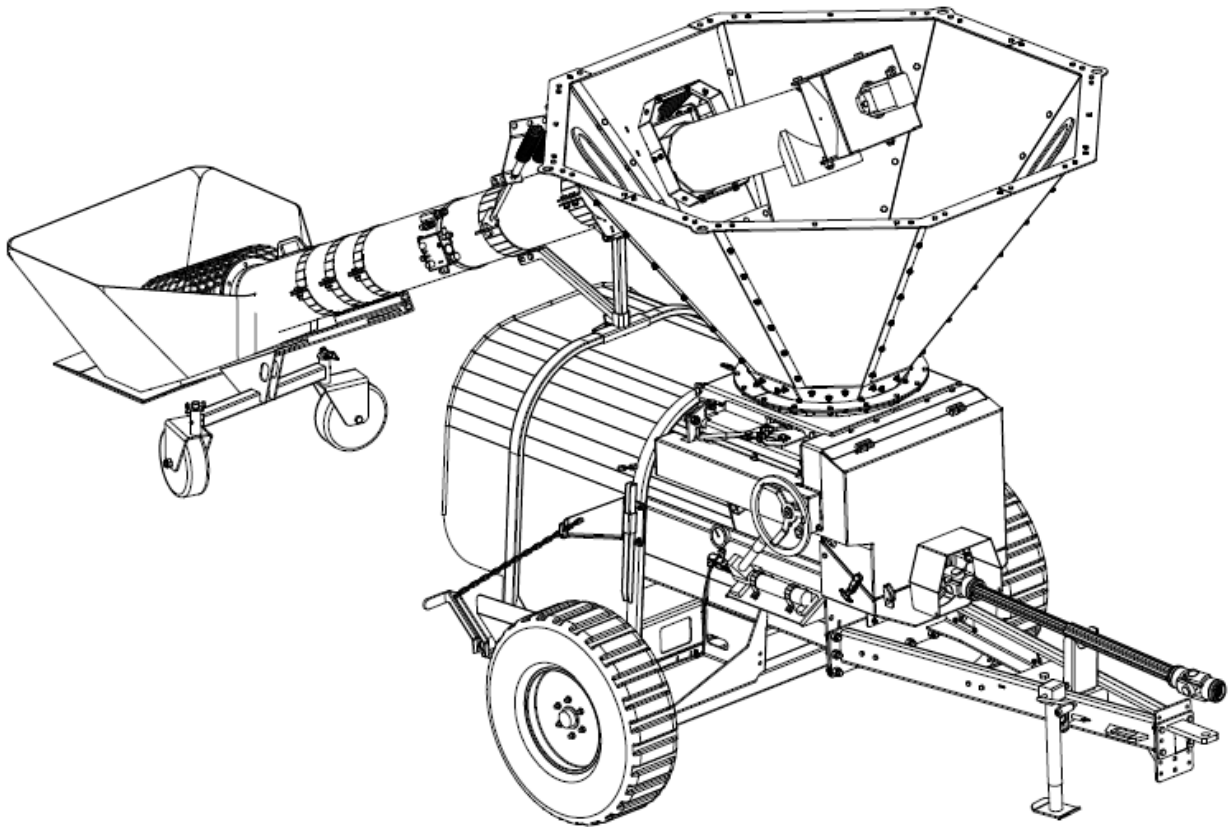




**ANDERSON**

**Grain-Bagger  
GB-5 & GB-6**



Update Instruction and Part List  
Owner's Manual Add-on

# GB5-GB6 (2011-2012) Belt Transmission Update Maintenance

---



## Dubl-V Belts

Belts must always be kept under adequate tension. If belts are dirtied with oil it must be cleaned with an alkaline cleaner. Do not use gas or similar products to clean belts.

All belts (8) should be replaced at the same time.

The belt tension should be checked after the first 10 hours of use following first start-up or the replacement of belts. Afterwards, it is recommended to check the tension of the belt every 50 hours or twice a year.

## Adjusting the belt tension

1. Open the mobile front guard.
2. Measure the applied force (T) needed to get a displacement (F) of 9,5 mm (3/8 in) of the belt in the center of the span (pulley 1 – pulley 2). (See Fig. 1).
3. If needed adjust the spring (D) length to adjust the belts tension. (See Fig. 2) Loosen the nut (B).
4. Tighten or loosen the nut (C), to obtain a spring (D) length around 125 mm (5 in).
5. Verify the belts tension (see step 2) and readjust spring length if needed.
6. Tighten the nut (B).

---

**NOTE:** A Pencil-Type Tension Tester (30 lb) is recommended to measure the belt tension. This tool can be available in any mechanical part supplier or at any Anderson dealer by ordering the part no. 322167.

---

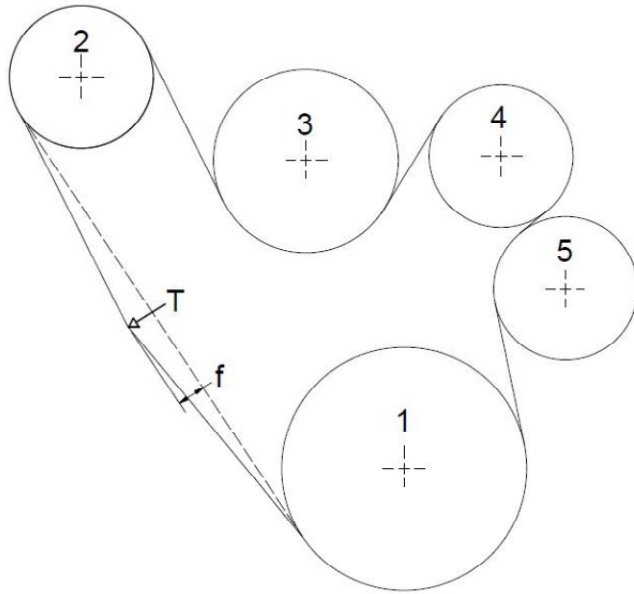


Fig. 1

Table 1. Force needed to get a displacement of 9,5 mm (3/8 in)

Force	New belts	Used Belts
Min.	4,3 kg (9,6 lb)	3,8 kg (8,3 lb)
Max.	4,7 kg (10,3 lb)	4,1 kg (9,0 lb)

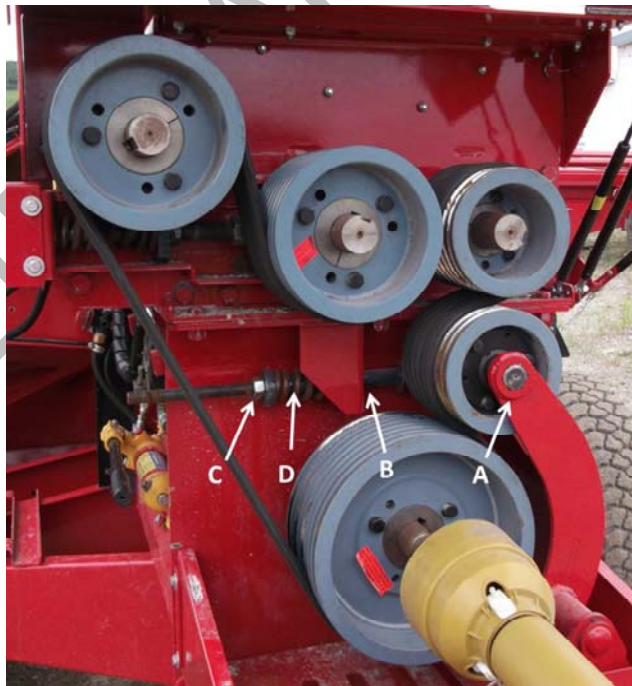
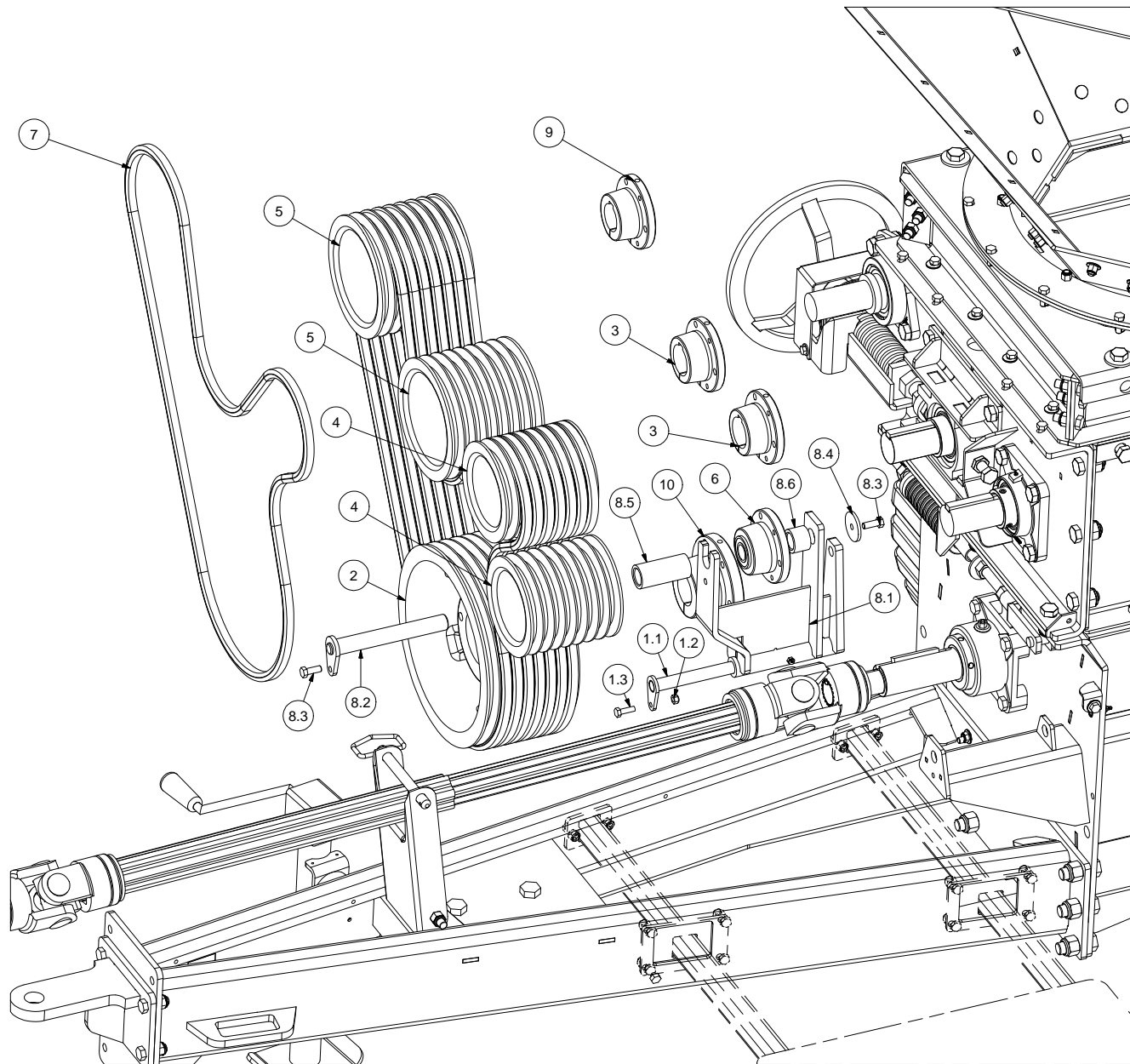


Fig. 2

# U01 - BELT DRIVE UPDATE / MISE A JOUR TRANS. COURROIES

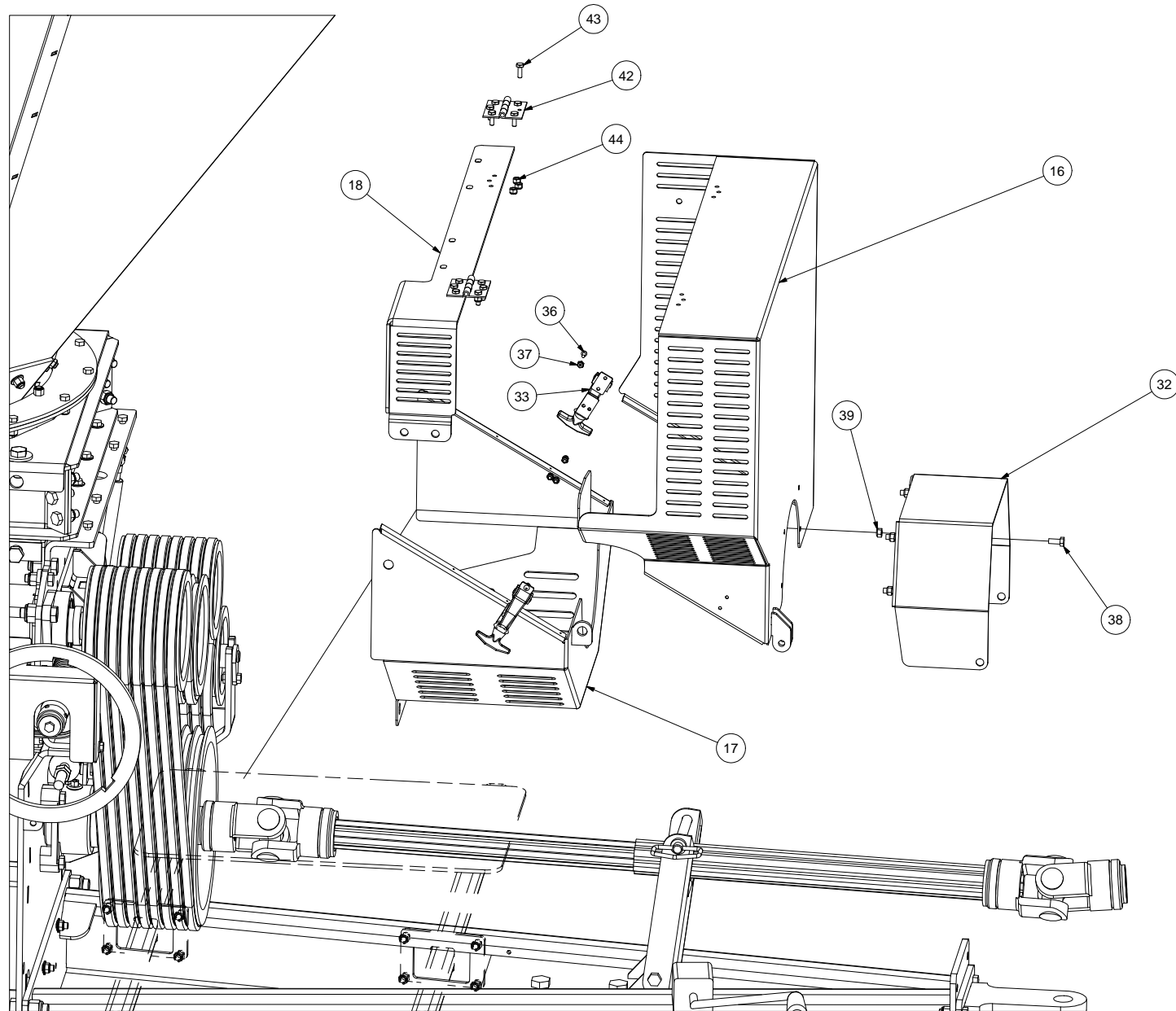


# U01 - BELT DRIVE UPDATE / MISE A JOUR TRANS. COURROIES



ITEM	QT	PART/PIECE	ENGLISH DESCRIPTION	DESCRIPTION FRANCAISE	NOTE
1.1	1	239046	PIN	GOUPILLE	
1.2	7	501031	NYLON NUT 5/16-18	ÉCROU NYLON 5/16-18	
1.3	1	500044	HEX BOLT GR5 5/16-18 X 1	BOULON HEX GR5 5/16-18 X 1	
2	1	325155	POULIE 8 GROOVES BELT "B" 12.4 DD	POULIE 8 GROOVES COURROIE "B" 12.4 DD	
3	2	325156	BUSHING QD TYPE SF 50mm DIA.	BUSHING QD TYPE SF 50mm DIA.	
4	2	325185	POULIE 8 GROOVES BELT "B" 6.0 DD	POULIE 8 GROOVES COURROIE "B" 6.0 DD	
5	2	325186	POULIE 8 GROOVES BELT "B" 7.4 DD	POULIE 8 GROOVES COURROIE "B" 7.4 DD	
6	1	325158	IDLER BUSHING QD SF	IDLER BUSHING QD SF	
7	8	322635	BELT BB94	COURROIE BB94	
8.1	1		TENSIONNER	TENDEUR	
8.2	1		PIN	AXE	
8.3	2	500084	HEX BOLT GR5 3/8 X 1 NC	BOULON HEX GR5 3/8 X 1 NC	
8.4	1		WAHSER	RONDELLE	
8.5	1		SPACE BUSHING	BAGUE D ESPACEMENT	
8.6	1		SPACE BUSHING	BAGUE D ESPACEMENT	
9	1	325188	BUSHING QD TYPE SF 45mm DIA.	BUSHING QD TYPE SF 45mm DIA.	
10	1	325187	BUSHING QD TYPE E 2 in DIA.	BUSHING QD TYPE E 2 po DIA.	

# U02 - GUARD UPDATE / MISE A JOUR GARDES

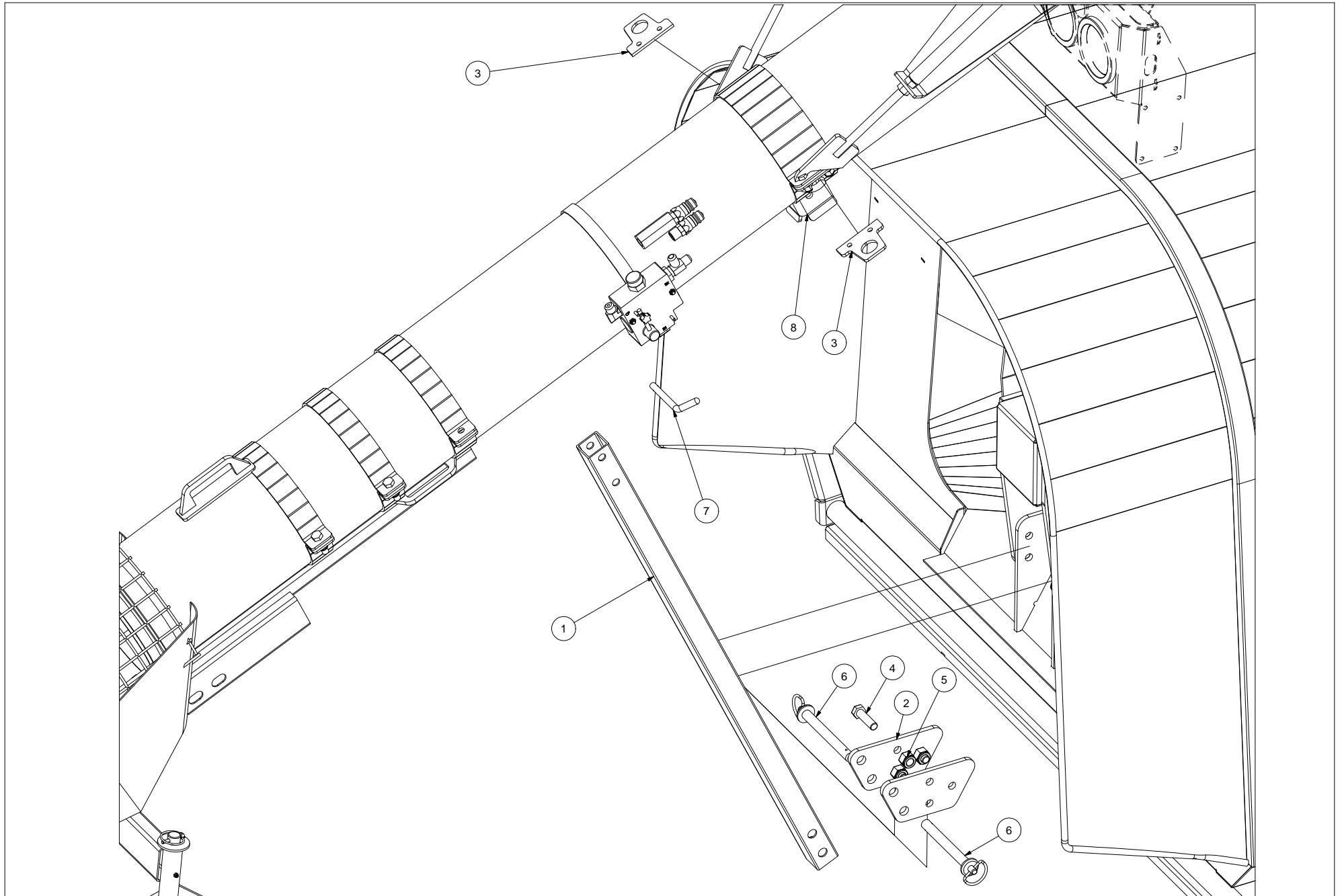


# U02 - GUARD UPDATE / MISE A JOUR GARDES



ITEM	QT	PART/PIECE	ENGLISH DESCRIPTION	DESCRIPTION FRANCAISE	NOTE
16	1		UPPER GUARD	GARDE DU HAUT	
17	1		LOWER GUARD	GARDE DU BAS	
18	1		GUARD SUPPORT	SUPPORT DE GARDE	
32	1		DRIVE SHAFT GUARD	GARDE DE CARDAN	
33	2	325125	LATCH	LOQUET	
36	8	507081	PHILLIPS ROUND HEAD MACHINE SCREW 10/24 X 1/2 Z	VIS MÉCANIQUE CROIX TÊTE RONDE 10/24 X 1/2 Z	
37	8	501050	NYLON NUT	ÉCROU NYLON	
38	4	500042	HEX BOLT GR5 5/16-18 X 3/4	BOULON HEX GR5 5/16-18 X 3/4	
39	4	501031	NYLON NUT	ÉCROU NYLON	
42	2	325167	HINGE	PENTURE	
43	12	500004	BOLT	BOULON	
44	12	501030	NYLON NUT	ÉCROU NYLON	

# U03 - AUGER SUPPORT / SUPPROT DE VIS



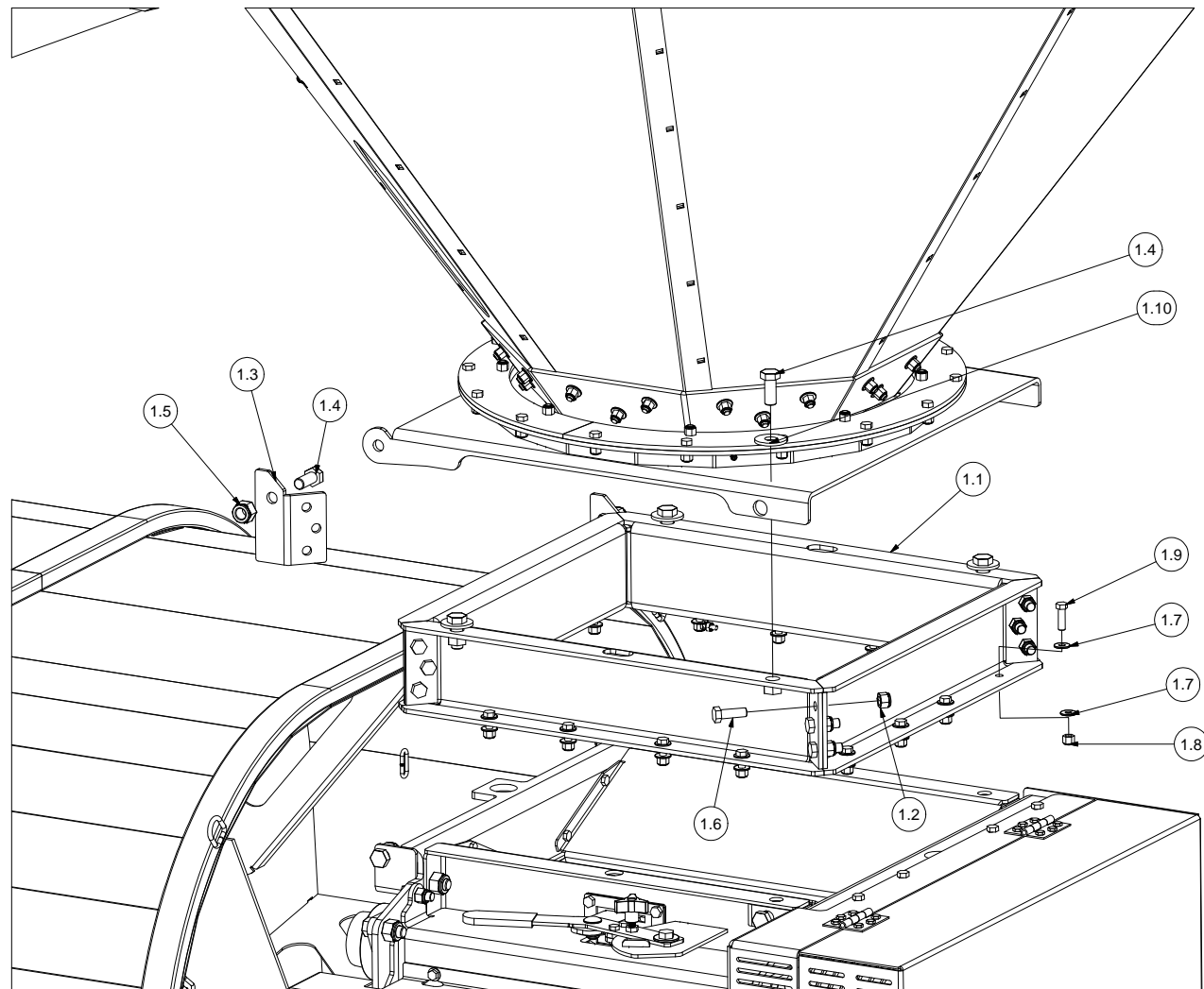


# U03 - AUGER SUPPORT / SUPPROT DE VIS



ITEM	QT	PART/PIECE	ENGLISH DESCRIPTION	DESCRIPTION FRANCAISE	NOTE
1	1		TRANSPORT AUGER SUPPORT	SUPPORT DE VIS POUR TRANSPORT	
2	1		SUPPORT FIXATION PLATE	PLAQUE DE FICATION DU SUPPORT	
3	2		SPRING RETAINING RING	ANNEAU DE RETENUE DES RESSORTS	
4	6	500247	HEX BOLT GR5 5/8-11 X 2 1/4	BOULON HEX GR5 5/8-11 X 2 1/4	
5	6	501035	NYLON NUT	ÉCROU NYLON	
6	2	320126	HITCH PIN WITH TETHER 3/4- 6 1/4	PIN AVEC POIGNEE 3/4 X 6 1/4	
7	1	320098	HITCH PIN 1/2 X 3	PIN PLIEE 1/2 X 3	
8	1		COLLAR	COLLET	

# U04 - HOPPER RAISING / RELEVAGE DE TREMIE



# U04 - HOPPER RAISING / RELEVAGE DE TREMIE



ITEM	QT	PART/PIECE	ENGLISH DESCRIPTION	DESCRIPTION FRANCAISE	NOTE
1.1	2		RAISING BOX	BOITIER DE RELEVAGE	
1.2	12	501034	NYLON NUT	ÉCROU NYLON	
1.3	1		HOPPER PIVOT	PIVOT DE TREMIE	
1.4	6	500243	BOLT	BOULON	
1.5	2	501035	NYLON NUT	ÉCROU NYLON	
1.6	12	500177	BOLT	BOULON	
1.7	32	502004	FLAT WASHER	RONDELLE	
1.8	16	501032	NYLON NUT	ÉCROU NYLON	
1.9	16	500086	BOLT	BOULON	
1.10	4	502008	FLAT WASHER 5/8 Z	RONDELLE PLATE 5/8 Z	



**GROUPE ANDERSON**

5125 de la Plaisance  
Chesterville (Québec)  
CANADA G0P 1J0

Email : [service@grpanderson.com](mailto:service@grpanderson.com)  
Tel. : 1-819-382-2952  
Fax. : 1-819-382-2218  
[www.grpanderson.com](http://www.grpanderson.com)