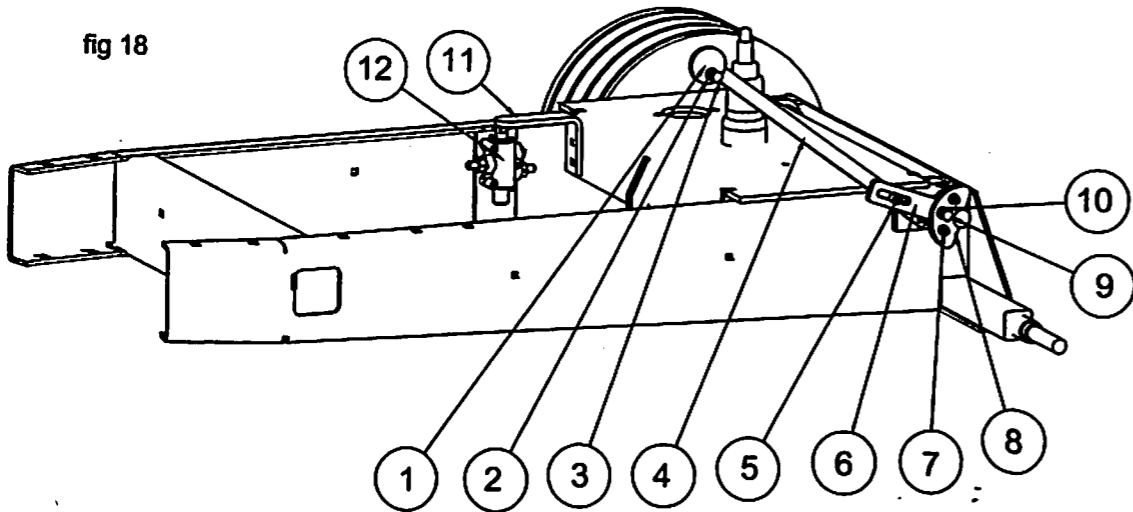


### CUT AND HOLD TRIGGER OFF

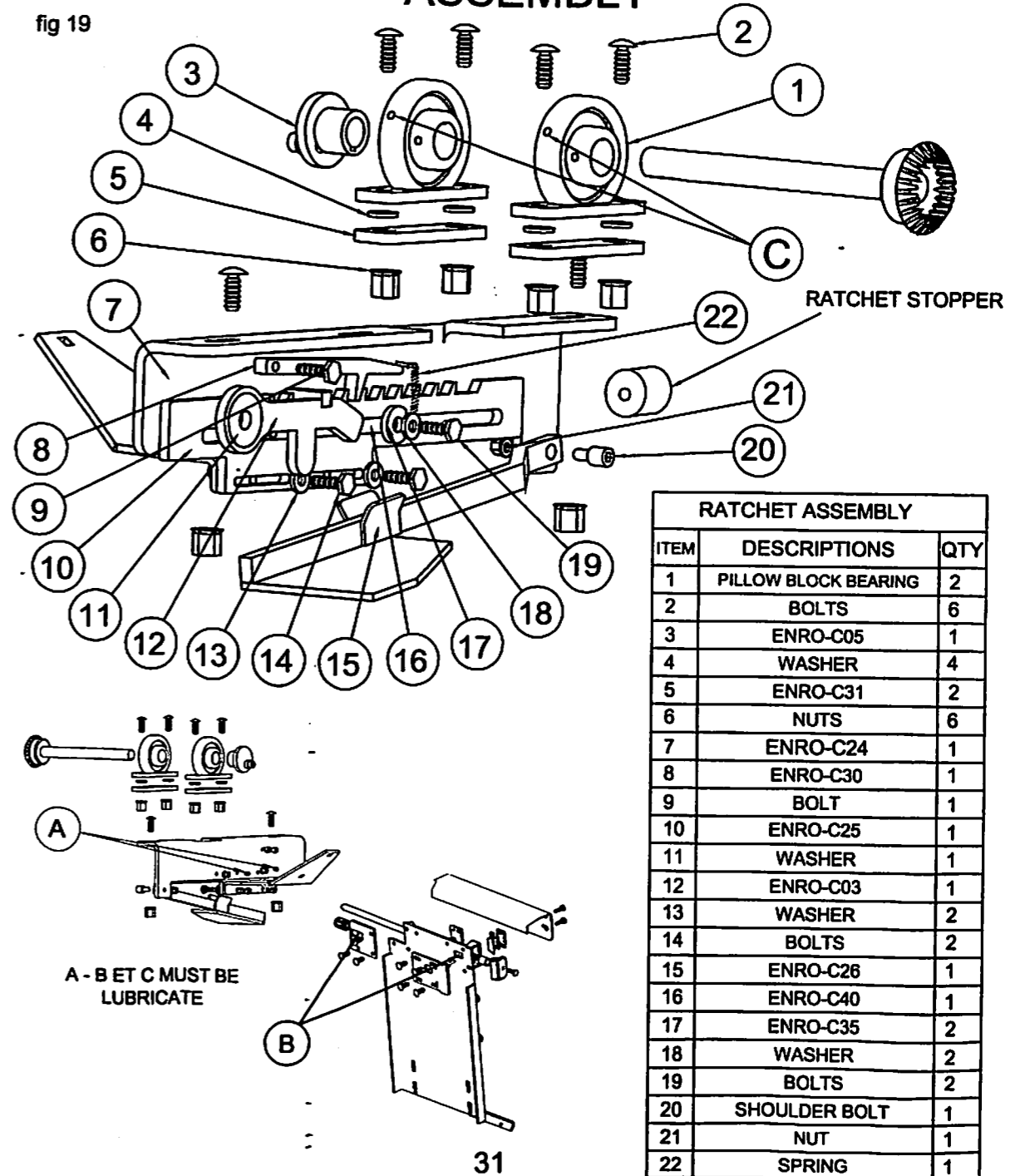
CUT AND HOLD TRIGGER OFF		
ITEM	DESCRIPTIONS	QTY
1	ENRO-C44	1
2	WASHER	1
3	BOLT	1
4	ENRO-C27	1
5	SHOULDER BOLT	1
6	ENRO-C08	1
7	NUTS	2
8	ENRO-C08A	1
9	BOLT	1
10	WASHER	1
11	ENRO-TB15	1
12	VALVE	1

fig 18



### CUT AND HOLD RATCHET ASSEMBLY

fig 19



RATCHET ASSEMBLY		
ITEM	DESCRIPTIONS	QTY
1	PILLOW BLOCK BEARING	2
2	BOLTS	6
3	ENRO-C05	1
4	WASHER	4
5	ENRO-C31	2
6	NUTS	6
7	ENRO-C24	1
8	ENRO-C30	1
9	BOLT	1
10	ENRO-C25	1
11	WASHER	1
12	ENRO-C03	1
13	WASHER	2
14	BOLTS	2
15	ENRO-C26	1
16	ENRO-C40	1
17	ENRO-C35	2
18	WASHER	2
19	BOLTS	2
20	SHOULDER BOLT	1
21	NUT	1
22	SPRING	1

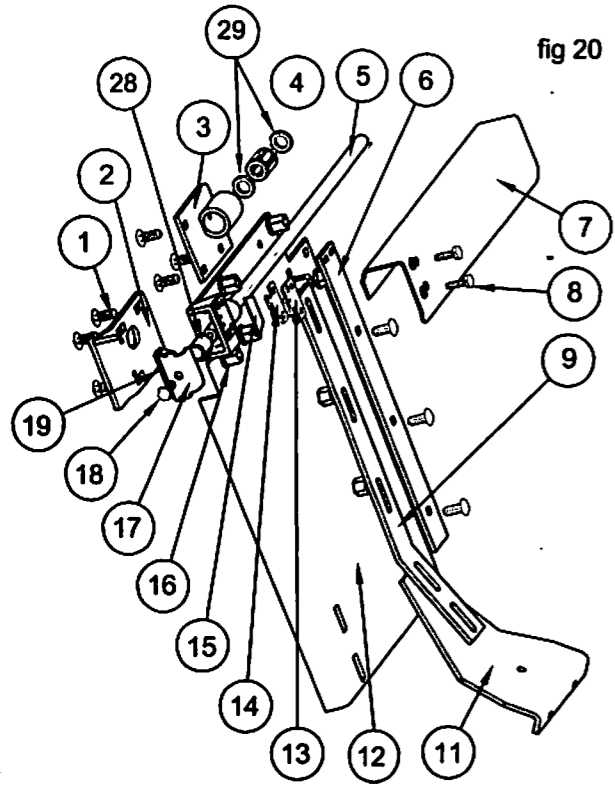


fig 20

CUT AND HOLD ASSEMBLY		
ITEM	DESCRIPTION	QTY
1	BOLTS	10
2	ENRO-C19	1
3	ENRO-C16	1
4	LINEAR BEARING	1
5	ENRO-C36	1
6	ENRO-C10	1
7	SHIELD	1
8	BOLTS	2
9	ENRO-C20	1
10	BOLTS	8
11	ENRO-C21	1
12	ENRO-C17	1
13	ENRO-C13	2
14	ENRO-C14	1
15	BLADE	1
16	NUTS	10
17	ENRO-C11	1
18	BOLT	1
19	ROLLER HOLDER	1
20	AXLE	1
21	AXLE	1
22	45° GEAR	2
23	SPRING	1
24	NUTS	4
25	BOLTS	2
26	ENRO-C18	1
27	NUTS	8
28	BRONZE BUSHING	1
29	OIL SEAL	2

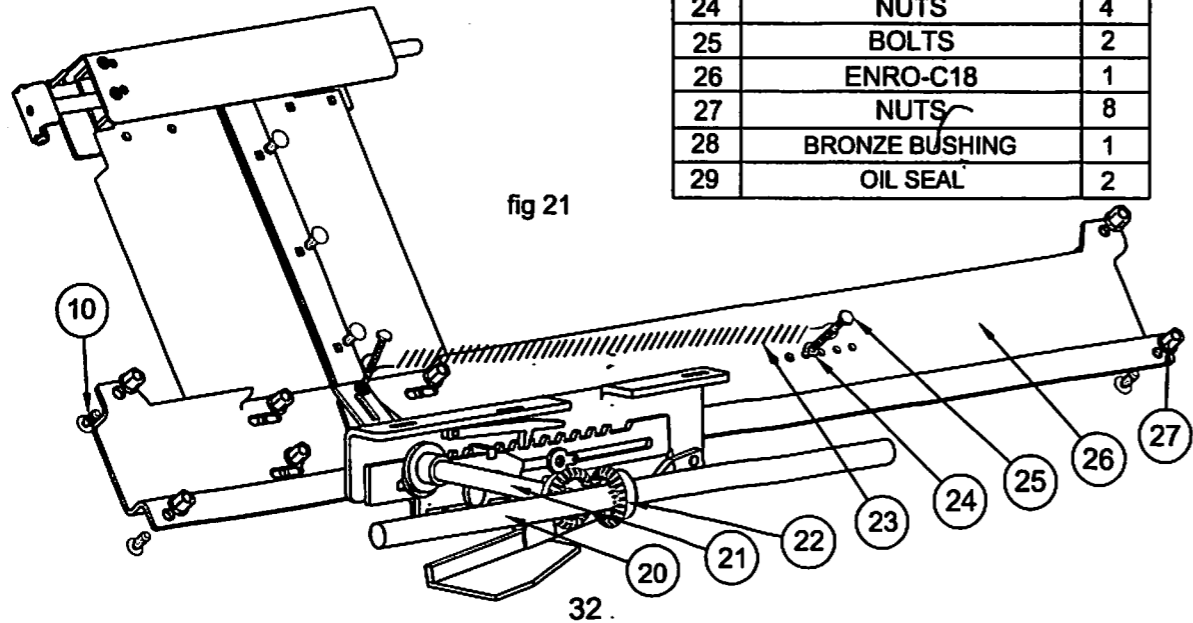
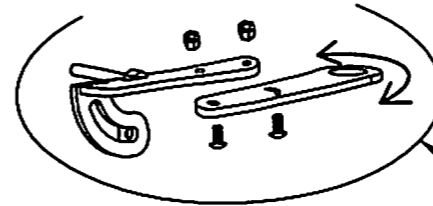


fig 21

NOTE:  
THE LEVER ARM MUST BE ADJUST  
IN SUCH A WAY THAT THE  
PLASTIC ROLLER WILL BE  
PARALLEL TO ROLLER  
STRETCHER.



STRETCHER ASSEMBLY		
ITEM	DESCRIPTION	QTY
1	STICKER	1
2	STRETCHER SUPPORT	1
3	NUT	1
4	WASHER	1
5	BOLT	1
6	COUNTER BRACKET	1
7	SPRING	1
8	HOOK	1
9	BOLTS	2
10	SNAP RING	2
11	BEARING	2
12	PLASTIC SUPPORT	2
13	NUTS	2
14	BOLT GRIP	1
15	LEVER ARM	1
16	NUT	1
17	NUTS	2
18	BOLTS	2
19	NUTS	2
20	WASHERS	2
21	BOLTS	2
22	SHIELD	1
23	GEAR	1
24	GEAR	1
25	SNAP RING	4
26	BEARING	4
27	KEY	2
28	ENRO-T19A	2
29	ROLLERS	2
30	STRETCHER FRAME	1
31	ENRO-T19	2

## STRETCHER

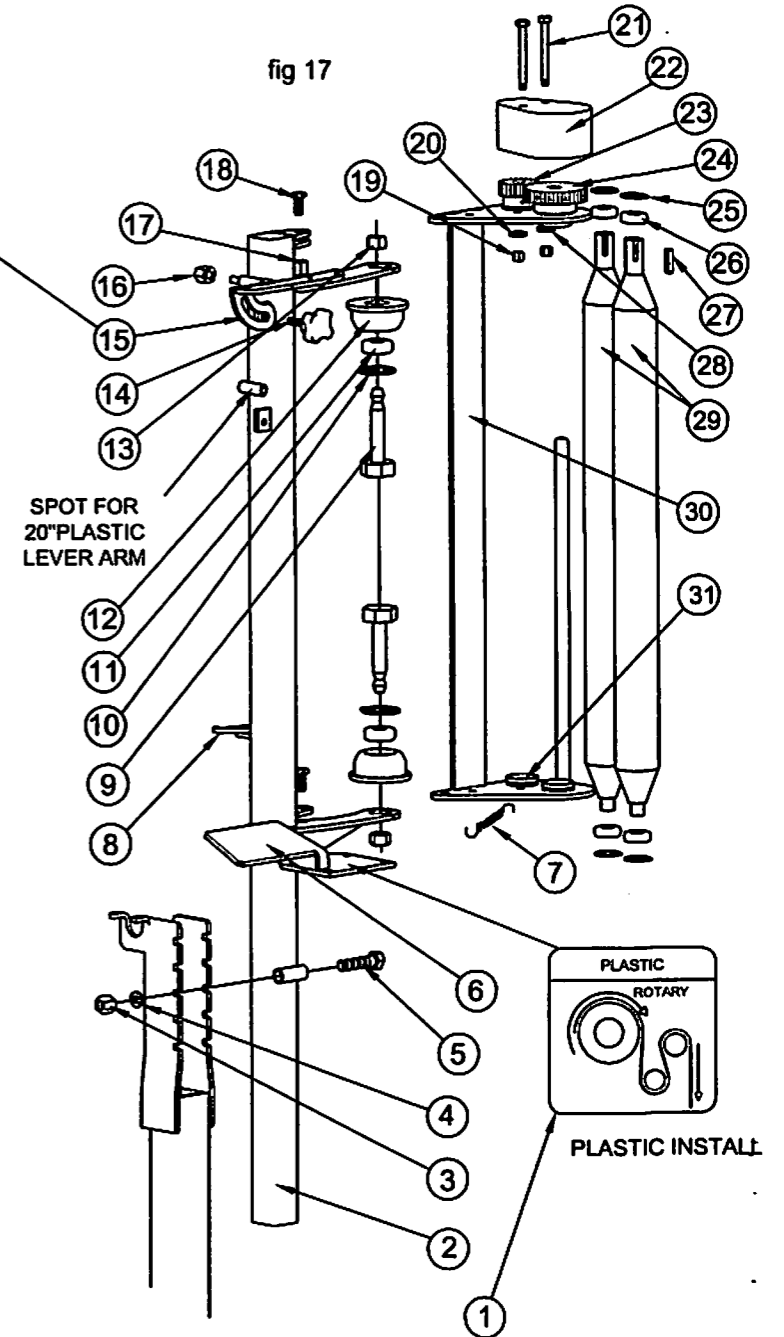
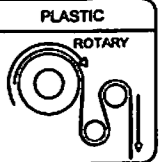


fig 17

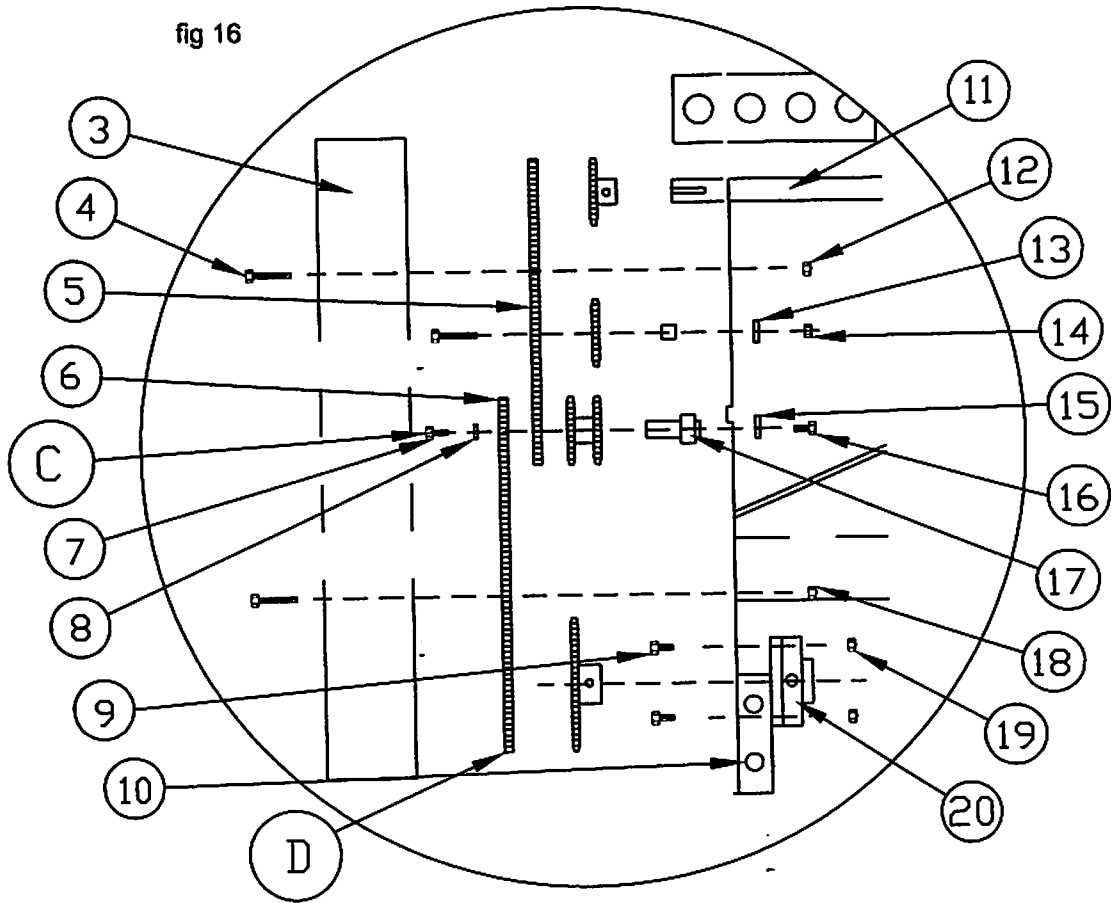
SPOT FOR  
20" PLASTIC  
LEVER ARM



PLASTIC  
ROTARY  
INSTALL

# TRANSMISSION DETAIL

fig 16



TRANSMISSION		
ITEM	DESCRIPTION	QTY
1	45° GEAR	1
2	COVER	1
3	SHIELD	1
4	BOLTS	2
5	CHAIN	1
6	CHAIN	1
7	BOLTS	1
8	WASHER	1
9	BOLTS	8
10	ROTARY TABLE	1

11	AXLE	1
12	NUT	1
13	WASHER	1
14	NUT	1
15	WASHER	1
16	BOLT	1
17	ENRO-TP07	1
18	NUT	1
19	NUTS	8
20	FLANGE BEARING	4

NOTE:  
A-B-C et D MUST BE  
LUBRICATE.

# LD FRAME

ITEM	DESCRIPTIONS	QTY
1	TIRE 20.5X10X10	2
2	LD FRAME	2
3	TONGUE	1
4	STRETCHER ARM	2
5	ADJUSTABLE HITCH	1
6	JACK	1
7	CONTERBALANCE	1

# LD FRAME

fig 22

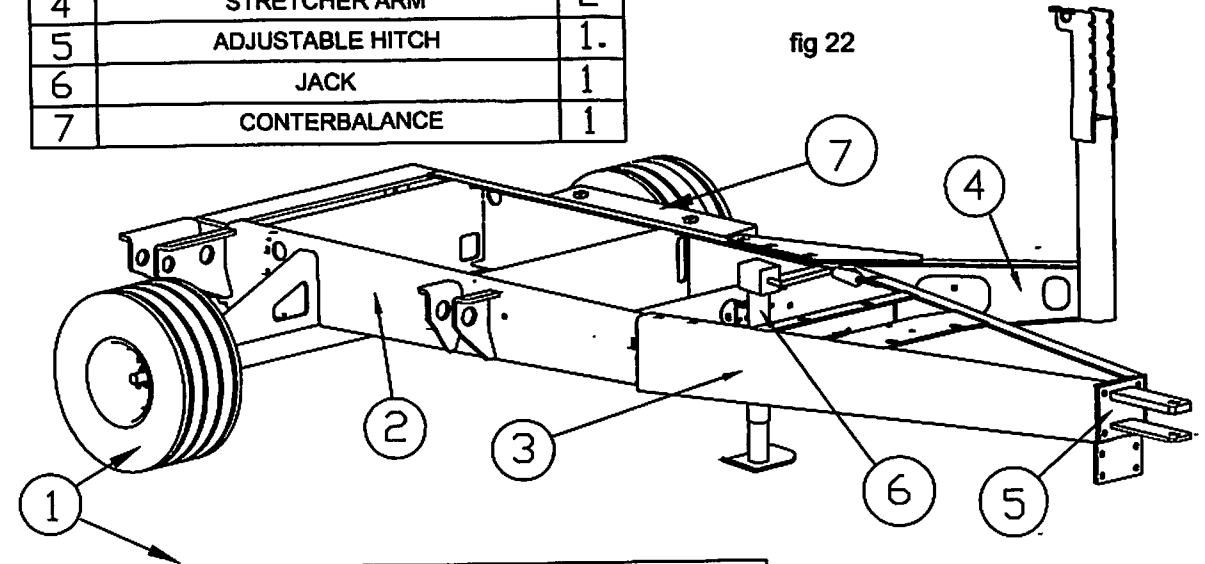
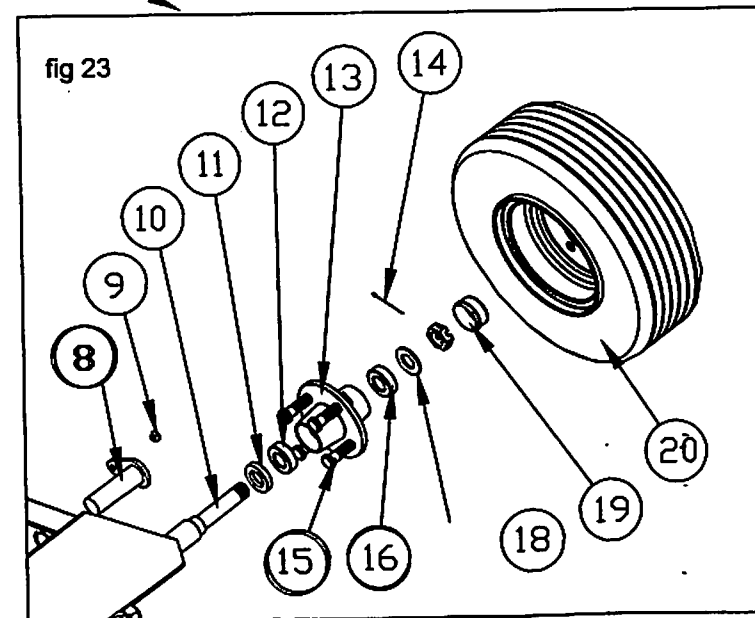


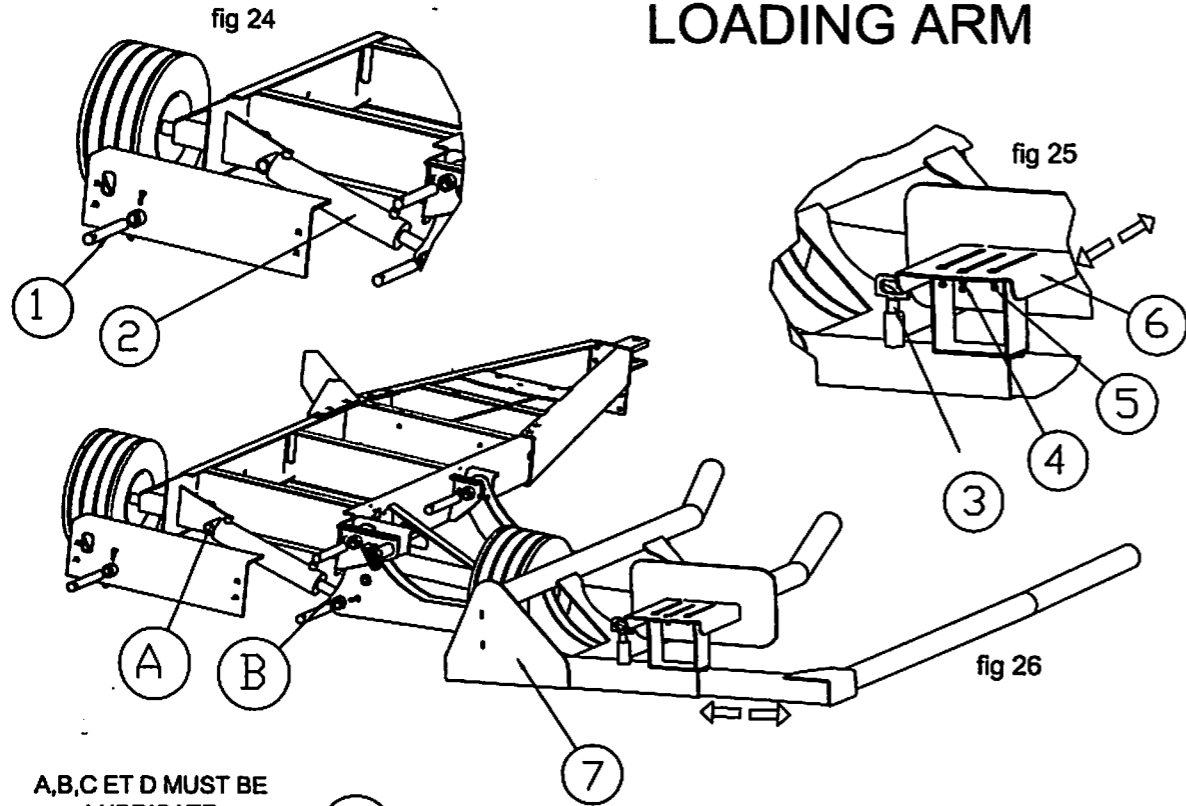
fig 23



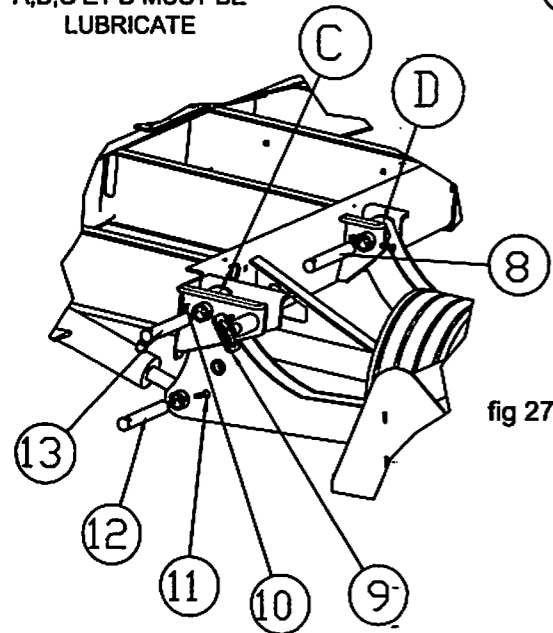
# WHEEL ASSEMBLY

8	PIN	2
9	BOLTS	2
10	AXLE	2
11	OIL SEAL	2
12	BEARING	2
13	HUB	2
14	CUTTER PIN	2
15	BOLTS	10
16	BEARING	2
17	WASHERS	2
18	NUTS	2
19	DUST CAP	2
20	TIRE 20.5x10x10plis	2

# LOADING ARM



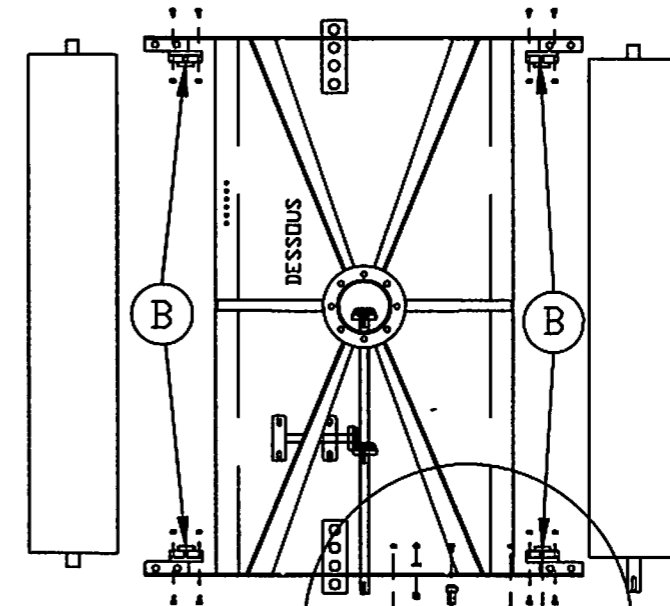
A,B,C ET D MUST BE LUBRICATE



LOADING ARM		
ITEM	DESCRIPTIONS	QTY
1	PIN	1
2	CYLINDER	1
3	LOCK PIN	1
4	BOLTS	3
5	ÉCROUS	3
6	BALE STOPPER	1
7	LOADING ARM	1
8	PIN	1
9	LOCK PIN	1
10	NUTS	3
11	BOLTS	3
12	PIN	1
13	PIN	1

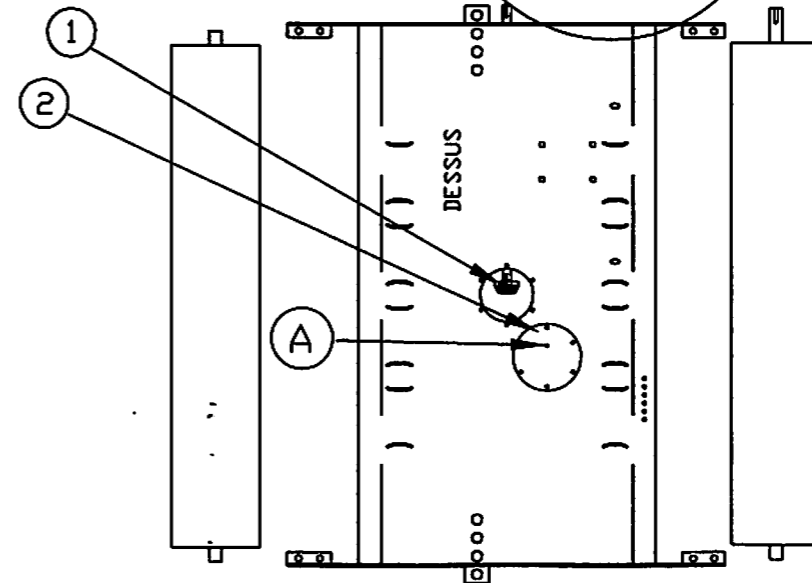
# TRANSMISSION

fig 15

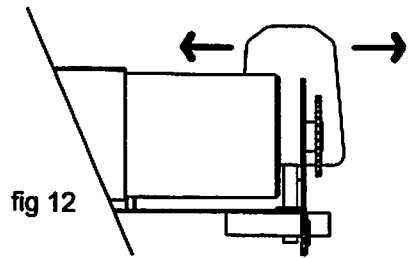


DESCRIPTION NEXT PAGE

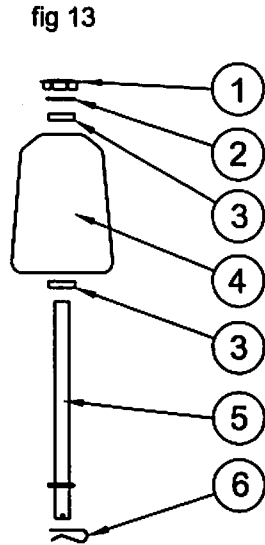
DETAIL NEXT PAGE



## SUPPORT ROLLER

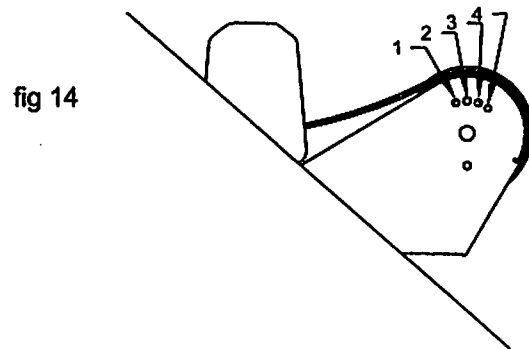


You must adapt the support roller to the bale dimension then you lock the axle of the support roller with a hitch pin under the table.



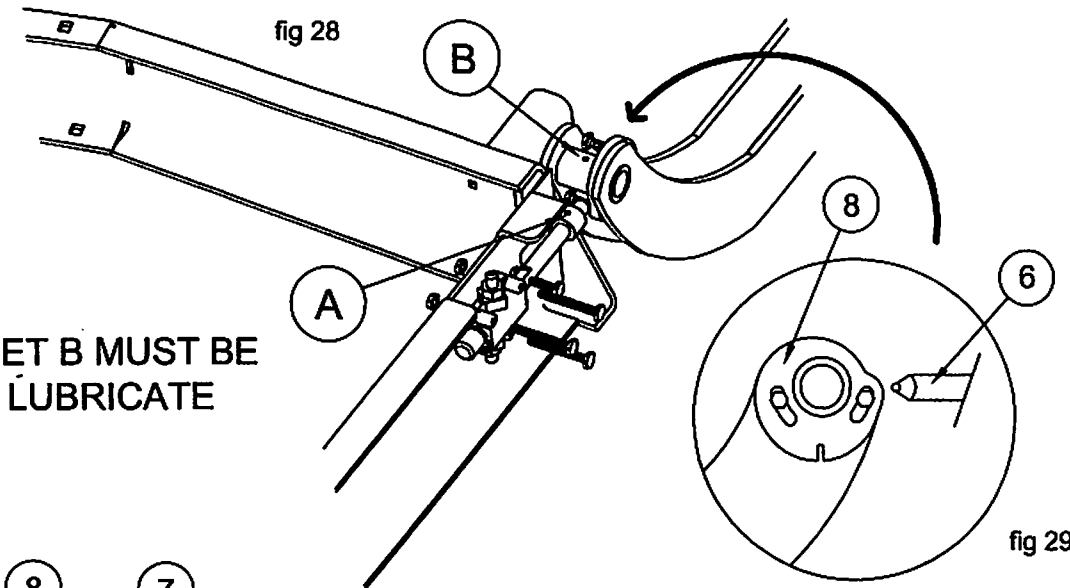
SUPPORT ROLLER		
ITEM	DESCRIPTION	QTY
1	CAP	2
2	SNAP RING	2
3	BEARING	4
4	ROLLER	2
5	AXLE	2
6	HITCH PIN	2

You can also adapt the table to the diameter of the bale.



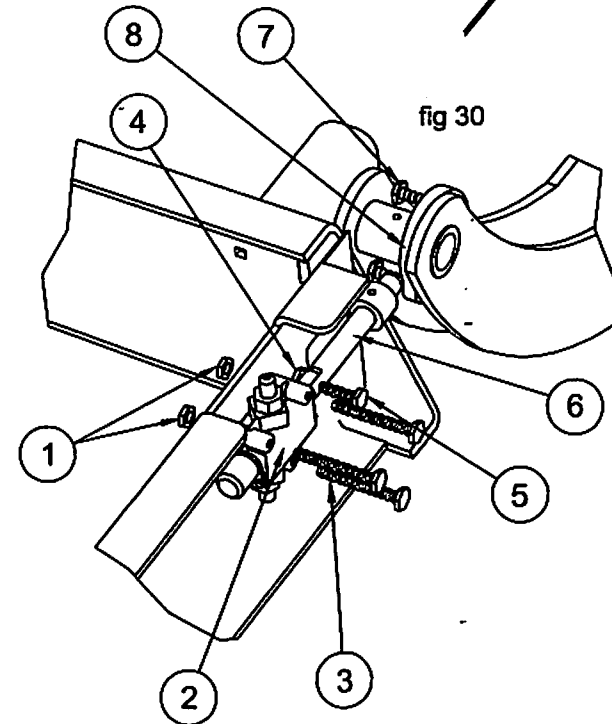
The two big roller of the table are set in factory for a 4 1/2 feet bale diameter. Perhaps you'll have to move the roller if the diameter of the bale is different. If you do so, you'll get a better contact between de bale and the straps.

## LOCK VALVE FOR LOADING ARM



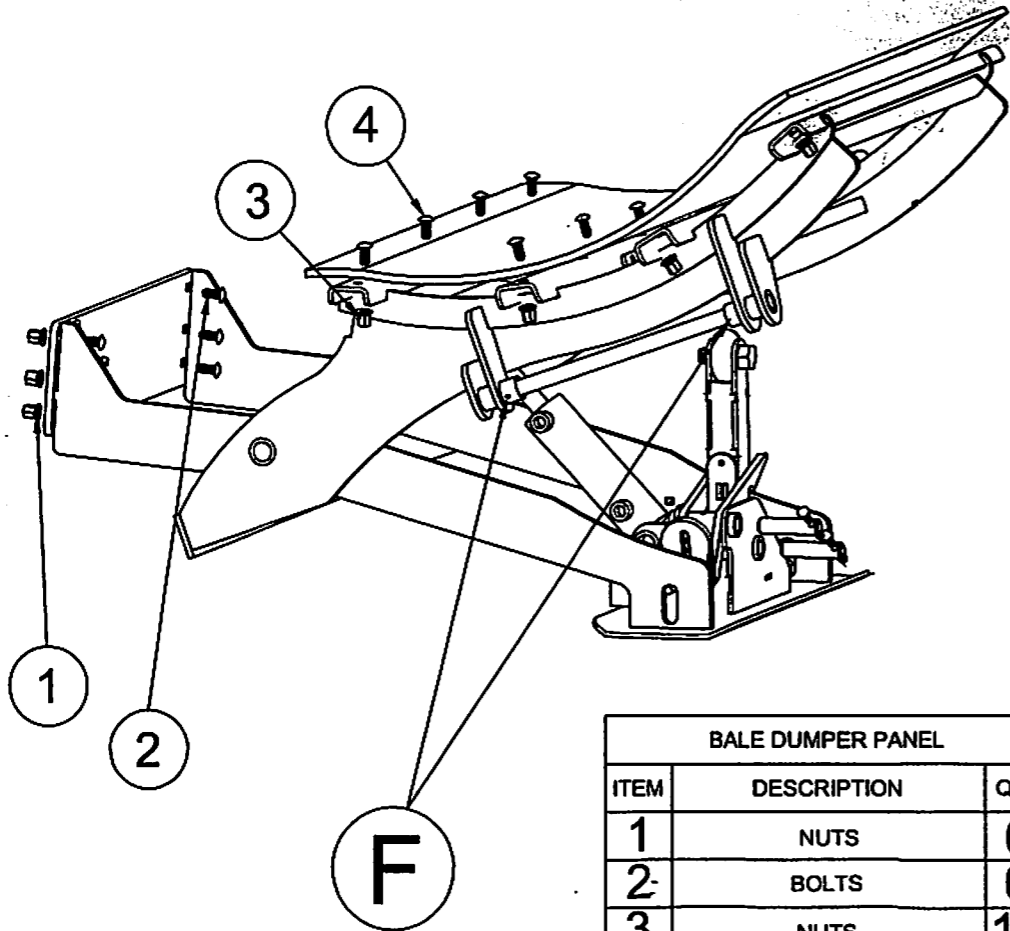
A ET B MUST BE LUBRICATE

CAM ADJUSTMENT FOR LOCK VALVE ACTIVATOR.



LOCK VALVE		
ITEM	DESCRIPTION	QTY
1	NUTS	3
2	LOCK VALVE	1
3	BOLTS	3
4	NUTS	1
5	BOLTS	1
6	ACTIVATOR	1
7	BOLTS	2
8	CAM ADJUSTMENT	1

## BALE DUMPER PANEL

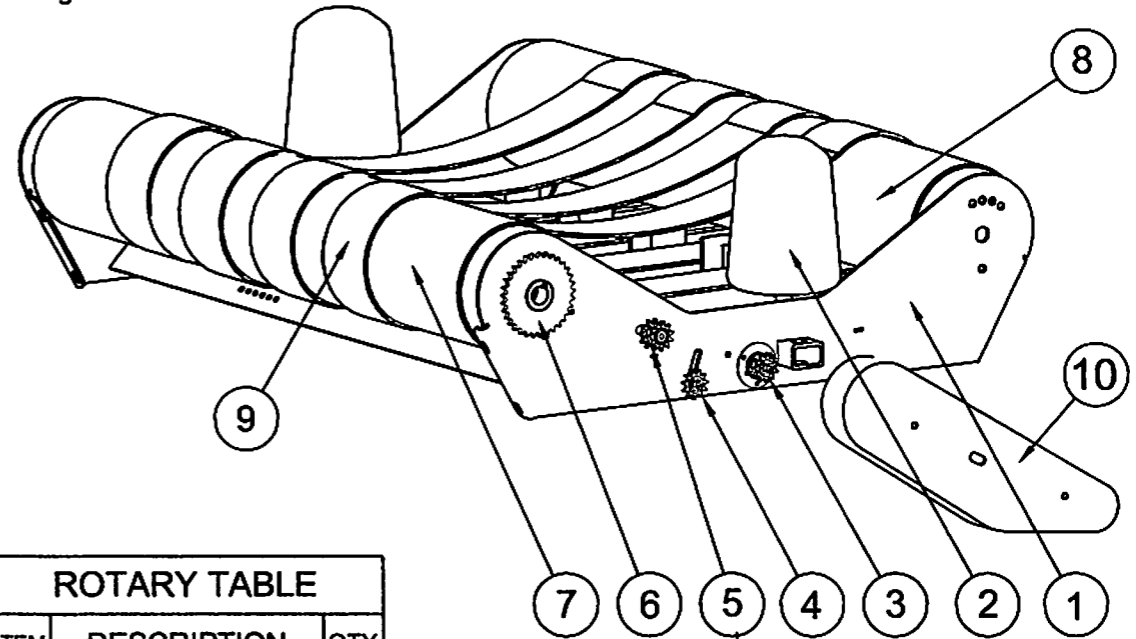


F MUST BE LUBRICATE

BALE DUMPER PANEL		
ITEM	DESCRIPTION	QTY
1	NUTS	6
2	BOLTS	6
3	NUTS	16
4	BOLTS	16

## ROTARY TABLE

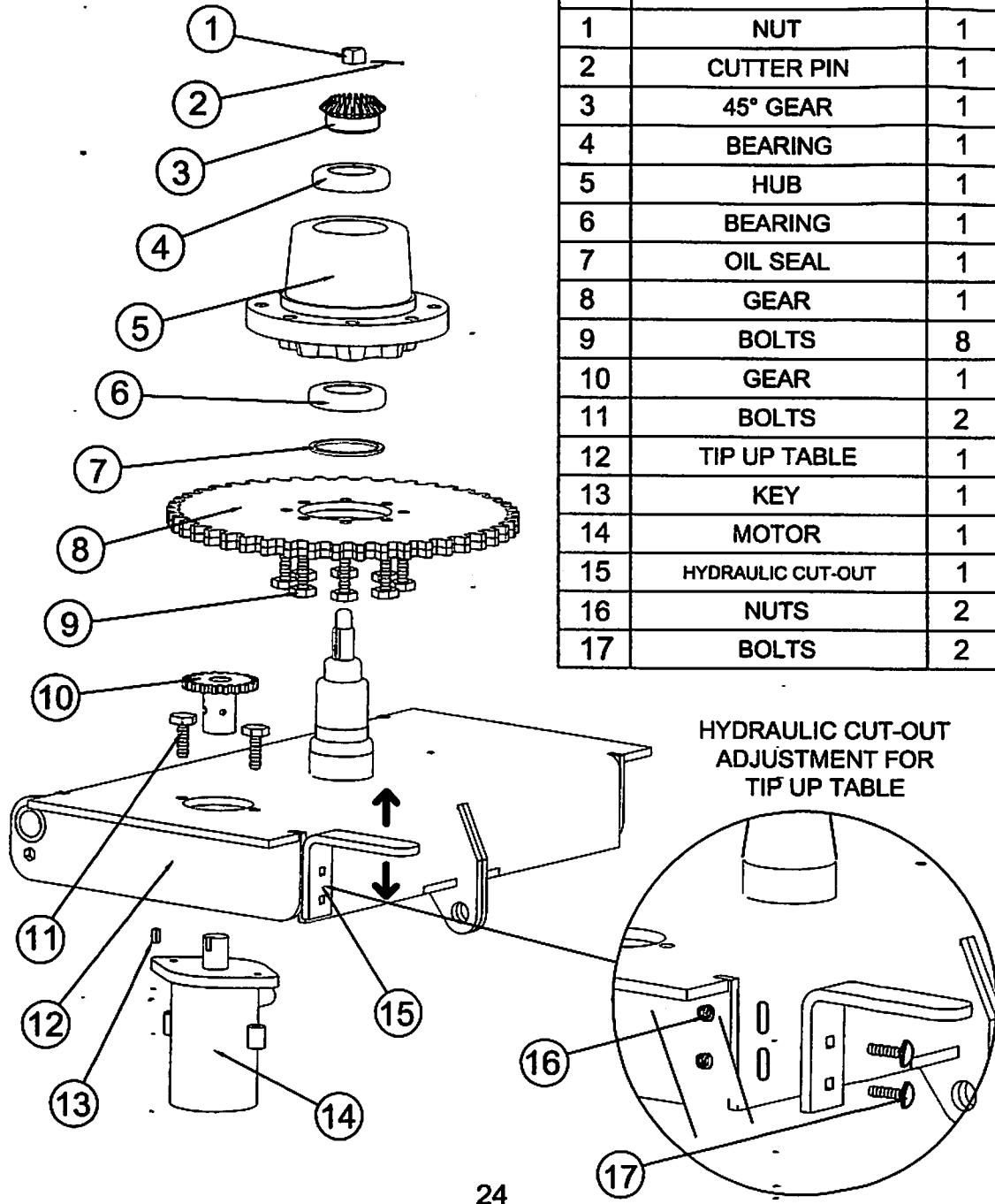
fig 11



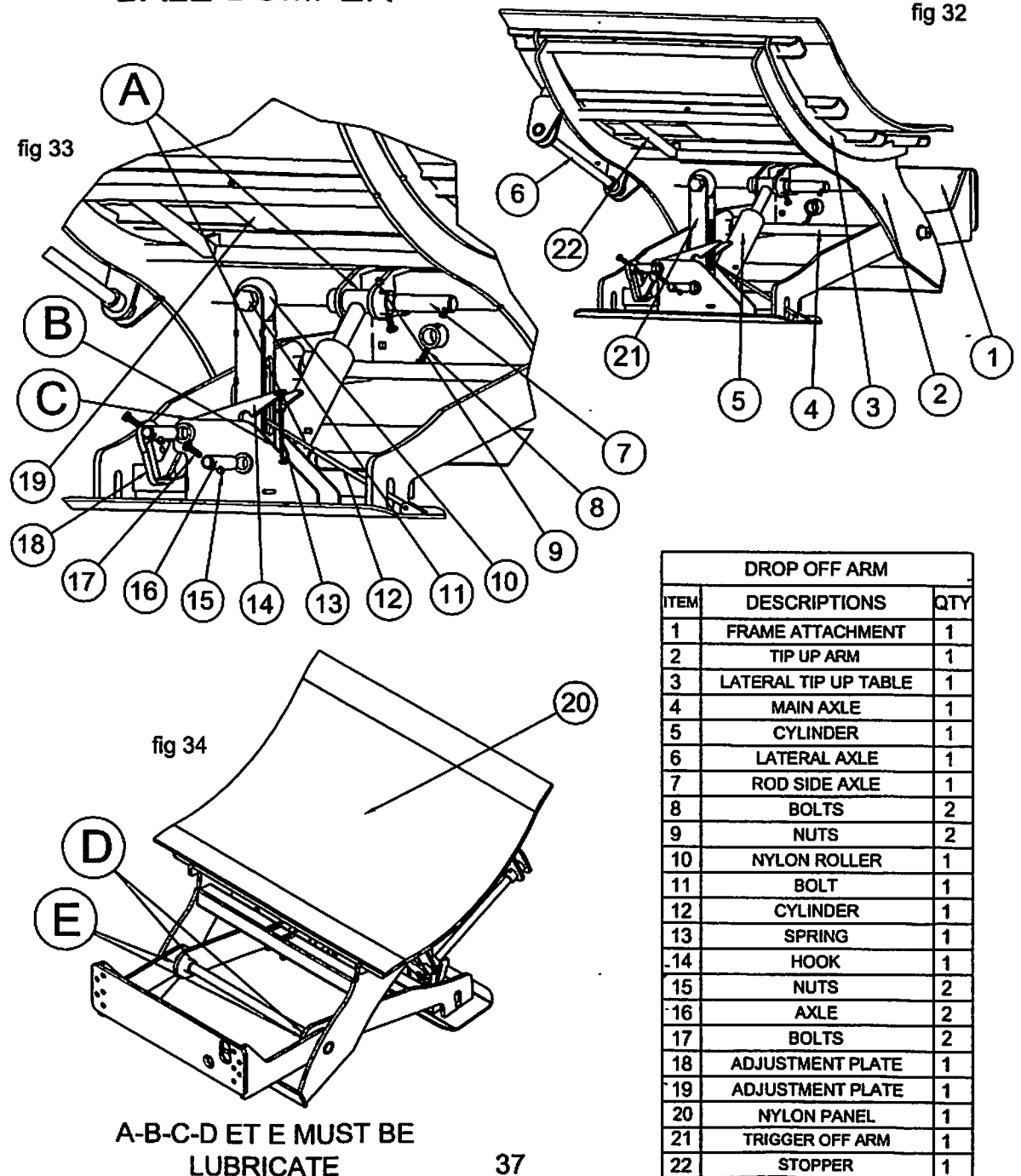
ROTARY TABLE		
ITEM	DESCRIPTION	QTY
1	ROTARY TABLE	1
2	SUPPORT ROLLER	2
3	SPROKET	1
4	IDLER SPROKET	1
5	SPROKET	1
6	SPROKET	1
7	DRIVE ROLLER	1
8	FREE ROLLER	1
9	STRAPS	4
10	SHIELD	1

NOTE:  
FOR A 20" PLASTIC THE SPROKET  
MUST BE CHANGE.

FIG 10



**BALE DUMPER**



DROP OFF ARM		
ITEM	DESCRIPTIONS	QTY
1	FRAME ATTACHMENT	1
2	TIP UP ARM	1
3	LATERAL TIP UP TABLE	1
4	MAIN AXLE	1
5	CYLINDER	1
6	LATERAL AXLE	1
7	ROD SIDE AXLE	1
8	BOLTS	2
9	NUTS	2
10	NYLON ROLLER	1
11	BOLT	1
12	CYLINDER	1
13	SPRING	1
14	HOOK	1
15	NUTS	2
16	AXLE	2
17	BOLTS	2
18	ADJUSTMENT PLATE	1
19	ADJUSTMENT PLATE	1
20	NYLON PANEL	1
21	TRIGGER OFF ARM	1
22	STOPPER	1

# HYDRAULIC ET ÉLECTRIC SECTION

480-580 FRAME

A AND B ARE PLACE  
FOR LUBRICATION

fig 8

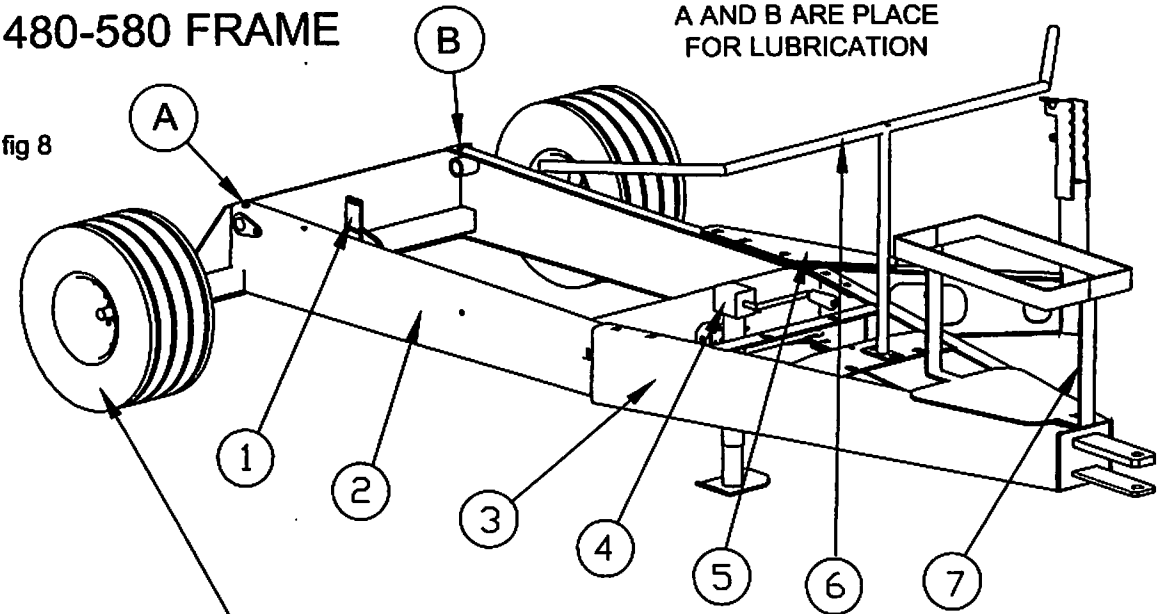
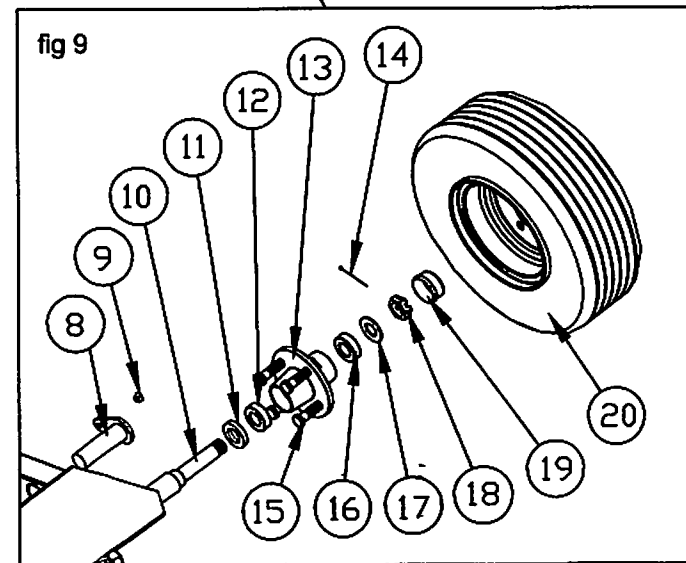


fig 9



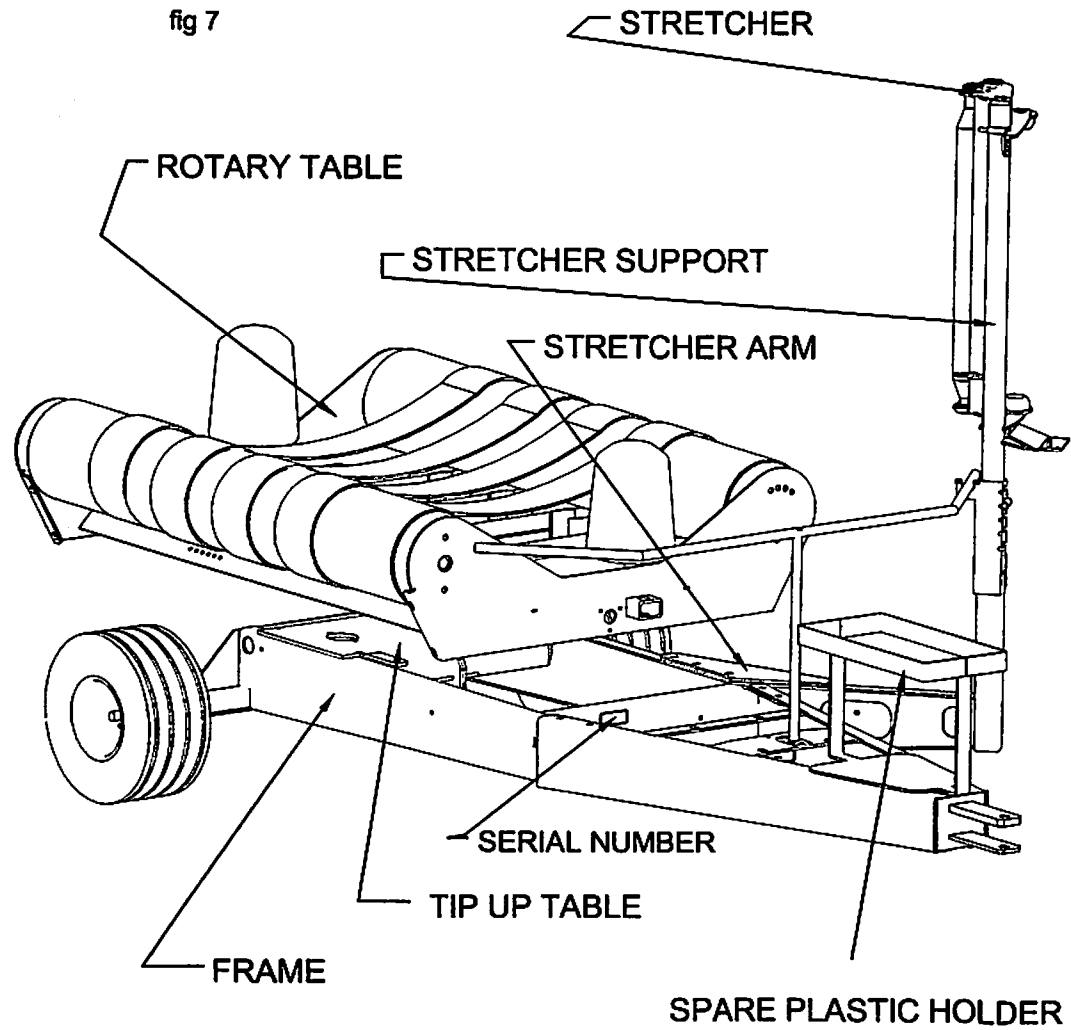
## FRAME

1	SENSOR HOLDER	1
2	FRAME	1
3	TONGUE	1
4	JACK	1
5	STRETCHER ARM	1
6	SAFETY GUARD	1
7	SPARE PLASTIC HOLDER	1
8	PIN	2
9	NUT	2
10	AXLE	2
11	OIL SEAL	2
12	BEARING	2
13	HUB	2
14	CUTTER PIN	2
15	BOLTS	8
16	BEARING	2
17	WASHER	2
18	NUT	2
19	DUST CAP	2
20	TIRE 18.5X8.5X8	2

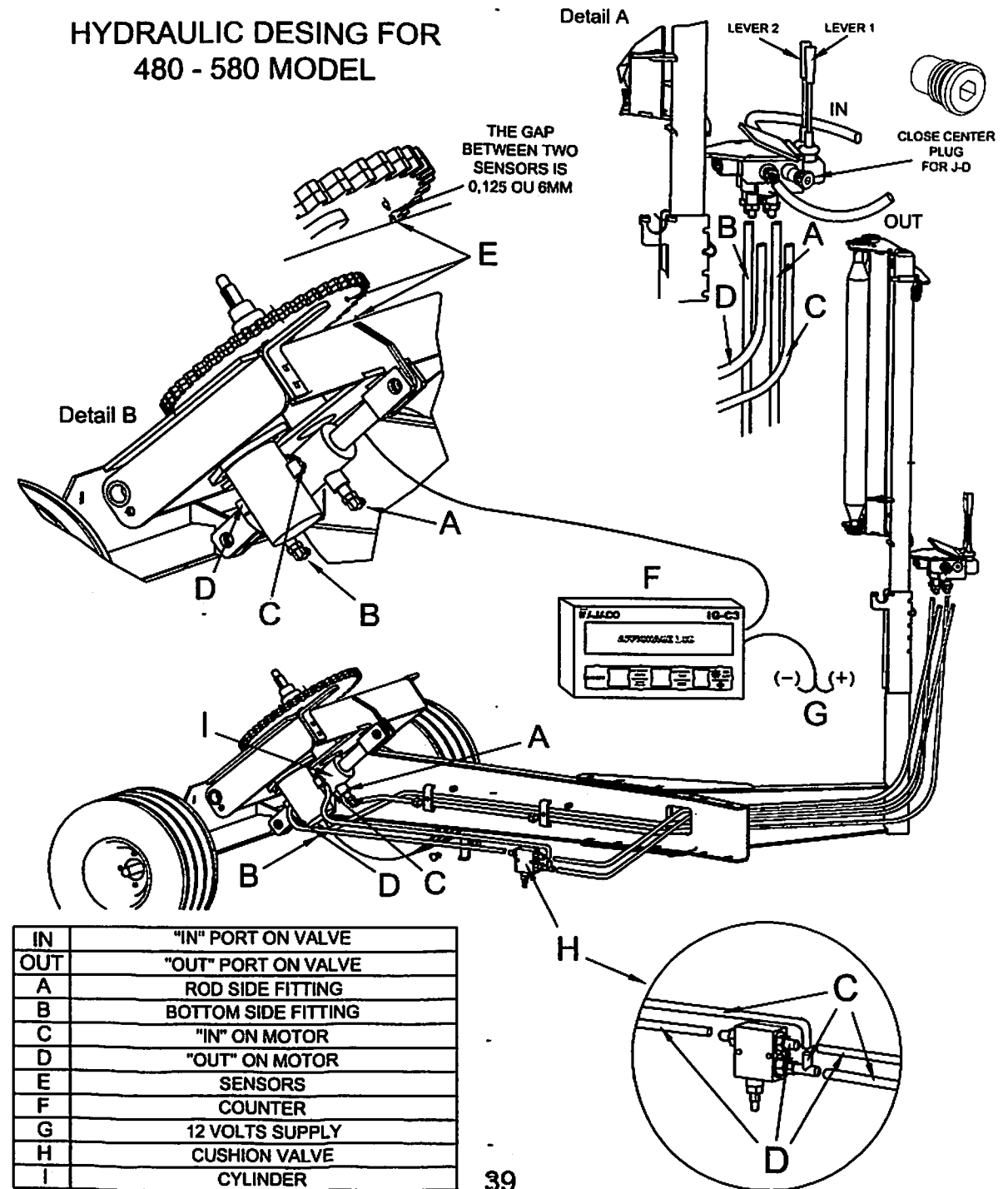


# MODEL 480

fig 7

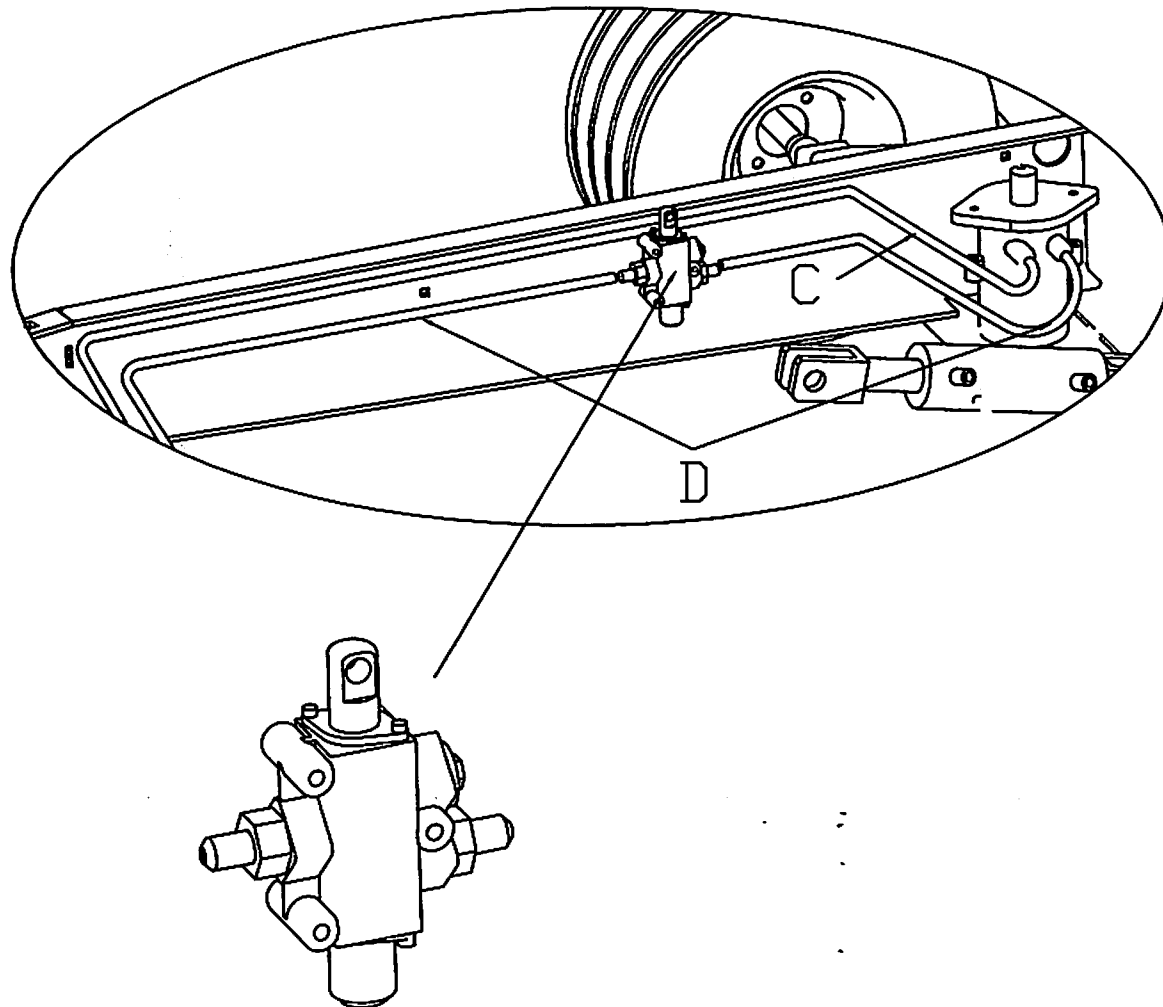


# HYDRAULIC DESING FOR 480 - 580 MODEL



**NOTE: MODEL 580 BALE WRAPPER IS  
 EQUIPPED WITH A HYDRAULIC LOCK  
 VALVE.**

**TECHNICAL SPECIFICATIONS**



**WEIGHT**

MODEL 480	710 kg	1562 lbs
MODEL 580	765 kg	1683 lbs
MODEL 680	780 kg	1716 lbs
MODEL LD	1460 kg	3212 lbs

Standard wheel size	18.5" X 8.5" X 8"
Model LD wheel size	20.5" X 10" X 10" X 10 plys
Recommended oil flow	7 gallons per minute
Rotation speed	28 revolutions per minute
Stretching device width	30 inches optional 20 inches
Plastic film layers	4 layers
Plastic film nominal stretching	65%
Control	Electro-hydraulic valves for 680-680LD Manual hydraulic valves for 480-580 Hydraulic valves controlled by cables from tractor cab (model 580LD)

**REQUIRED BALES DIMENSIONS**

Round bale diameter	122 cm @ 152 cm
Round bale length	122 cm @ 152 cm

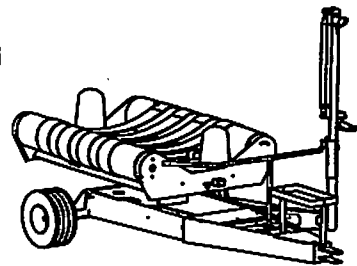
**Warning !** The wrapping of hay bales required particular cares in order to achieve an optimal haylage quality.

Set the baler to produce a high density bale with a good round shape. If necessary, reduce the bale length. The stretching of the plastic film should not exceed 65%.

Manipulation of the bale after it has been wrapped should be done with the appropriate device in order to avoid damages to the film.  
 Immediately stack up the bales after wrapping (side up).

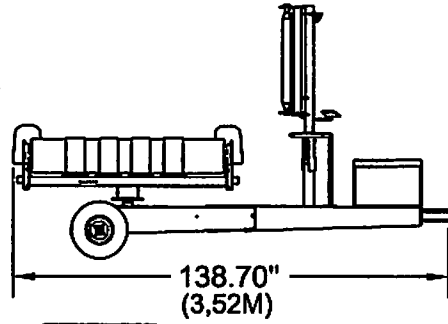
# HYDRAULIC DIAGRAM MODEL 580LD

fig 1



STANDARD  
MODEL

fig 2



(2,04M) 80.20"

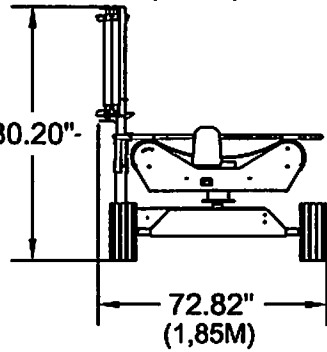
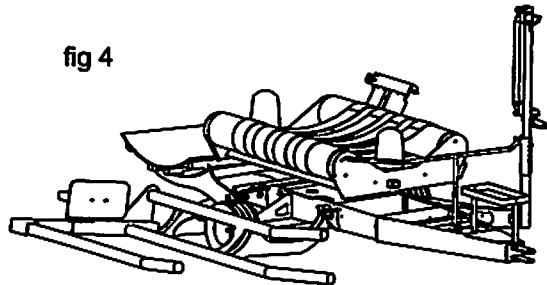


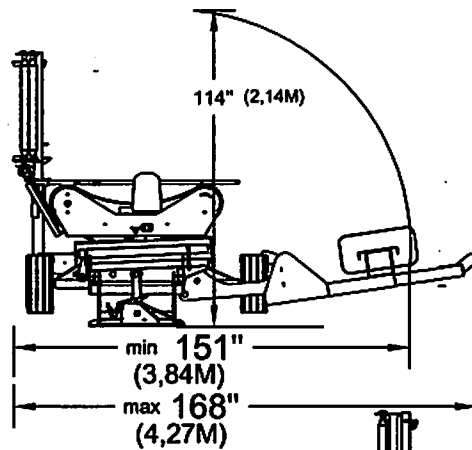
fig 3

fig 4



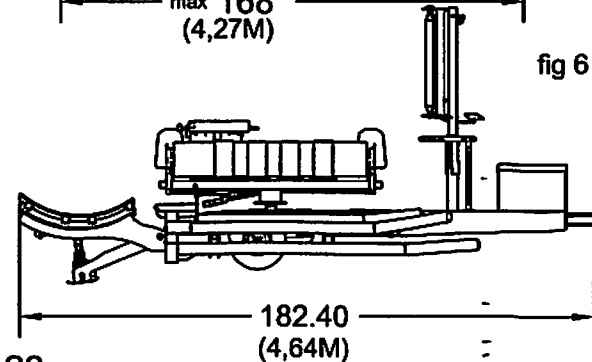
MODEL  
LD

fig 5



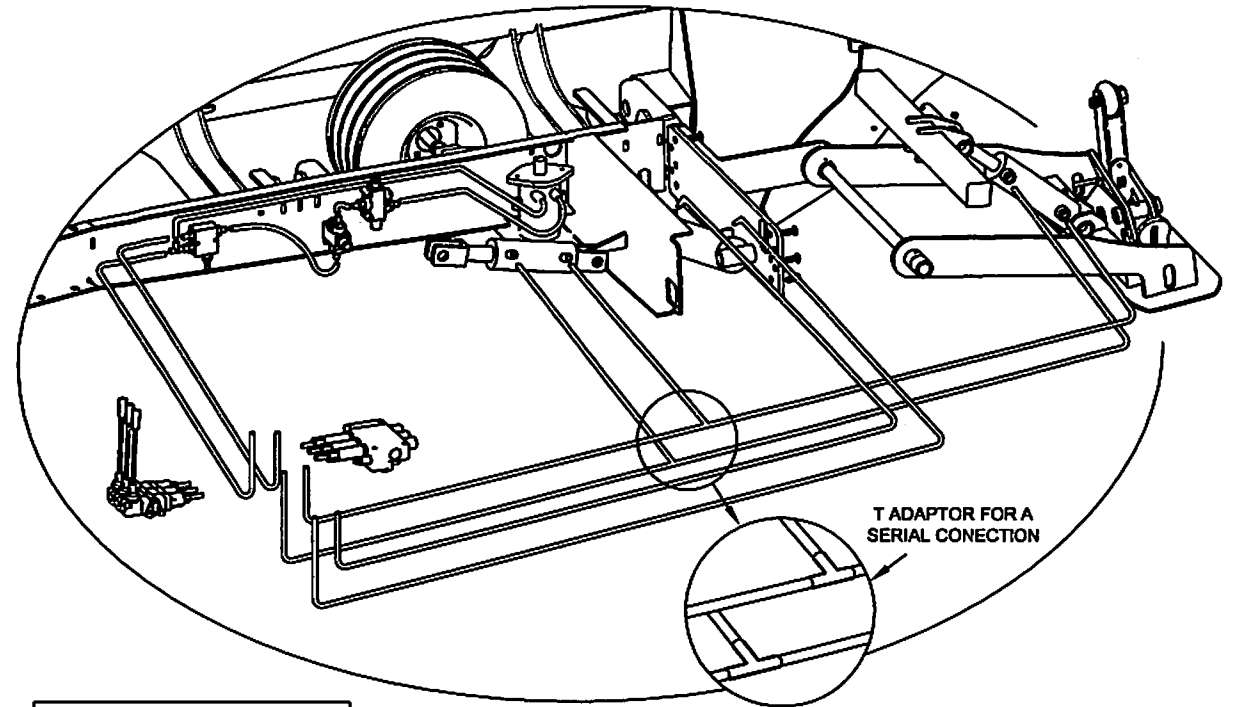
min 151"  
(3,84M)  
max 168"  
(4,27M)

fig 6

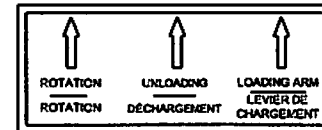


20

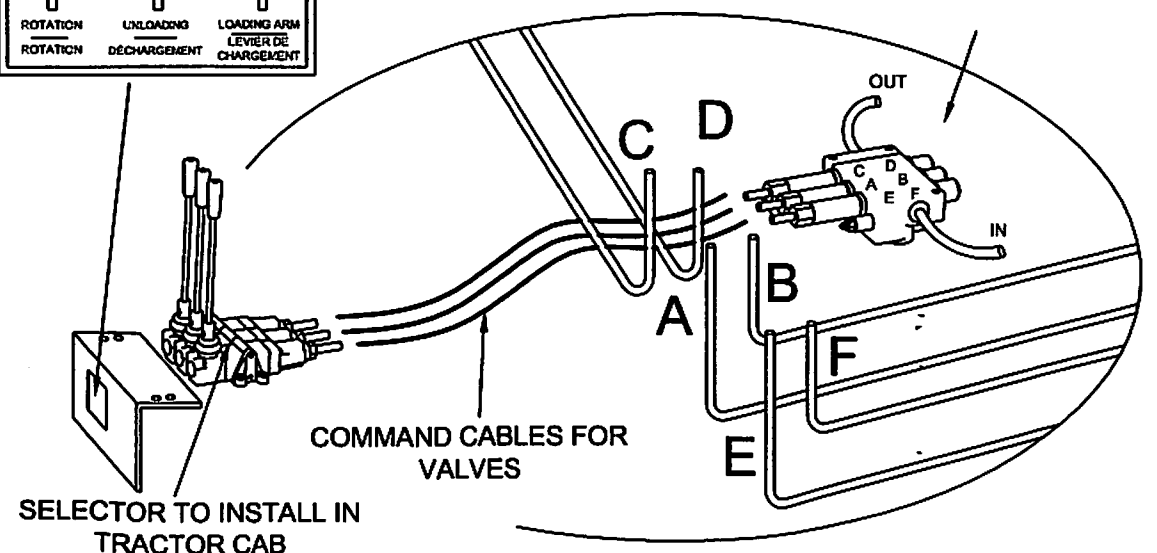
182.40  
(4,64M)



T ADAPTOR FOR A  
SERIAL CONECTION



MAIN VALVE

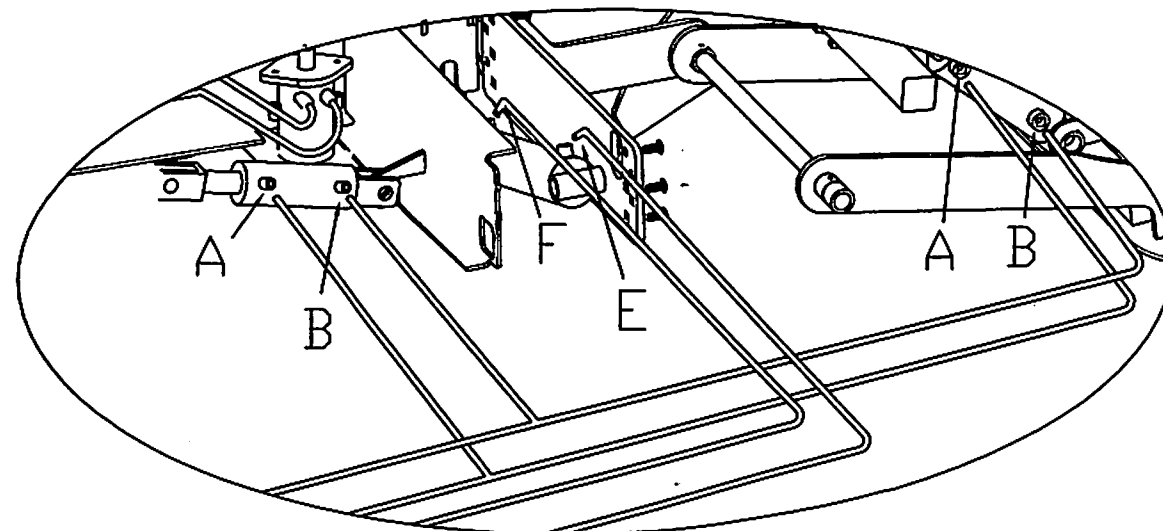
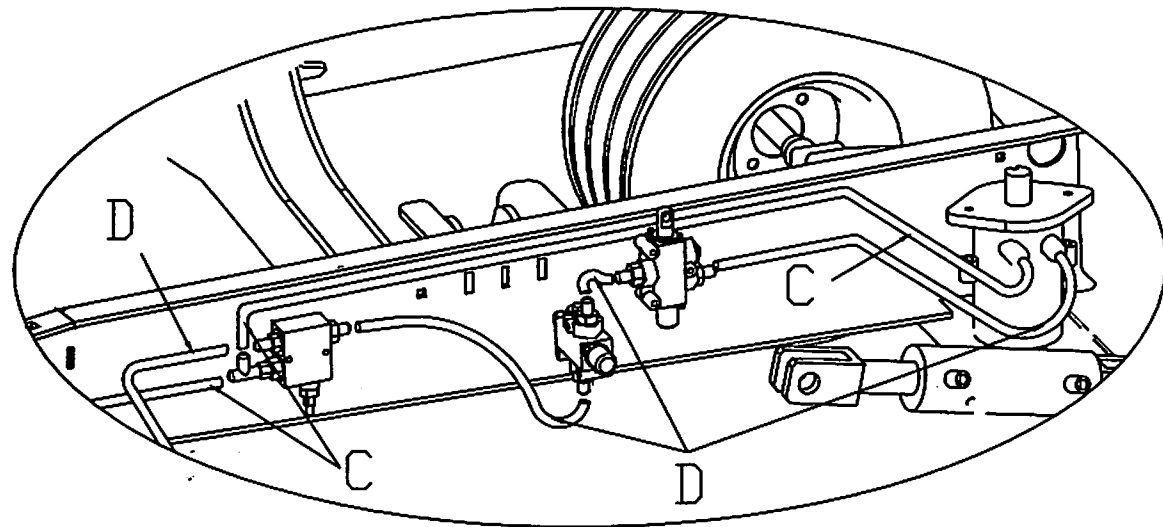


COMMAND CABLES FOR  
VALVES

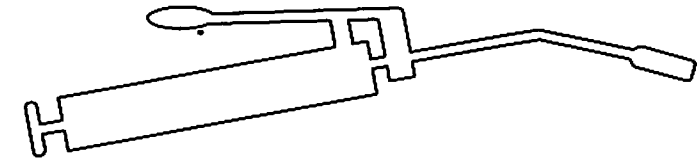
SELECTOR TO INSTALL IN  
TRACTOR CAB

41

## HYDRAULIC DETAILS; MODEL 580LD



## LUBRICATION SCHEDULE



PAGE 23.....	fig 8.....	A-B.....	50hrs
PAGE 27.....	fig 15.....	A-B.....	10hrs
PAGE 27.....	fig 16.....	C.....	10hrs
PAGE 27.....	fig 16.....	D.....	50hrs
PAGE 31.....	fig 19.....	A-B.....	10hrs
PAGE 31.....	fig 19.....	C.....	50hrs
PAGE 34.....	fig 26-27..	A-B-C-D..	10hrs
PAGE 35.....	fig 28.....	A-B.....	10hrs
PAGE 36.....	fig 31.....	F.....	10hrs
PAGE 37.....	fig 33-34..	A-B-C-D-E..	10hrs

### NOTE:

THE ROTARY TABLE GEAR SYSTEM (UNDER THE TABLE) AND TWO MITTER GEARS WHO DRIVE THE CUT AND HOLD MUST BE LUBRICATE AT EVERY 50 HRS.  
(USE A HIGH ADHESIVE GREASE.)

ATELIER  
**MAJACO** INC.

**<< D >> OPTION  
DESCRIPTION**

The << D >> option designates an unloading platform use on our 580 and 680 << D >> or << LD >> model (See P#30).

The unloading platform is design to gently pick up the bale and to lay it down on the ground on it's flat end where there is more plastic to protect the bale.

**OPERATING INSTRUCTIONS**

The unloading platform works simultaneously with the wrapper dumping table, there is no supplementary control lever to operate it.

In the operation with 680 model, all the procedure is automatic and the unloading platform come back automatically to the initial position, ready to pick up the next bale.

**SETTING INSTRUCTIONS**

In the unloading platform mechanism, there is two parts that could require some adjustments.

First item: See Fig#33 P#37 item#19

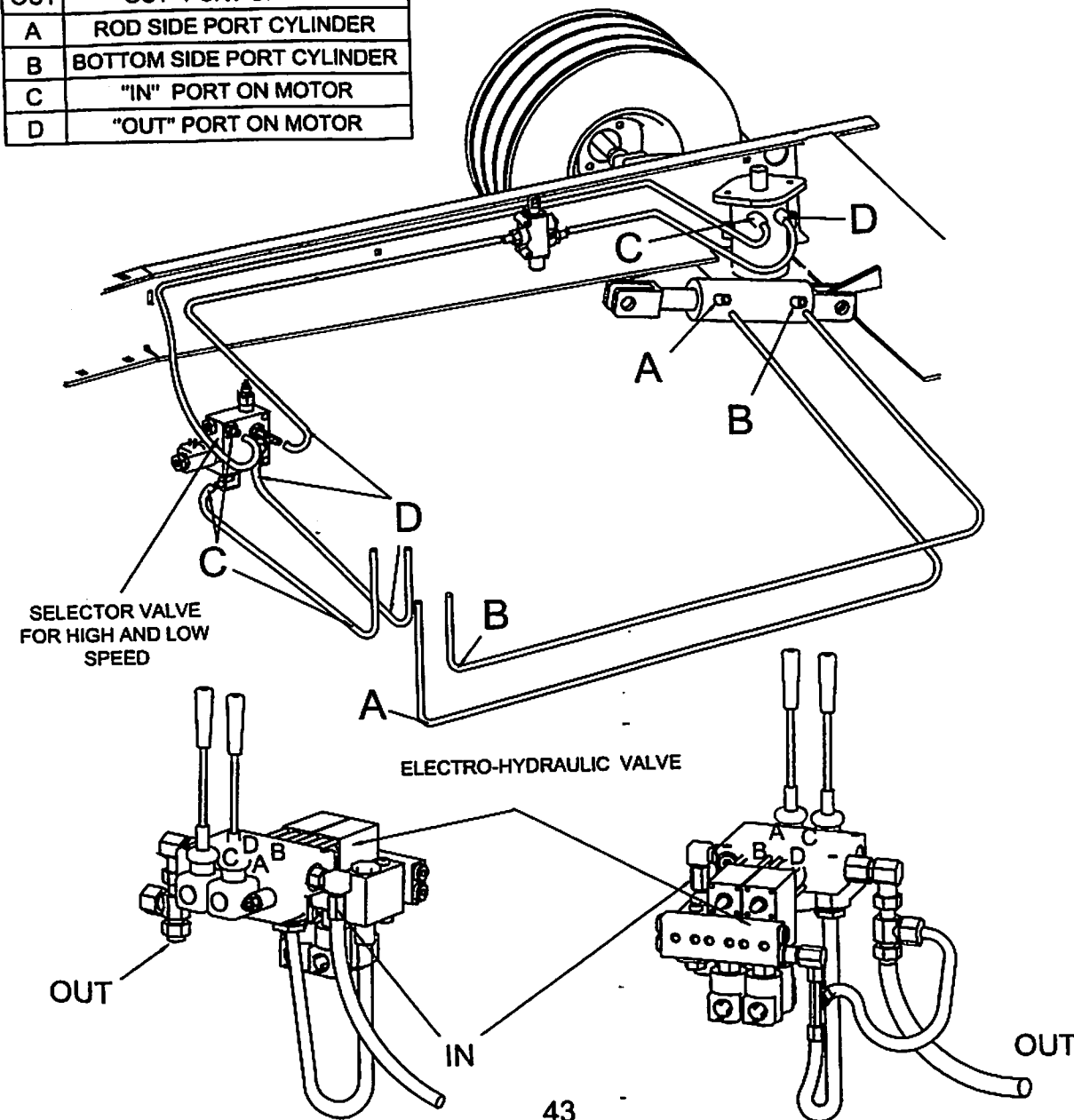
The adjustment of this plate will determine the angle of the lateral lever for the unloading platform and the position that the bale will end up on the ground. (Standing up on the flat end or roll tendency after the unloading operation).

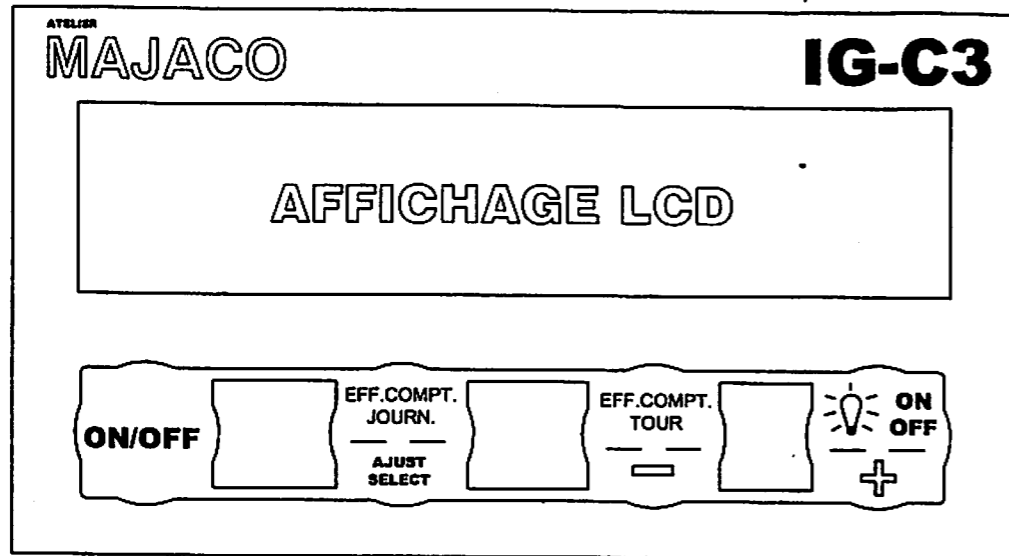
Second item: See Fig#33 P#37 item#18

Adjusting this part (item 18) will push on the retaining hook (fig#33 item#14) and will release the trigger of arm (fig#32) assembly in order to bring back the lateral tip up table to the receiving position.

**680 MODEL HYDRAULIC ASSEMBLY**

IN	"IN" PORT ON VALVE
OUT	"OUT" PORT ON VALVE
A	ROD SIDE PORT CYLINDER
B	BOTTOM SIDE PORT CYLINDER
C	"IN" PORT ON MOTOR
D	"OUT" PORT ON MOTOR





## MODEL: IG-C3 BALE COUNTER

*The loading lever is equipped with an arm that orient the bale correctly before the pick up.*

*A unit with the << L >> option, must have the electronic counter display and cables command located in the tractor cabin.*

*Manipulate the loading lever with caution in order to gently lay down the bale on the table.*

*When the wrapping procedure is completed and the bale unloaded, rotate the table 90 degrees counterclockwise to receive the next bale.*

*The 580, 680, L & LD model are build with an adjustable tow bar wich give the leveling capabilities for any tractor hitch height.*

**SAFETY FIRST:** Always allow a safety area when you operate the loading arm. (15 feet or 5 meters diameter).

*On the 680 model, loading lever is operated by a button on the electronic control module (See instructions manual on Electronic Control Module). On the 680L & 680LD model, the Electronic Control Module has to be installed in the tractor cabin to allow the operator to control all the processes directly on the ECM.*

ATELIER  
**MAJACO** INC.

**<< L >> OPTION  
LOADING LEVER**

The << L >> option designate a hydraulic loading lever for our 580 and 680 MODEL.

This loading lever can load bales directly on the rotary table without the help of another tractor.

It has been designed for multiple bale sizes (4' X 4', 4' X 5' and 5' X 5'). The length and the width are adjustable.

To insure the proper alignment of the bale on the rotary table, the lever length guides should be adjusted (fig#26 P#34) as well as the support rollers on the rotary table (fig#13 P#26).

After the bale loading is completed, you must bring the loading lever back to it's lower position (12 inches or 30 centimeters from ground level) otherwise a safety valve will not allow the rotary table to start (P#40). This safety valve is there to avoid collisions between the rotary table and the loading lever. This safety valve (fig#29 P#35 item#8) also allow you to set the maximum height that the lever will reach during the wrapping process. This will give you the possibilities to move toward a new bale while one is still in the wrapping process.

When the wrapping is completed, you can unload the bale. Always make sure that the plastic film is aligned with the jaws of the plastic film cutter. After that, load the next bale with the lever, make sure the rotary table is back to it's working position and then rotate the table by a quarter of a turn to receive the new bale.

During the transportation or for the storage of the unit, make sure that you secure the loading lever in high position with the safety lock designed for this purpose. (fig#27 P#34 item#9)

ATELIER  
**MAJACO** INC.

**BALE COUNTER  
MODEL : IG-C3**

**KEY USES :**

- |    |  |  |
|----|--|--|
| 1. | <b>&lt; ON / OFF &gt;</b>  | POWER key On / Off   |
| 2. | <b>&lt; EFF. COMPT. JOURN. &gt;<br/>&lt; AJUST. / SELECT. &gt;</b> | Erase bale counter, day<br>adjust / select key                             |
| 3. | <b>&lt; EFF. COMPT. TOUR &gt;<br/>&lt; - &gt;</b>                  | Erase turn counter / bale<br>Decrease<br>Rapid decrease<br>Confirm NO      |
| 4. | <b>&lt; BACKLIGHT ON / OFF &gt;<br/>&lt; + &gt;</b>                | Light on or close "Backlight"<br>Increase<br>Rapid increase<br>Confirm YES |
|    | <b>&lt; + &gt; AND &lt; - &gt;</b>                                 | RESET to 0   |

**MAIN MENU :**

1. To erase the bale counter / day, press key < EFF. COMPT. JOURN. >. Then, press key < + > to confirm YES, or press key < - > to cancel (confirm NO).
2. To erase the turn counter / bale, press key < EFF. COMPT. TOUR >. Then, press key < + > to confirm YES or press key < - > to cancel (confirm NO).
3. To switch on or off the "backlight" , press key < Blacklight ON / OFF >.
4. To go to menu (Modify turn number / bale), press key <AJUST / SELECT. > for 3 seconds.

**MENU : Modify turn number / bale MAX :**

1. To increase turn number / bale MAX, press key < + >, and to decrease turn number / bale MAX, press key < - >  
N.B. The minimum turn number / bale = 2  
The maximum turn number / bale = 80  
The number by default (on «MASTER RESET») = 15
2. To increase or decrease quickly, press at least for three seconds the key < + > or the key < - >
3. To go to menu (Modify bale number / day), press key < AJUST / SELECT >

**MENU : Modify bale number / day :**

1. To increase the bale number / day, press key < + >, and to decrease the bale number / day, press key < - >  
N.B. The bale number / day = 000  
The maximum bale number / day = 999  
The number by default (on «MASTER RESET») = 000
2. To increase or decrease quickly, press for at least three seconds the key < + > or the key < - >
3. To reset to zero the bale number / day, press simultaneously key < + > and < - >
4. To go to menu (Modify bale number / year), press key < AJUST / SELECT >

**MENU : Modify bale number / year :**

1. To increase the bale number / year, press key < + >, and to decrease the bale number / year, press key < - >  
N.B. The minimum bale number / year = 0000  
The maximum bale number / year = 9999  
The number by default (on «MASTER RESET») = 0000
2. To increase or decrease quickly, press for at least three seconds the key < + > or the key < - >
3. To reset to zero the bale number / year, press simultaneously key < + > and < - >
4. To go to menu (Modify display language), press key < AJUST / SELECT >

*NOTICE: When you are connecting the electronic control module, always check the polarity (+/-) in order to avoid inversion of the cables. A safety fuse of 10 amp on the positive line is protecting all the circuits. If the fuse have been damaged, use the same type and grade to replace it.*

*When the machine is not used, it is recommended to store the electronic control module in a dry place. After you have disconnected the cables, install the protective cap on the female plug of the control module in order to avoid moisture or dirt.*

*The electro-hydraulic valve of the wrapper have two mechanical levers that can be used to manually test the machine or to complete a wrapping process if a major failure had occurs in the electrical system.*



**680 MODEL  
DESCRIPTION**

*Standard equipment and characteristics of 680 MODEL are identical as the 580 except for the electronic control module. With the machine in stationary position, this module allow one operator to execute all wrapping operations ( loading, start the process, unloading ) with a remote control from the tractor's cabin. All the wrapping process is done automatically and the machine will reset itself to start another wrapping procedure.*

*The electronic control module must be connected to a 12 volts DC system. (constant supply)*

*At the beginning of each wrapping session, the electronic system must be reprogrammed to set the exact stopping position of the rotary table for the automatic bale's unloading operation.*

*The programming procedure is in the instructions manual at page #49 to 57.*

**IMPORTANT:** *You must read the Electronic Control System instructions manual before using it.*

*480 and 580 model's safety features also applies to the 680 model.*

*After the machine started, all the operation cycles are controlled by three magnetic proximity sensors that are installed on the unit (P#54). One sensor is used for the start / stop procedure and also as a counter for table rotations (P#54). The two other sensors are used to indicate the LOW / HIGH position of the unloading system (P#54 #2 & #3). Those sensors have been factory installed and tested but it might be possible that they need adjustments after shipping. We make sure that around the HIGH / LOW sensors enough space is available to make any adjustments. Note that the approximative gap between the sensors and the magnet is 0,125 inch or 3 millimeters.*

**MENU : Modify display language :**

1. To modify the display language, press key < + > or key < - >, to choose between FRANÇAIS and ENGLISH.
2. To return to the main menu, press key < AJUST / SELECT >

**OTHER FUNCTIONS :**

1. To start or stop the device, press key < ON / OFF >  
  
N.B. The data are saved each time the user shuts off the device.  
The data reappear when the user starts the device.
2. To get the zero reset (MASTER RESET) for all data, press simultaneously keys < + > and < - > at the start of the device while the display shows « Power ON BIOS V1.1 ».
3. When both sides of the [[sensor]] are aligned,
  - The turn number / bales increases automatically by 1
4. When the turn number / bale reaches the turn number / bale MAX-1
  - The device emits a beep and the display flashes.
5. When the turn number / bale reaches the turn number / bale MAX,
  - The device emits two BEEPS and the display flashes.
  - The bale number counter / day increases by 1.
  - The bale number counter / year increases also by 1
- 5a. At that moment, a 15-second count will take place; after the delay, the turn counter / bale will get down automatically to zero.

If another turn is detected by the sensor, the turn number / bale will surpass the turn number / bale MAX. For each turn, the device will emit three BEEPS and the display will flash. The count will also be made for each turn / bale over the turn number / bale MAX. The count will also be made if the user presses a key on the keyboard of the device.

**INTERNAL BATTERY ELECTRICAL SUPPLY :**

1. **Shutting off the automatic "backlight" :**
  - 1a. The "backlight" will shut off automatically 20 seconds after the last use.
  - 1b. The "backlight" will go back on again when both sides of the [[sensor]] are aligned or when the user presses a key.

2. Low consumption mode (Sleep mode) :

- 2a. The device will move into a sleep mode five minutes after the last use.
- 2b. The device will reactivate when both sides of the sensor are aligned or when the user presses the < ON / OFF > key.

ELECTRICAL SUPPLY FROM AN EXTERNAL SOURCE AC – DC :

1. Shutting off the automatic "backlight"

- 1a. The Backlight will shut off automatically 60 seconds after the last use.
- 1b. The Backlight will reactivate when both sides of the sensor are aligned or when the user presses a key.

2. Charging the internal battery :

- 2a. Each time the device is connected to an external AC – DC source, the internal battery charge control will start normally until full charge is attained.
- 2b. Even if the user shuts off the device, the internal battery charge control will be made normally until full charge is attained.

Scheduled lubrication of all the indicated points on the machine is mandatory to maintain a high level of efficiency (See fig#19 P#31 for cut and hold lubrication)

*A safety valve located in the frame structure of the machine has been installed to prevent the rotation of the table during the unloading operation. When the table come back to it's normal work position, the valve is deactivated. An adjustment of this valve could be necessary if the table refuse to operate after the unloading process (See fig#10 P#24 item#15).*

*IMPORTANT: Pay attention at the cleanliness of the plastic cut and hold. Cumulating debris like dust, hay or strings can lead to malfunction of the device.*

*SAFETY FIRST: Never start the wrapping process when there is people or animals around the machine or the power unit. Always keep the working area clear.*

*Be careful when adjusting or servicing the automatic plastic film cut and hold because this equipment have cutting and movable parts that are working with a spring loaded mechanism. Always deactivate the device prior servicing it.*

*The unit must always be attached on the tractor main tow bar in order to be at level as much as possible. NEVER ATTACH THE UNIT TO THE TRACTOR'S HYDRAULIC TOW BAR.*

*Every others parts of this machine have been adjusted at the factory. For more details on our equipment, please consult your local Majaco authorized dealer.*

ATELIER  
**MAJACO** INC.

**580 MODEL  
DESCRIPTION**

*Standard equipment and characteristics of 580 MODEL are identical as the 480 except for the automatic cut and hold. This device can hold and cut the plastic film while the machine is unloading the bale. This way, you do not have to hook manually the plastic to the bale and you are ready to restart the process immediately.*

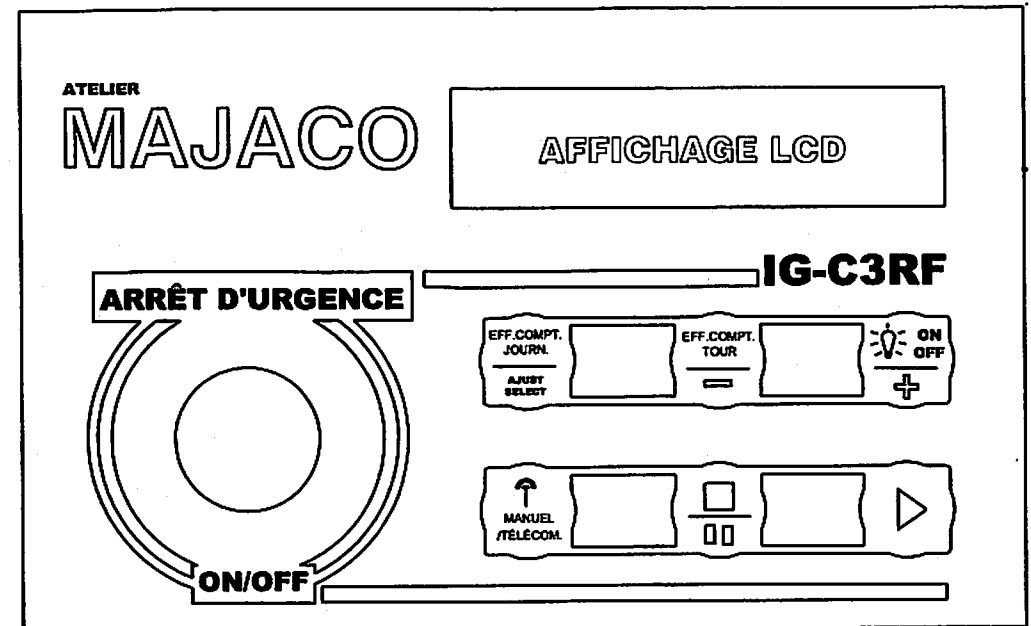
**OPERATION**

*It is important to stop the rotary table at the right place prior to do the cutting and unloading operations. The plastic film must be in line with the jaws of the plastic cut and hold to operate properly.*

*The rotation speed can be controlled manually, during the last rotation, the operator can reduce rotation speed gradually and stop it easily at the right place. Always make sure that the rotary table is stopped at the right position before unloading, wrong position of the bale during the unloading operation can damage some parts.*

*The plastic cutter jaw is release mechanically with a lever located on the machine side (fig#18 P#30 item#4). An adjustable cam (fig#18 P#30 item#1) at the lever end allow you to delay or to accelerate the release. If the plastic film being not properly cut, check the condition of the blade underneath the protective guard (see fig#20 P#32 item#15)*

*The cutter arm return spring tension is also adjustable (see fig#21 P#32 item#23-24-25)*



**ÉLECTRONIC IG-C3RF  
CONTROL**

### MANUAL MODE (COUNTER DISPLAY ONLY)

#### Changing the language on IG-C3RF:

This setting will allow you to change the IG-C3RF display's language.

1. Press and hold <ADJUST.SELECT.> button until you hear the two "beep", then release it.
2. Press three times on <ADJUST.SELECT.> button.
3. The following menu will then appears: <07/07/2000 V1.2A FRANCAIS (+/-)>
4. Press <+> or <-> to change the language (English and french available)
5. To exit this menu, press <ADJUST.SELECT.> button several times until the display indicates <Rotations: 00 Max: 17 Bales( ): 000 >.

#### Emergency button (On / Off):

The red mushroom type button is an emergency stop for automatic bale wrapping mode and is also the On/Off power switch for the control display.

- Turn it clockwise to turn on the display.
- Push it to shut off the display or for emergency stop.

#### Reset counter (daily):

This button is used to erase the actual number of bale wrapped during the day.

1. Press <EFF.COMPT.JOURN.>.
2. The following message will appears < Confirm EFF NO(-) YES(+)>.
3. Press <+> to reset and <-> to cancel.

#### Adjusting the bale counter (daily):

This setting will allow you to erase or to modify the quantity of bales wrapped during the day or to start with another quantity.

1. Press and hold <ADJUST.SELECT.> button until you hear the two "beep", then release it.
2. Press one time on <ADJUST.SELECT.> button.
3. The following menu will then appears: <Modify daily bales #:000>
4. Press <+> or <-> to change the quantity displayed or simultaneously on the two buttons to reset the counter at zero. Holding the buttons <+> or <-> will accelerate the ...
5. To exit this menu, press <ADJUST.SELECT.> button several times until the display indicates < Rotations: 00 Max: 17 Bales( ): 000 >.

### HOW TO OPERATE

The MODEL 480 operate with the hydraulic pump of a tractor or as an option, can be equipped with their own hydraulic power unit. The recommended oil flow is six gallons per minutes @ 2000PSI.

Notes: When the unit is used whit a John Deere tractor #50 serie or older (closed circuit), an adaptor must be installed on the distributing valve (this adaptor is supplied as a standard equipment) see P#39.

This does not apply to the 6000 & up serie with "load sensing" closed circuit. See installation procedures.

Wrapping operation is done manually using two levers located on the distributing valve P#39 . The first lever control the table rotation and the second lever is used to unload the bale (table must rotate counter clockwise during wrapping)

**IMPORTANT NOTICE:** Always make sure that the working area around the unit is clear before starting wrapping operations.

Seventeen complete rotations are required to cover the bale with four layers of thirty inches plastic film, with twenty inches plastic film, twenty four complete rotations will be necessary. (This is for 48" to 52" bale diameter more rotations can be required for larger bale)

The rotation speed can be controlled manually, during the last rotation the operator can reduce rotation speed gradually and stop it easily at the right position.

An electronic rotation counter is part of the 480 MODEL standard equipment (P#39 item#F). Power source is provided by one rechargeable lithium battery (charger included) or by the tractor battery using the cable provided with the unit (P#39 item#G).

For instructions on the counter display, see the operating manual P#44 to 48.

**480 MODEL  
DESCRIPTION**

*The 480 model is a trailer type individual bale wrapper. Standard equipments includes an aluminum stretcher device that use thirty inches plastic film roll (fig#17 P#29). As an option twenty inches plastic film roll can also be used by adding an adaptor on the roll support (fig#17 P#29) and by changing two gears in the transmission (fig#11 P#25 item#5). Rotation speed have to be changed to use twenty inches plastic film roll.*

*Important notice: It is important in order to obtain the recommended stretching that you insert properly the plastic film through the stretching device, a sticker (decal) on the machine is showing clearly the procedure (fig#17 P#29 item#1).*

*A practical holder for two additional plastic film rolls have been fitted out at the front of the unit in order to always have spare rolls available. It is also a good idea to keep them in theirs packaging to protect them (fig#7 P#22). Two rollers and four straps mounted on the rotary table provide the bale rotation. One of the roller is adjustable to fit different bale size (fig#14 P#26).*

*There is also two adjustable support (one at each end) that are maintaining the bale well centered. Use the lock pins underneath the rotary table to set the support (fig#13 P#26). An improper set up can move the bale out of the rotation center and may eject the bale off the rotary table. This could end up with damages to the machinery or injuries to the operator. Unloading procedure should always be done on the same side (non driven roller side). This procedure will avoid possibilities of damages to the plastic film and reduce haylage conservation quality.*

**Adjusting the bale counter (yearly):**

This setting will allow you to erase or to modify the quantity of bales wrapped during the year or to start with any other quantity.

1. Press and hold <ADJUST.SELECT.> button until you hear the two "beep", then release it.
2. Press two times on <ADJUST.SELECT.> button.
3. The following menu will then appears: <Modify yearly bales # :0000>
4. Press <+> or <-> to change the quantity displayed or simultaneously on the two buttons to reset the counter at zero. Holding the buttons <+> or <-> will accelerate the process.
5. To exit the menu, press <ADJUST.SELECT.> button several times until the display indicates < Rotations: 00 Max: 17 Bales( ): 000 >.

**Reset the wrapping rotation counter:**

This button is used to reset the actual rotations number.

1. Press <EFF.COMPT.JOURN.>.
2. The following message will appears < Confirm EFF NO(-) YES(+)>.
3. Press <+> to reset and <-> to cancel.

**Counter display lighting (LCD):**

The button  will turn on or off the lighting of the counter display.

Note: Turning on or off the lighting, will set permanently the next utilisations.  
WARNING: If you are operating the bale wrapper with batteries and no recharging system, the display will use ten times less energy if the lighting is turned off.

**Modifying maximum rotations per bale:**

This setting will allow you to wrap bales with more or less rotations.

Note: The maximum rotations adjustment is seventeen (Manufacturer's setting: seventeen).

1. Press and hold <ADJUST.SELECT.> button until you hear the two "beep", then release it.
2. The following menu will then appears: <Enter number of rotations MAX: 17>.
3. Press <+> or <-> to set the maximum rotations
4. To exit this menu, press <ADJUST.SELECT.> button several times until the display indicates < Rotations: 00 Max: 17 Bales( ): 000 >.


**AUTOMATIC MODE (COUNTER DISPLAY AND WRAPPING)**

**UNIT SERIAL NUMBER**

**Setting the stop position prior to unload:**

This setting allow you to adjust the final stop position (rotation) prior to unload the wrapped bale and to perform an accurate cut of the plastic film. Adjusting the stop position is necessary because hydraulic pressure flow may tend to vary with engine rpm.


Note: Always do the testing with an average weight bale, without plastic film. After testing, operate the MAJACO wrapper at the same rpm than the one used in testing.

1. Press and hold <ADJUST.SELECT.> button until you hear the two "beep", then release it.
2. Press four times on <ADJUST.SELECT.> button.
3. The following menu will then appears: <STOP Delay 300ms (-) (+) / test>.
4. Press <+> or <-> to set the stop delay and press  for testing.
5. To exit this menu, press <ADJUST.SELECT.> button several times until the display indicates < Rotations: 00 Max: 17 Bales( ): 000 >.
6. You can now run the plastic film through the automatic cutter.

**Wrapping operations with remote control (programming):**

Note: Programmation of the remote control is necessary when more than one MAJACO wrapper equipped with IG-C3RF are operating in the same area.

These instructions enable you to change the program of the IG-C3RF.

1. Press and hold <ADJUST.SELECT.> button until you hear the two "beep", then release it.
2. Press five times on <ADJUST.SELECT.> button.
3. The following menu will then appears: <PROGRAM remote control>.
4. Press one of the two remote control buttons, a beep will confirm that the control unit had recorded the remote control number and the following message will appears on the control display < Remote control detected >.
5. To exit this menu, press <ADJUST.SELECT.> button several times until the display indicates < Rotations: 00 Max: 17 Bales( ): 000 >.
6. Press < MANUAL / REMOTE  > to activate the remote control.

*There is a identification plate on the machine with the serial number  
(See illustration fig#7 P#22)*

*In order to have the best possible after sale service, we recommend  
that you keep your Majaco wrapper serial number available. This will  
help your local Majaco dealer to order the proper replacement parts or  
to answer any questions on our products.*

*For any other characteristics concerning this machine and to consult  
the lubrication table, see instructions manual P#19.*

**EXEMPLE OF PARTS COMMAND**

Serial number : \_\_\_\_\_

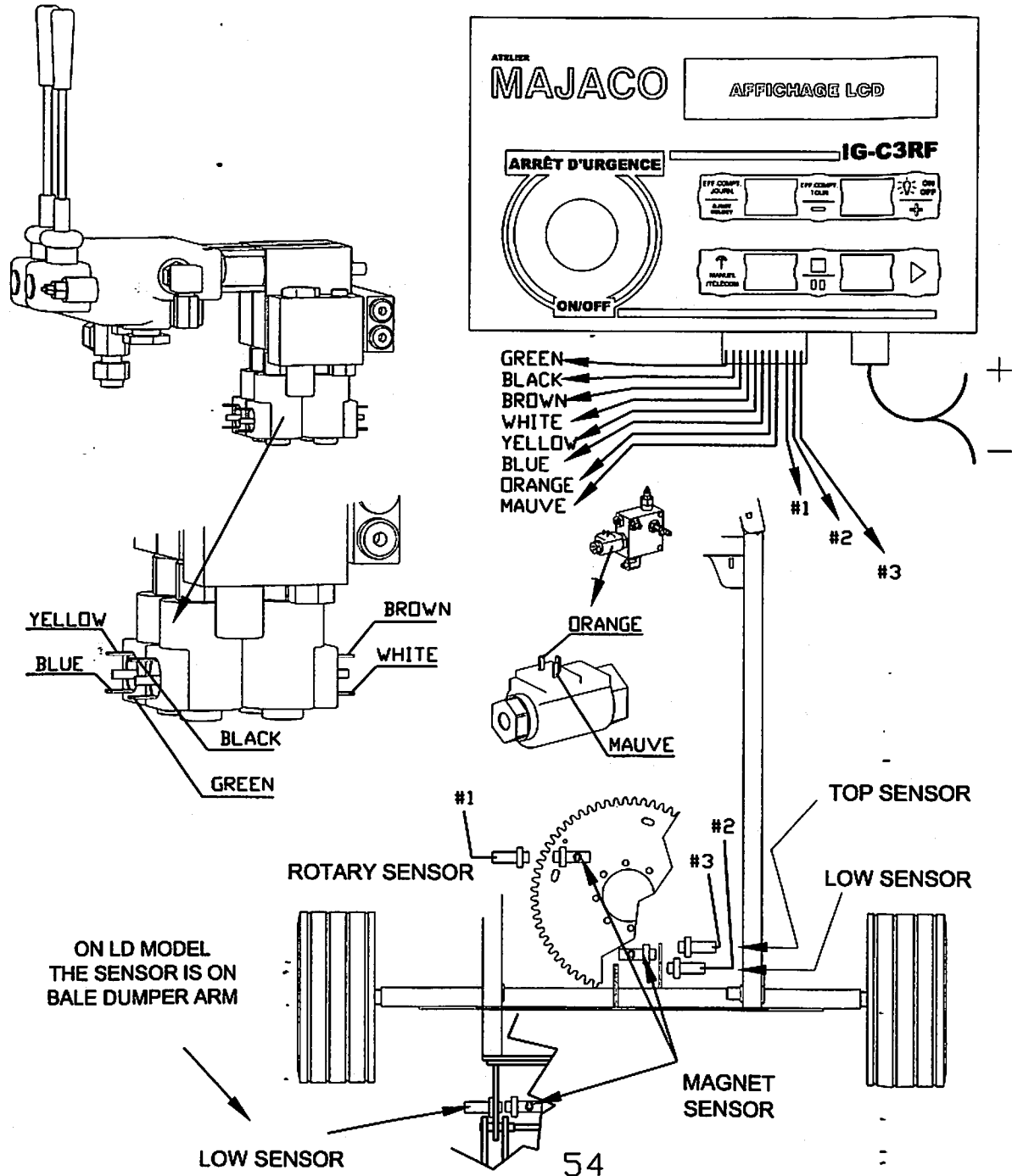
Model : \_\_\_\_\_

Page : \_\_\_\_\_ (owner's manual)

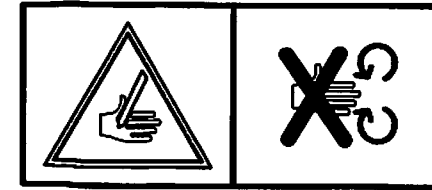
Figure : \_\_\_\_\_

Quantity : \_\_\_\_\_

# 680-680LD ÉLECTRIC DIAGRAM

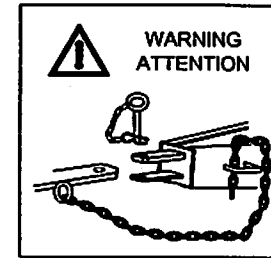


#7



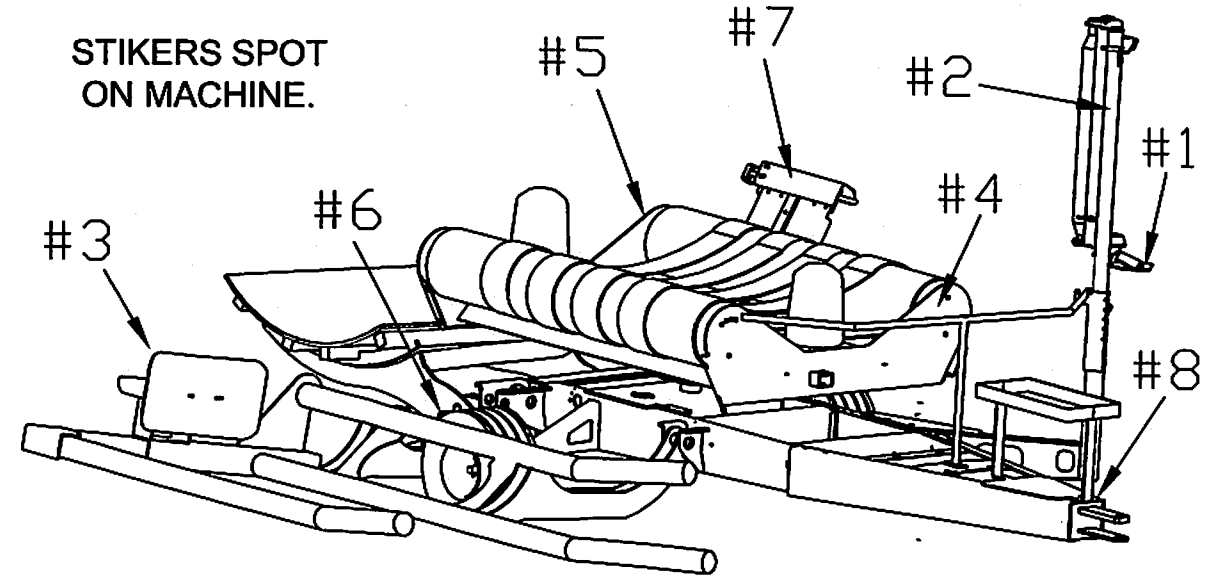
RISK OF FINGERS INJURY. KEEP HANDS AWAY FROM THE CUTTING SYSTEM AT ANY TIME; SOME PARTS ARE ON TENSION.

#8



THE SECURITY CHAIN MUST BE SOLIDLY FIXED TO ATTACH POINTS OF THE TOWED MACHINE AND THE TOWING MACHINES. THE AXLE ATTACH MUST BE LOCKED WITH A HITCH PIN.

STIKERS SPOT ON MACHINE.



**Brand new machine: Be careful !**

*Read your instructions manual. Be particularly careful when you operate for the first time a brand new machine. A non appropriate usage of the unit may result in bad performances or expensive repairs.*

*The MAJACO warranty does not cover any damages caused by a non respect of the instructions manual.*

*Verify the assembly quality and check if the unit have not been damaged in the shipping. Verify if the electrical wiring is long enough and free to follow the movable parts of the machine.*

**Stretcher rollers:**

*Important: The rollers that are stretching the plastic film must be free of dust, hays or glue of any kind. This situation could lead to an improper stretching or create perforations in the film that will over time deteriorate the quality of the haylage. Use denatured alcohol or paint thinner to clean the roller surface whenever it is necessary.*


**Magnetics sensors setting:**

This section first explain how to verify or replace faulty magnetic sensors, and secondly test if the control display receive signal from unloading system position and rotations counter.


1. Press and hold <ADJUST.SELECT.> button until you hear the two "beep", then release it.
2. Press six times on <ADJUST.SELECT.> button.
3. The following menu will then appears: <Capteur Hau.OFF Tou.OFF Bas OFF.>.
4. Use hydraulic system manual commands to test the sensors.
5. To exit this menu, press <ADJUST.SELECT.> button several times until the display indicates <Rotations: 00 Max: 17 Bales( ): 000 >.

**Automatic wrapping:**

Prior to begin wrapping operations, the IG-C3RF must be aligned.

1. Load a bale on the MAJACO Wrapper.
2. Press and hold  button until you hear one "beep" then release the button.
3. A warning sound will then tell you to back off.
4. The wrapper will do up to three rotations to adjust itself.
5. If there is no error code, the MAJACO wrapper is ready to operate in automatic mode.



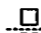
**Operating in automatic mode:**

1. Load a bale on the Majaco wrapper.
2. Press on button  or the green button of the remote control.
3. A warning sound will then tell you to back off.
4. The wrapper will adjust correctly the plastic film and then do the wrapping.
5. While the wrapper in unloading, the plastic film will be cut automatically.
6. You are now ready to start wrapping another bale.


Proceed to unit alignment:

Note: When you are using the remote control and message < Telecommande desactivee > appears on the control display,

press on <MANUAL / TELECOM  > to reactivate.

While you are wrapping, at any times, you can stop the process by pressing the button  and restart it by pressing  or cancel it by pressing a second time the  button.

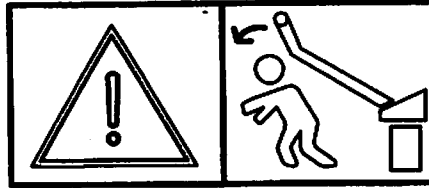
The green button of the remote control have the same function than the  button.

The red button of the remote control have the same function than the  button.



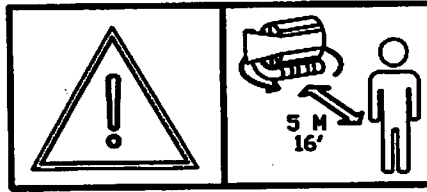
IG-C3RF Error messages

#3



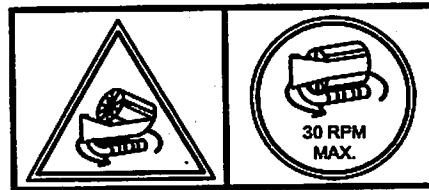
KEEP EVERYBODY AWAY FROM THE LEVER. IT CAN MOVE WITHOUT WARNING.

#4



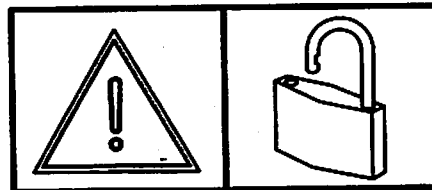
DON'T LET ANYBODY NEAR THE MACHINE WHEN IT IS IN OPERATION; THE SAFETY ZONE IS 5 METERS (16FEET)

#5



THE BALE CAN FALL FROM THE MACHINE. DO NOT RUN FASTER THAN THE MAXIMUM ROTATION SPEED OF 30 RPM; BALES WRONGLY SHAPED OR A TOO HIGH SPEED ROTATION INCREASE CONSIDERABLY THE RISKS.

#6



BE SURE THAT ALL PARTS ARE LOCKED WHEN MOVING THE MACHINE FROM ONE PLACE TO ANOTHER.

“Proceed to unit alignment”:

The alignment of the wrapper must be done (See section “Automatic wrapping”)

“Remote control deactivated”:

Press on <MANUAL / TELECOM  > to reactivate

Note: If the  button is pushed, the remote control is automatically deactivated.

“Error code 101”:

Slow rotation time limit have gone beyond.

- The rotation counter sensor is not working properly.
- The hydraulic system is not working properly.
- Hydraulic pressure too low.

Note: Press on <+> to erase error message.

“Error code 102”:

Fast rotation time limit have gone beyond.

- The rotation counter sensor is not working properly.
- The hydraulic system is not working properly.
- Hydraulic pressure too low.

Note: Press on <+> to erase error message

“Error code 103”:

The sensor that gives the signal of the end of up travel for the unloading table is not detected or faulty.

- The hydraulic system of the unloading table is not working properly.
- Hydraulic pressure too low.

Note: Press on <+> to erase error message

“Error code 104”:

The sensor that gives the signal of the end of down travel for the unloading table is not detected or faulty.

- The hydraulic system of the unloading table is not working properly.
- Hydraulic pressure too low.

Note: Press on <+> to erase error message.

# WARNING SYMBOLS

IMPORTANT

THE OWNER, THE USER AND THE REPAIRMAN MUST KNOW THE SECURITY INSTRUCTIONS BEFORE OPERATING, TUNING OR

REPAIRING THE MACHINE.

PAY ATTENTION AND BE SAFE.

READ AND TAKE INTO ACCOUNT THE SECURITY MEASURES

CONTAINED IN THIS MANUAL; YOU HAVE THE RESPONSABILITY FOR THE SECURITY WHEN USING THE MACHINE.

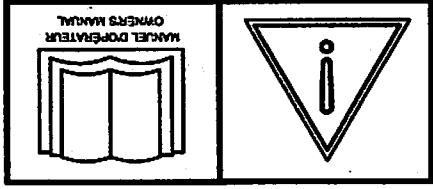
PAY A PARTICULAR ATTENTION TO THIS SYMBOLS; THEY

INDICATE THE PRECAUTIONS YOU HAVE TO TAKE TO PREVENT



ACCIDENTS.

THESE SYMBOLS ARE ON THE MACHINE AND ALSO IN THE OWNER'S MANUAL; THEY ARE THERE FOR YOUR SECURITY AND IT IS VERY IMPORTANT THAT YOU PAY ATTENTION.

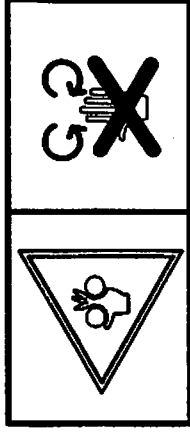


#1

READ CAREFULLY THE OWNERS MANUAL BEFORE USING THE MACHINE OR MAKING ANY ADJUSTMENT.

#2

RISK OF INJURY TO THE HANDS WHEN THEY ARE CLOSE TO THE MOVING STRETCHER.



5

ATELIER  
MAJACO INC.

"Error code 105":

Problem have been fixed, wrapper alignment must be done ( See section "Automatic wrapping").

Note: Press on <+> to erase error message.

**Channel 0 overload:**

The outlet connected to the wrapping speed reduction solenoid valve is faulty or bypassed.

Note: Press on <+> to erase error message.

**Channel 1 overload:**

The outlet connected to the wrapping solenoid valve is faulty or bypassed.

Note: Press on <+> to erase error message.

**Channel 2 overload:**

The outlet connected to the unloading table down travel solenoid valve is faulty or bypassed.

Note: Press on <+> to erase error message.

**Channel 3 overload:**

The outlet connected to the unloading table up travel solenoid valve is faulty or bypassed.

Note: Press on <+> to erase error message.

56

## INTRODUCTION

*The MAJACO wrappers are designed to wrap bales made out of hay, grass or other kinds of "haylage" using stretchable plastic film.*

*The rotary table, the table rollers and the automatic film cut and hold are operate with an hydraulic motor.*




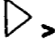
*Our machines are equipped with a thirty inches stretcher for plastic or with a twenty inches one which is available as an option. The majority of our models are equipped with an automatic cut and hold for film.*

*The MAJACO wrappers operate with the hydraulic pump of a tractor or as an option, can be equipped with their own hydraulic power unit.*

*Our standard models (Manual control) are equipped with manually controlled levers system which are fixed on the plastic stretcher post. It is also possible to use flexible cables (teleflexible).*

*Our other models (Electronic control) are equipped with a control module and electro-hydraulic valves. The manipulation and the wrapping of the bales can entirely be done automatically or manually.*

## KEYPAD DESCRIPTION OF THE IG-C3RF CONTROL.

- |  |   |
|--|---|
| 1. < EMERGENCY STOP ><br>< ON/OFF >  | Allow you to stop the wrapper in any times.<br>Push to stop and turn clockwise to start..   |
| 2. < EFF. COMPT. JOURN. >  | Reset to zero the daily bale counter.   |
| 3. < ADJUST. / SÉLECT. >   | <b>Selection and setting button.</b>  |
| 4. < EFF. COMPT. TOUR ><br>< - >   | Reset the wrapping rotation counter.<br>Decrease (in reset mode)<br>Press and hold will make the decreasing go faster.<br>Confirm no (in any counter reset mode).<br>Reset counter when press with < + >.                 |
| 5. <  ON / OFF ><br>< + > | Turn on or switch off lighting of control display.<br>Increase (in reset mode)<br>Press and hold will make the increasing go faster.<br>Confirm yes (in any counter reset mode).<br>Reset counter when press with < - > . |
| 6. < MANUEL/TÉLÉCOM  >   | Activate remote control.  |
| 7. <  >                 | <b>Stop temporarily or permanently the wrapping process.</b>  |
| 8. <  >                 | <b>Start the machine or restart the process after it have been stopped.</b>   |

## WARRANTY

ATELIER MAJACO INC. offers six month of warranty on our trailers, log loaders and one (1) full year on other machine. The warranty is only for parts and labour in which case the problem is from a manufacturing defect only, excluding any problems caused by abusive operation. It is understood, that ATELIER MAJACO INC. is the only one to determine the cause of the defect. The customer must obtain from ATELIER MAJACO INC. a written authorization before he begins any claim procedure. ATELIER MAJACO INC. will evaluate and determine the parts that have to be changed and will also determine the labour rate to change or repair the defective parts. This warranty becomes void if the machine has been modified without written authorization from ATELIER MAJACO INC.

Your satisfaction and goodwill are important to your dealer and to us. Normally any problem concerning the product will be handled by your dealer's service department. If you have a problem that has not been handled to your satisfaction, we suggest you take the following action :

Discuss your problem with a member of your dealership management. Often complaints can be quickly resolved at that level. If the problem has already been reviewed with the service manager.

If your problem has not been resolved to your satisfaction, contact the equipment manufacturer :

**ATELIER MAJACO INC.**  
5127 rue de la Plaisance  
Chesterville (Québec)  
CANADA  
G0P 1J0  
Téléphone : (819) 382-9977  
Télécopieur (fax) : (819) 382-9970

In order to assist you properly, we need the following information :

- 1- Your name, address and telephone number
- 2- Product model and serial number
- 3- Date of purchase, dealer's name & address
- 4- Nature of the problem

After reviewing all the facts involved, you will be advised of what action can be taken. Please bear in mind that your problem will likely be resolved at your dealership, using the dealer's facilities, equipment and personnel, so it is very important that your initial contact be with the dealer. For future reference, record your unit serial number and date in the spaces below. Refer to this information when ordering parts, when making technical or warranty inquiries.

Serial number : \_\_\_\_\_ Date of purchase : \_\_\_\_\_

## **SAFETY**

**Be careful when there are people or animals in the operating area.**

*Never start the wrapping process when there is people or animals around the machine or the power unit.*

*Always respect local regulations concerning minimum age for operating or driving farm machinery. This machine should be used only for what it was designed and build for.*

*Do not wear loose or large clothings that can be caught by the moving parts of the machinery. Wear an approved mask when you are working in dusty conditions.*

**Safety first !**

*Always turn off the power unit or the tractor before servicing the wrapper.*

**Lighting**

*The owner have the responsibility to install a lighting system that comply with the local regulations when he is circulating on a public road with farm machinery.*

**Replacement parts**

*Because of safety concerns, we recommends that you use only genuine replacement parts. Using any other parts will automatically cancel the warranty.*

**Maintenance and servicing**

*Always do the proper maintenance on your machine to keep it in order. Do not alterate or modify any systems or parts of the unit.*

**ATELIER  
MAJACO INC.**

**To the buyer**

*Congratulations for the purchase of the Majaco individual bale wrapper. This machine was designed and built with precision to wrap round bales of multiple dimensions. It is a trailed type model (on wheels).*

*The Majaco wrapper is activated with an independent hydraulic power unit or a tractor. The whole system is controlled by high quality valves and couplings which control wrapping operations.*

*The rotary table is powered by an hydraulic motor and a gear to gear system. The drive rollers are activated by chains and sproket.*

*The Majaco wrapper is equipped with a thirty inches plastic film stretcher that provides savings on material cost and shorten operating cycle time.*

*In order to have the best possible after sale service, we recommend that you keep your Majaco wrapper serial number available. This will help your local Majaco dealer to order the proper replacement parts.*

**ATELIER MAJACO INC.**

*Our goal is to continuously improve our products, so we reserve the right to modify the design, the materials or the specifications at any times and without any obligations from our part.*

**ATELIER  
MAJACO INC**

**WARRANTY REGISTRATION**

**IMPORTANT**

**THIS IS YOUR WARRANTY REGISTRATION. YOUR WARRANTY IS VALID ONLY IF THIS FORMULA IS COMPLETED AND RETURNED BEFORE 15 DAYS FOLLOWING DELIVERY.**

CUSTOMER NAME: \_\_\_\_\_ DATE: \_\_\_\_\_

ADDRESS: \_\_\_\_\_

CITY: \_\_\_\_\_

PROVINCE: \_\_\_\_\_ POSTAL CODE: \_\_\_\_\_

KIND OF MACHINE MODEL: \_\_\_\_\_

SERIAL#: \_\_\_\_\_

SIGNED: \_\_\_\_\_

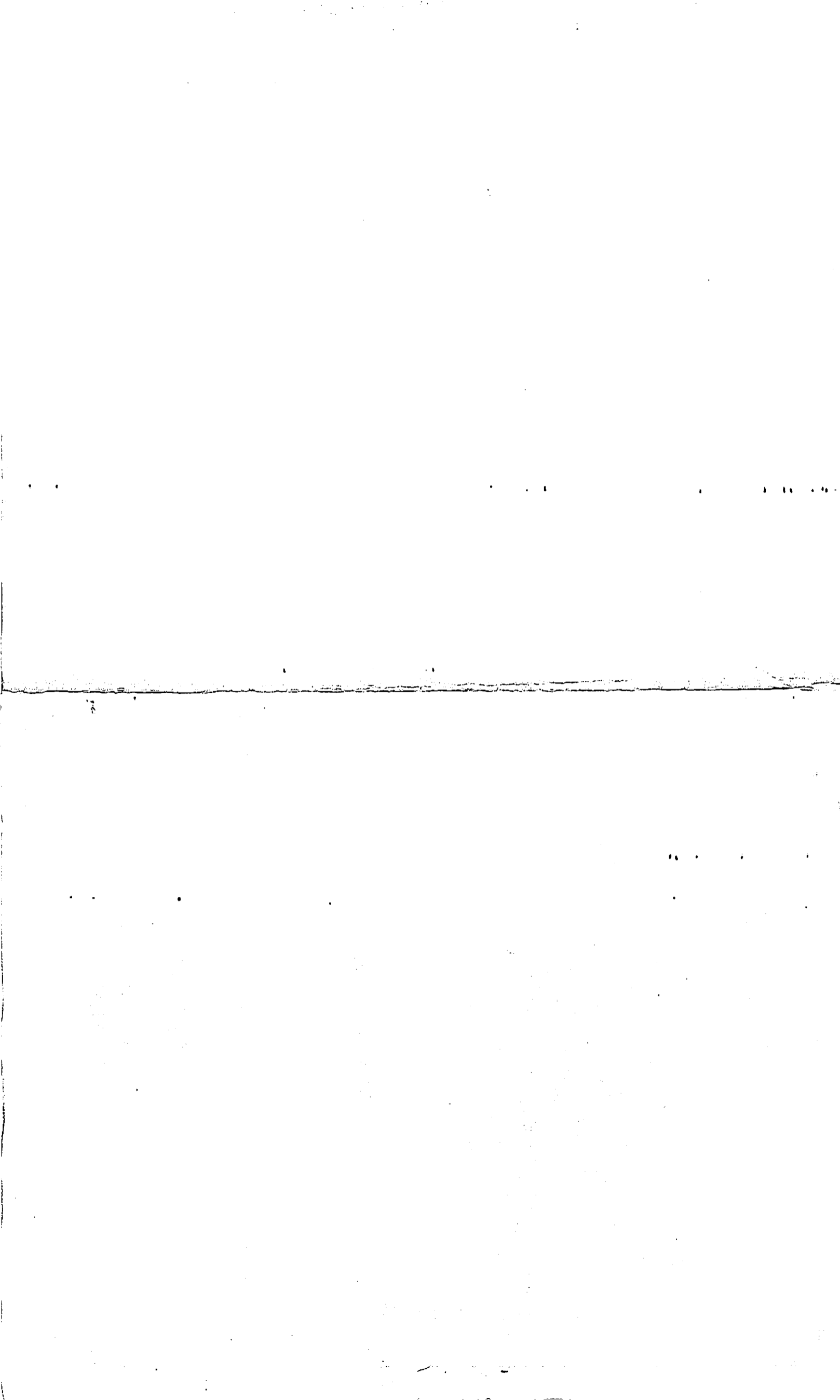
AUTHORISED DEALER: \_\_\_\_\_

**ATELIER MAJACO INC  
5127 DE LA PLAISANCE  
CHESTERVILLE  
(QUÉBEC)(CANADA)  
G0P 1J0**

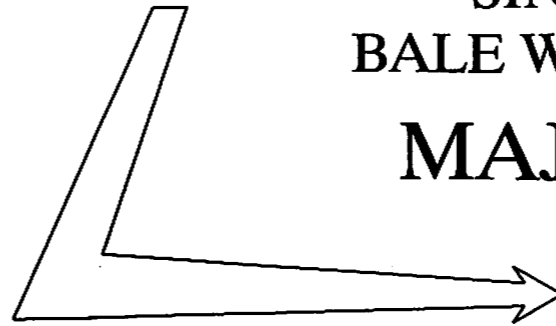
ATELIER  
**MAJACO** INC.

**SUMMARY**

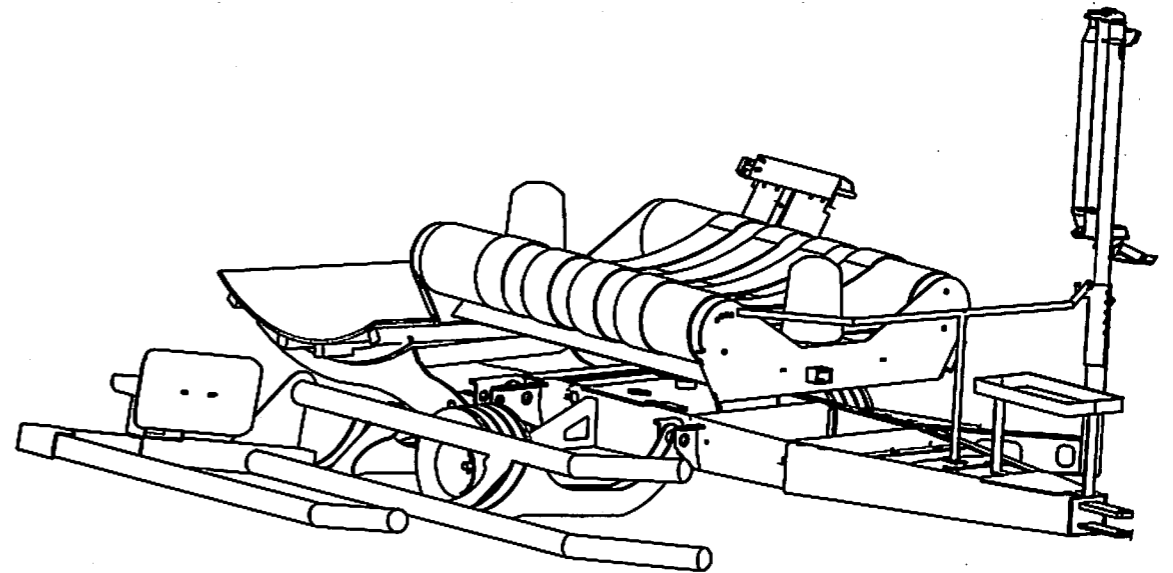
1-	Summary.....	1
2-	For the buyer.....	2
3-	Safety.....	3- 8
4-	Identification.....	9
5-	480 model description.....	10
6-	480 model operation.....	11
7-	580 model description + operation.....	12-13
8-	680 model description + operation.....	14-15
9-	« L » option.....	16-17
10-	« D » option.....	18
11-	Lubrication instructions.....	19
12-	Technical specifications.....	20-21
	<i>Illustrations</i>	
13-	480 model.....	22
14-	480-580 frame.....	23
15-	Dump table.....	24
16-	Rotary table.....	25
17-	Support rollers.....	26
18-	Transmission.....	27
19-	Transmission detail.....	28
20-	Tensionner.....	29
21-	Cut and hold.....	30-32
22-	« LD » frame.....	33
23-	Self loading arm.....	34-35
24-	Bale dumper.....	36-37
25-	480-580 hydraulic diagram.....	38-40
26-	580« LD » hydraulic assembly.....	41-42
27-	680 hydraulic assembly.....	43
28-	IG-C3 bale counter.....	44-48
29-	IG-C3RF electronic module control.....	49-57
30-	Warranty.....	58
31-	Warranty registration.....	59



SINGLE  
BALE WRAPPER  
MAJACO



OWNER'S MANUAL



MODEL 580LD

