

404655



Inline Bale wrapper

**CSST guard kit
2015-2018**

Safety devices for inline bale wrappers sold in the Province of Quebec

New Law

Since March 2009, agricultural manufacturers and distributors of inline bale wrappers have to meet new regulations emitted by the CSST according to guards and shielding for increasing safety and reducing accident hazards.

Guarding device

Anderson has designed a new hoop guard with an electrical switch « inter-connected ». In fact, the hoop guard has to be close for starting the engine and performing wrapping operation. An emergency button is also mounted close to the controls location allowing quick stop of the machine. Other guards limiting access was added on the side and at the front of the wrapper. All this safety devices must remain on the machine during wrapping.

Maintenance and transport

If the guards have to be removed for maintenance or transport, they have to be well repositioned before any wrapping operation.

The following section, presents the components and parts of the guards required by the CSST.

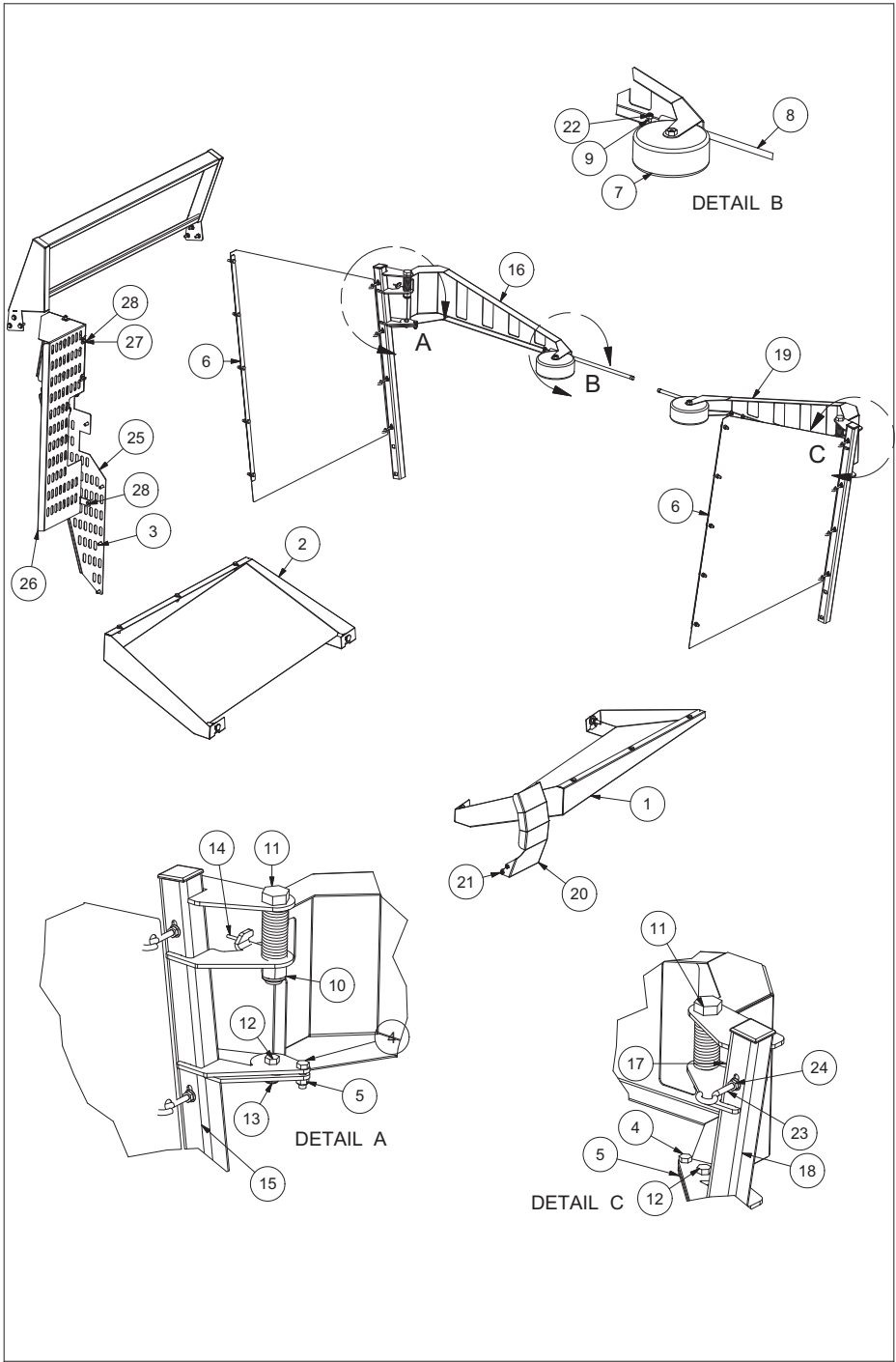
Troubleshooting

Breakdown?!?

You machine is functioning poorly or not at all?!? Before calling a technician, examine your machine and consult the table below to find a solution. If you are still not able to solve the problem yourself, ask for help from the customer service department of your agricultural dealer.

Troubleshooting table

Problems	Possible Causes	Solutions
1. Engine does not start or stop during wrapping process	The hoop guard is not closed properly	Close the hoop guard
	The hoop guard switch is not properly « inserted »	Make sure that the switch is well adjusted
	Emergency button is « turn-off»	Pull the emergency button

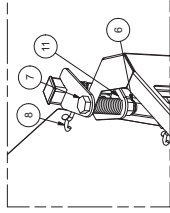


PARTS LIST				
ITEM	QTY	PART	DESCRIPTION	NOTE
1	1	210216-3	BOTTOM LEFT GUARD	
2	1	210219-3	BOTTOM RIGHT GUARD	
3	4	500600	HEX FLANGE BOLT GR5 3/8-16 X 3/4 Z	
4	24	500044	HEX BOLT GR5 5/16-18 X 1	
5	26	501031	HEX NYLON LOCKNUT GR5 5/16-18 Z	
6	2	210240	NET	
7	2	322100	CASTER	
8	2	215036	PLASTIC ROD	
9	6	500004	HEX BOLT GR5 1/4-20 X 3/4	
10	2	501036	HEX NYLON LOCKNUT GR5 3/4-10 Z	
11	2	500293	HEX BOLT GR5 3/4-10 X 4	
12	2	500084	HEX BOLT GR5 3/8-16 X 1	
13	2	501032	HEX NYLON LOCKNUT GR5 3/8-16 Z	
14	1	304008	SPRING	
15	1	210214-1	LEFT TABLE GUARD SUPPORT	
16	1	210215	TABLE LEFT GUARD	
17	1	304007	SPRING	
18	1	210218-1	RIGHT TABLE GUARD SUPPORT	
19	1	210217	TABLE RIGHT GUARD	
20	1	210213-1	DRIVING WHEEL GUARD	
21	2	500401	CARRIAGE BOLT	
22	6	501030	HEX NYLON LOCKNUT GR5 1/4-20 Z	
23	8	507105	OPEN EYE BOLT	
24	16	501020	HEX FLANGE NUT GR2 1/4-20 Z	
25	1	210421	CSST LEFT GUARD 2	
26	1	210420	CSST LEFT GUARD 1	
27	4	501905	RIVET NUT 1/4-20 X 165	
28	4	500599	HEX FLANGE BOLT GR5 1/4-20 X 3/4 Z	

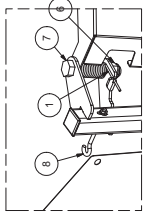
IFX 660



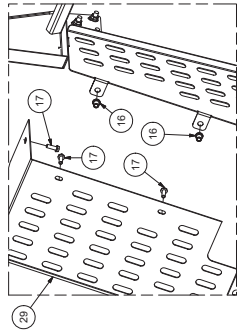
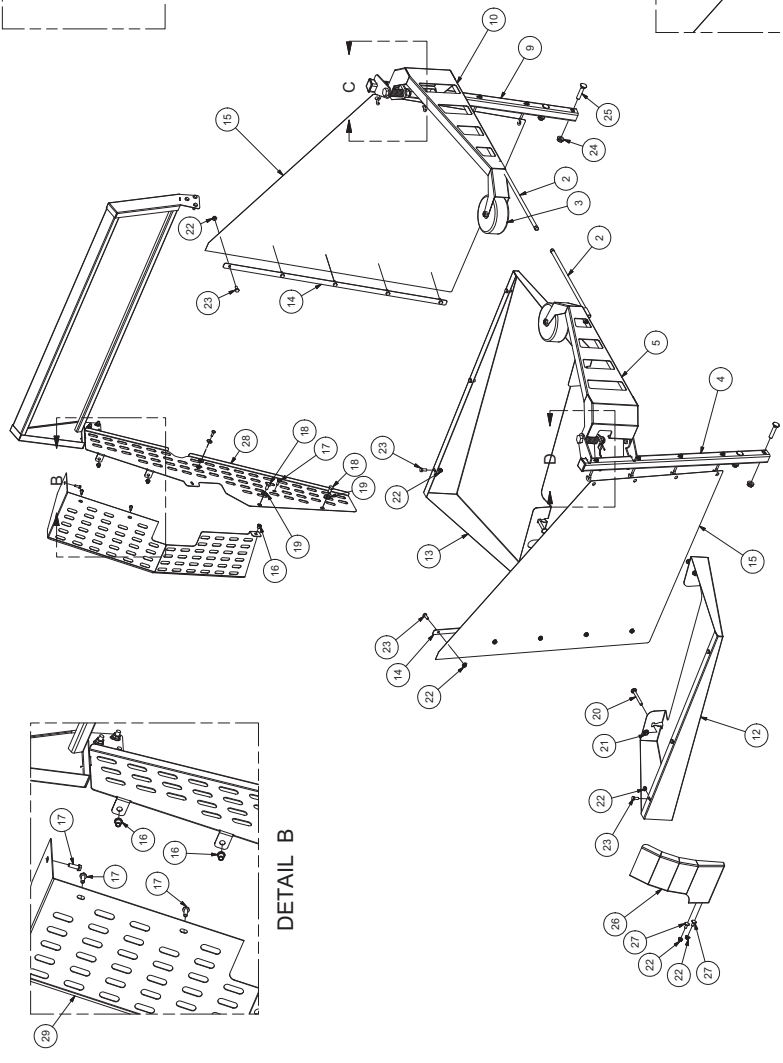
ANDERSON



DETAIL C



DETAIL D



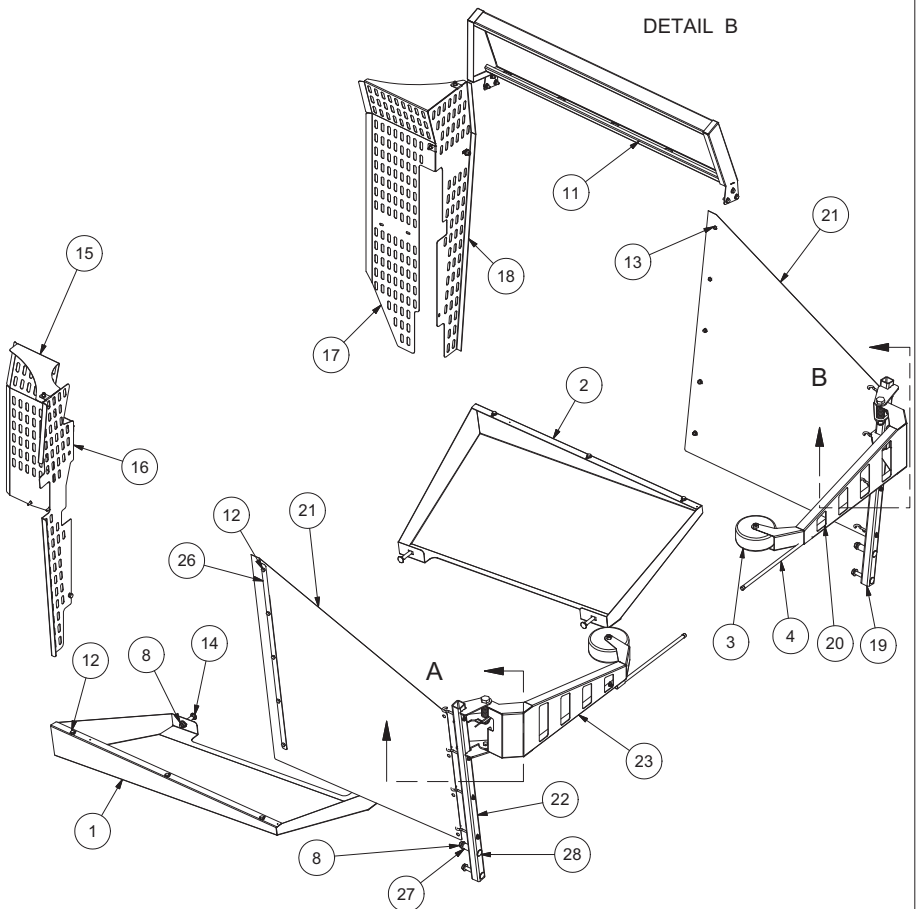
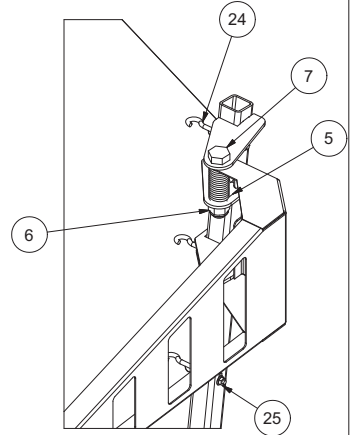
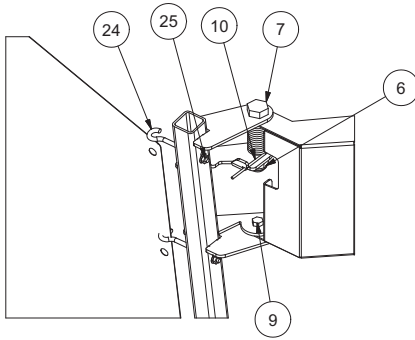
DETAIL B

IFX 660



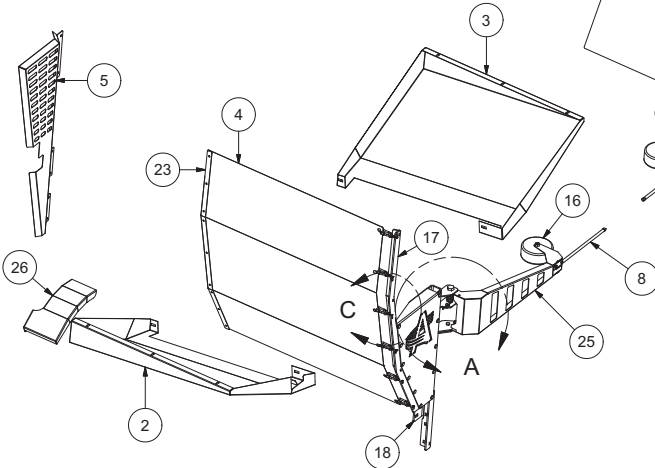
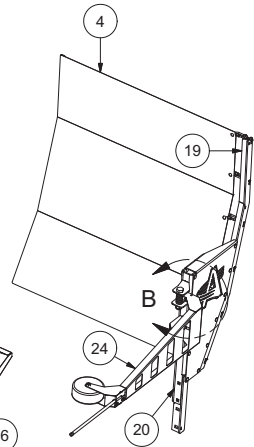
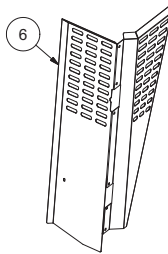
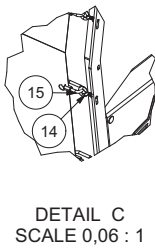
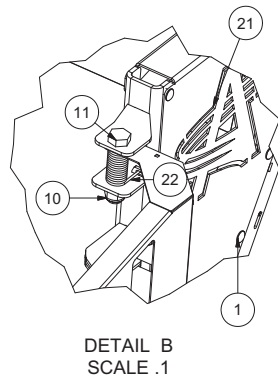
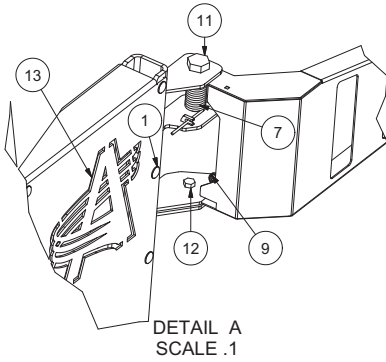
ANDERSON

ITEM	QT	PARTIÈRE	ENGLISH DESCRIPTION	DESCRIPTION FRANÇAISE	NOTE
1	1	304007	SPRING	RESSORT	
2	2	215036	PLASTIC ROD	TIGE	
3	2	322100	WHEEL	ROULETTE	
4	1	210218-1	RIGHT GUARD SUPPORT	SUPPORT DE GARDE DROIT	
5	1	210217	RIGHT GUARD	GARDE DROIT	
6	2	501036	HEX NYLON LOCKNUT GR5 3/4-10 Z	ÉCROU NYLON IND HEX GR5 3/4-10 Z	
7	2	500293	HEX BOLT GR5 3/4-10 X 4	BOULON HEX GR5 3/4-10 X 4	
8	8	507105	OPEN EYE BOLT	BOULON A OEIL OUVERT	
9	1	210214-1	LEFT GUARD SUPPORT	SUPPORT DE GARDE GAUCHE	
10	1	210215	LEFT GUARD	GARDE GAUCHE	
11	1	304008	SPRING	RESSORT	
12	1	244300	RIGHT GROUND GUARD	GARDE AU SOL DROIT	
13	1	244301	LEFT GROUND GUARD	GARDE AU SOL GAUCHE	
14	2	244302	NET SUPPORT	RETENEUR DE TOILE	
15	2	210240	NET	TOILE	
16	4	501905	RIVET NUT 1/4-20 X 165	ÉCROU À RIVET 1/4-20 X 165	
17	4	500599	HEX FLANGE BOLT GR5 1/4-20 X 3/4 Z	BOULON À EMBASE HEX GR5 1/4-20 X 3/4 Z	
18	2	500082	HEX BOLT GR5 3/8-16 X 3/4	BOULON HEX GR5 3/8-16 X 3/4	
19	2	502004	FLAT WASHER 3/8 Z	RONDELLE PLATE 3/8 Z	
20	4	500451	CARRIAGE BOLT GR5 3/8-16 X 3 1/4 Z	BOULON À CARROSSERIE GR5 3/8-16 X 3 1/4 Z	
21	4	501022	HEX FLANGE NUT GR2 3/8-16 Z	ÉCROU À EMBASE HEX GR2 3/8-16 Z	
22	24	501021	HEX FLANGE NUT GR2 5/16-18 Z	ÉCROU À EMBASE HEX GR2 5/16-18 Z	
23	22	500042	HEX BOLT GR5 5/16-18 X 3/4	BOULON HEX GR5 5/16-18 X 3/4	
24	4	501024	HEX FLANGE NUT GR2 1/2-13 Z	ÉCROU À EMBASE HEX GR2 1/2-13 Z	
25	4	500506	CARRIAGE BOLT GR5 1/2-13 X 2 1/2 Z	BOULON À CARROSSERIE GR5 1/2-13 X 2 1/2 Z	
26	1	244307	WHEEL GUARD	GARDE DE ROUE	
27	2	500401	CARRIAGE BOLT	BOULON DE CARROSSERIE	
28	1	244221	SECURITY GUARD	GARDE DE SÉCURITÉ	
29	1	244220	SECURITY GUARD	GARDE DE SÉCURITÉ	



PARTS LIST				
ITEM	QTY	PART	DESCRIPTION	NOTE
1	1	242027	BOTTOM RIGHT GUARD	
2	1	242028	BOTTOM LEFT GUARD	
3	2	322100	CASTER	
4	2	215036	PLASTIC ROD	
5	1	304008	SPRING	
6	2	501036	NYLON NUT	
7	2	500293	BOLT	
8	8	501024	FLANGE NUT	
9	3	500084	BOLT	
10	1	304007	SPRING	
11	1	242124	LEFT GUARD EXTENSION	
12	22	500042	BOLT	
13	22	501021	FLANGE NUT	
14	4	500508-1	CARRIAGE BOLT	
15	1	242142	REAR RIGHT GUARD	
16	1	242143	FRONT RIGHT GUARD	
17	1	242144	REAR LEFT GUARD	
18	1	242145	FRONT RIGHT GUARD	
19	1	210214-1	TABLE LEFT GUARD SUPPORT	
20	1	210215	TABLE LEFT GUARD	
21	2	210240	NET	
22	1	210218-1	TABLE RIGHT GUARD SUPPORT	
23	1	210217	TABLE RIGHT GUARD	
24	8	507105	OPEN EYE BOLT	
25	16	501020	FLANGE NUT	
26	2	242146	NET HOLDER	
27	2	242147	SPACER	
28	4	500509	CARRIAGE BOLT	

EVOLUTION



EVOLUTION

PARTS LIST				
ITEM	QTY	PART	DESCRIPTION	NOTE
1	22	500360	CARRIAGE BOLT	
2	1	210991	BOTTOM RIGHT GUARD	
3	1	210991-1	BOTTOM LEFT GUARD	
4	2	215044	NET	
5	1	210992	RIGHT HOOP GUARD	
6	1	210992-1	LEFT HOOP GUARD	
7	1	304007	SPRING	
8	2	215036	PLASTIC ROD	
9	2	320016	PIN	
10	2	501036	NYLON NUT	
11	2	500293	HEX BOLT GR5 3/4-10 X 4	
12	2	500084	BOLT	
13	1	210993	TABLE RIGHT SUPPORT REINFORCMENT	
14	12	507066 OU 507066	EYE BOLT	
15	12	302017	QUICK LINK	
16	2	322100	CASTER	
17	2	210994	TABLE RIGHT GUARD EXT SUPPORT	
18	1	210994-1	TABLE RIGHT GUARD INT SUPPORT	
19	1	210995	TABLE LEFT GUARD EXT SUPPORT	
20	1	210995-1	TABLE LEFT GUARD INT SUPPORT	
21	1	210993-1	TABLE LEFT SUPPORT REINFORCMENT	
22	1	304008	SPRING	
23	2	210996	NET ATTACHMENT	
24	1	210215	TABLE LEFT GUARD	
25	1	210217	TABLE RIGHT GUARD	
26	1	210213-1	DRIVING WHEEL GUARD	

