

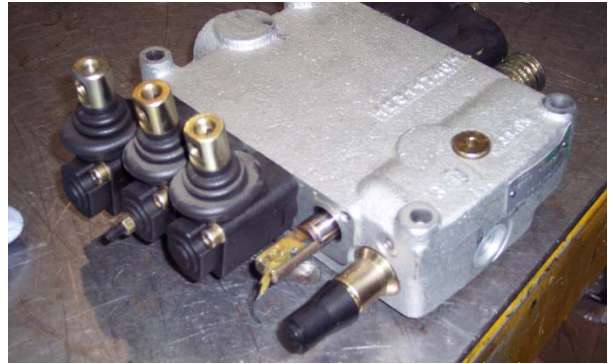
PROCEDURE REF# A-INL-027

Replace the spool of electric steering valve

1- Remove the control panel to have access to the main valve.



2- Once you have access to the main valve, remove the back of the section and the lever box of the steering valve. You will have to unscrew the lever.
N.B. It is not necessary to remove the entire bloc valve, modification can be done easily with the bloc fixed on the machine.



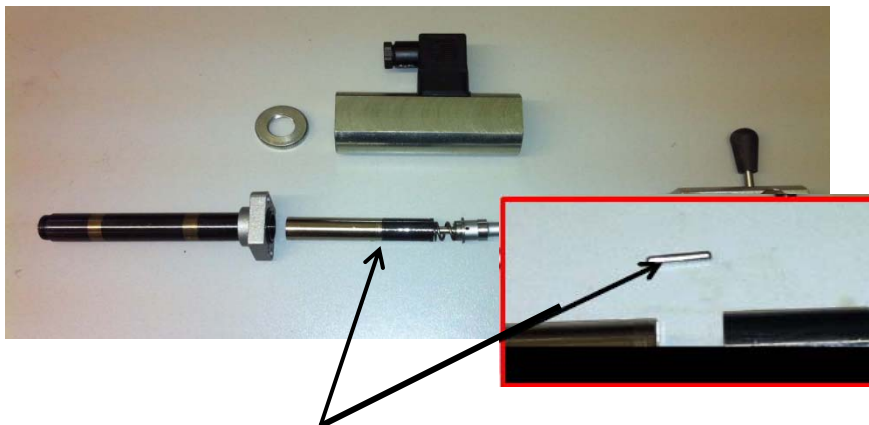
3- Remove the spool toward the back, **VERY IMPORTANT:** remove the 2 o-rings on the front and on the back. Pay attention on the assemble order.



PROCEDURE REF# A-INL-027

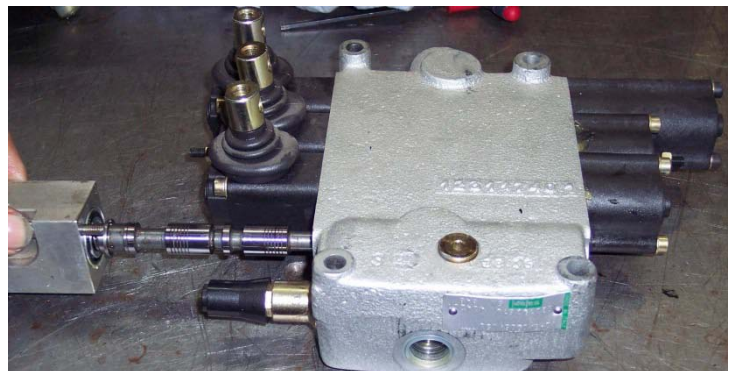
Replace the spool of electric steering valve

4- This is what the complete part looks like. Remove the nut on the back of the coil and remove the coil as well. Be careful to not lose the o-rings.



5- Remove the small pin and then remove piece by piece.

6- Reinstall the new spool by the front side of the valve (showed on the photo).



PROCEDURE REF# A-INL-027

Replace the spool of electric steering valve

7- Install the components in same order as the picture bellow. Once you are done, test the valve to make sure it works just fine. Finally, reinstall the control panel at its place.

