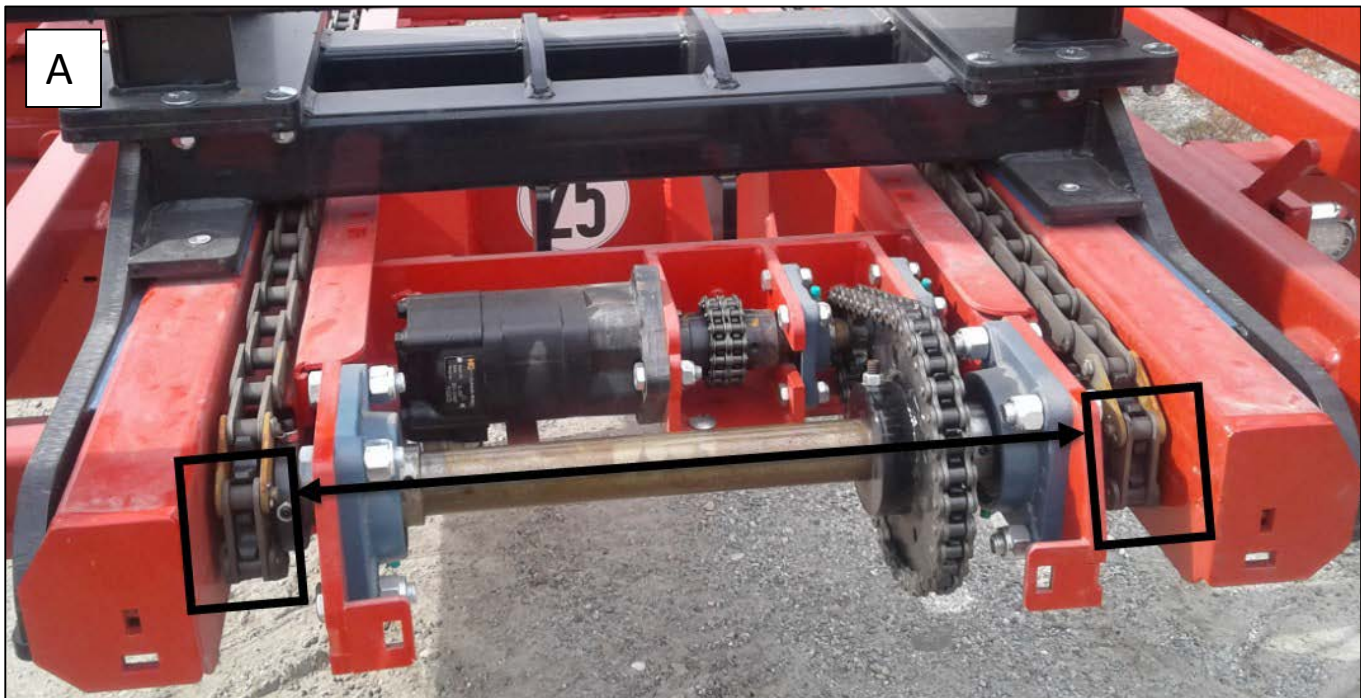


Chains tension adjustment (2021 et newer)

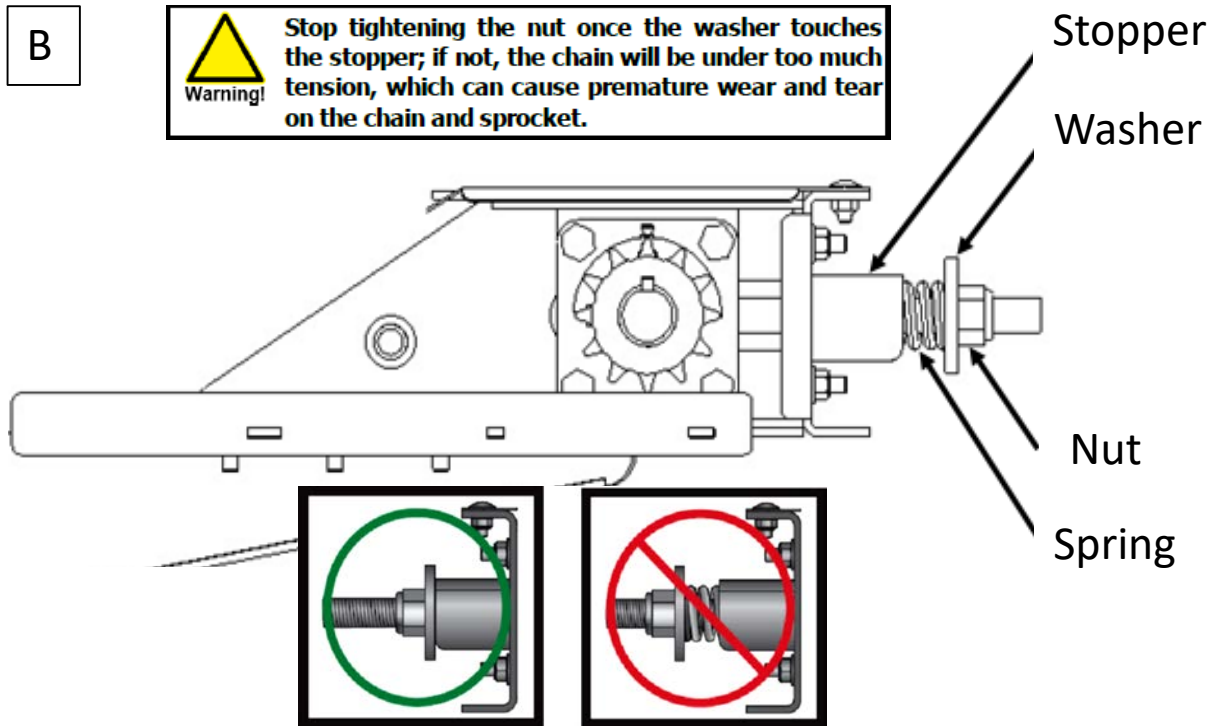
After the first 50 hours of using the trailer and every 100 hours thereafter, you will need to check the tension of the pusher chains and adjust it, if needed. Follow the next steps in order to verify and adjust the chains.

1. Remove the covers on the front and rear transmissions and clean the chains and sprockets thoroughly to remove any dirt or debris (hay, dust, mud, nets).
2. For each transmission, ensure that the two chains are synchronized. The chains are synchronized when they have the same number of links between the pusher and transmission (A), and the rollers on each chain interlock with the same teeth on the two sprockets.



Chains tension adjustment (2021 et newer)

3. Tighten the nut on each tensioner until the washer touches the stopper (B). The spring should no longer be visible (C).



Chains tension adjustment (2021 et newer)

4. Do several pushing cycles with the pusher and ensure that the washers come in contact with the stoppers when the pusher is stationary, and that the pusher does not touch the front or rear of the trailer at the end of its travel. While you are checking and adjusting the chain tension, we recommend:

- Adding grease to the tensioner sliders.
- Checking that the sprockets are aligned in the tubes.
- Ensuring that all the headless screws and all the nuts and locknuts on the two transmissions are tight..

NOTE: When the pusher is moving or touches the front or rear of the trailer at the end of its travel, the washers may come away from the stoppers slightly. The springs will remove the slack from the chains. If the pusher is stationary and does not touch the front or rear of the trailer at the end of its travel, the stoppers and washers should not have any gap in between (the springs should not be visible).

5. Adjusting the pusher transmission chain tension

After the first 50 hours of use and every 100 hours thereafter, you will need to adjust the pusher transmission chain tension.

To adjust the chain tension:

1. Loosen the four (4) bolts underneath the transmission (D).
2. Tighten the two (2) tension bolts on the side of the transmission until the correct tension is reached.
3. Tighten the four (4) bolts underneath the transmission.

