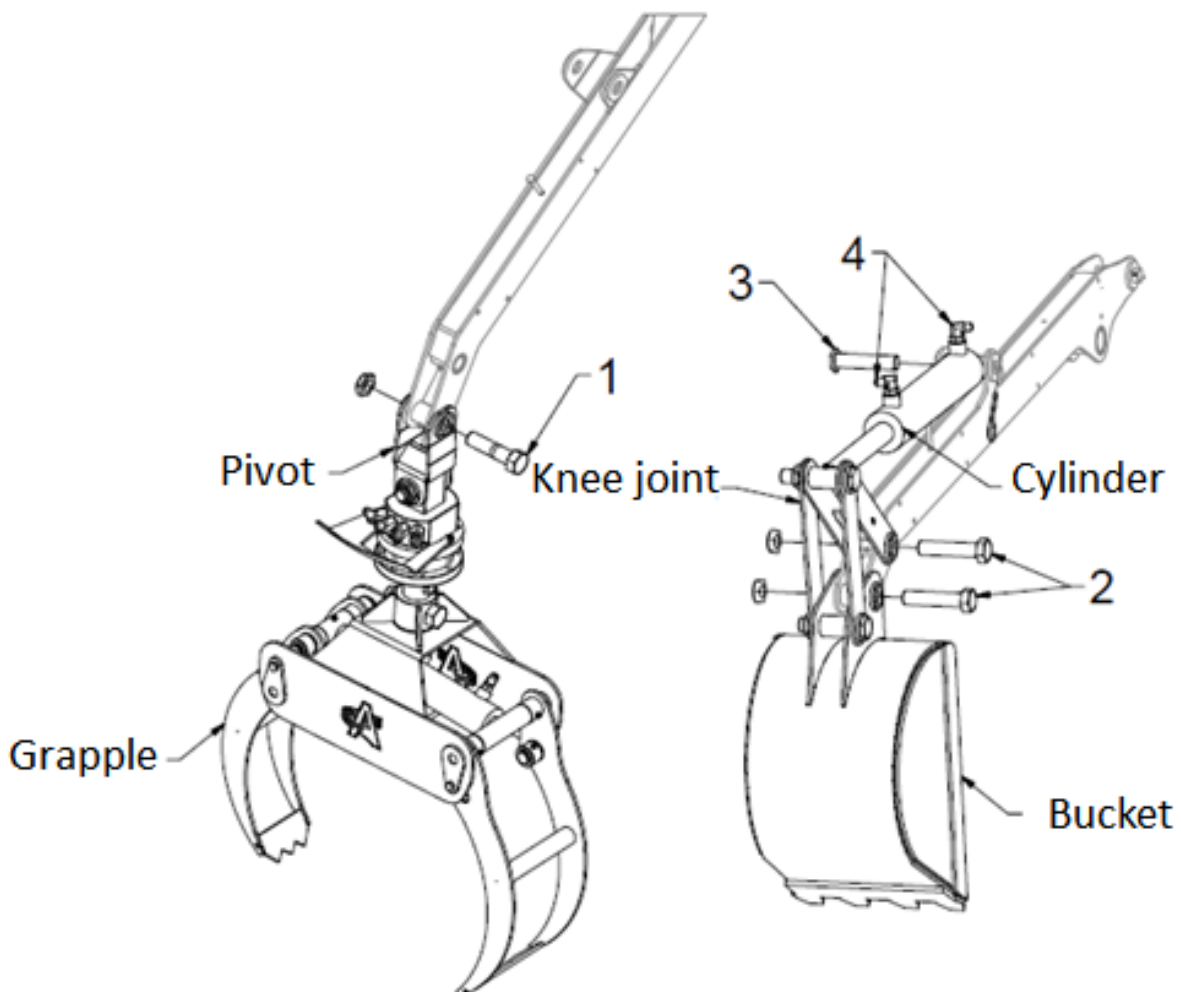


## INSTALLATION BUCKET LOG LOADER

### M90 & M115:

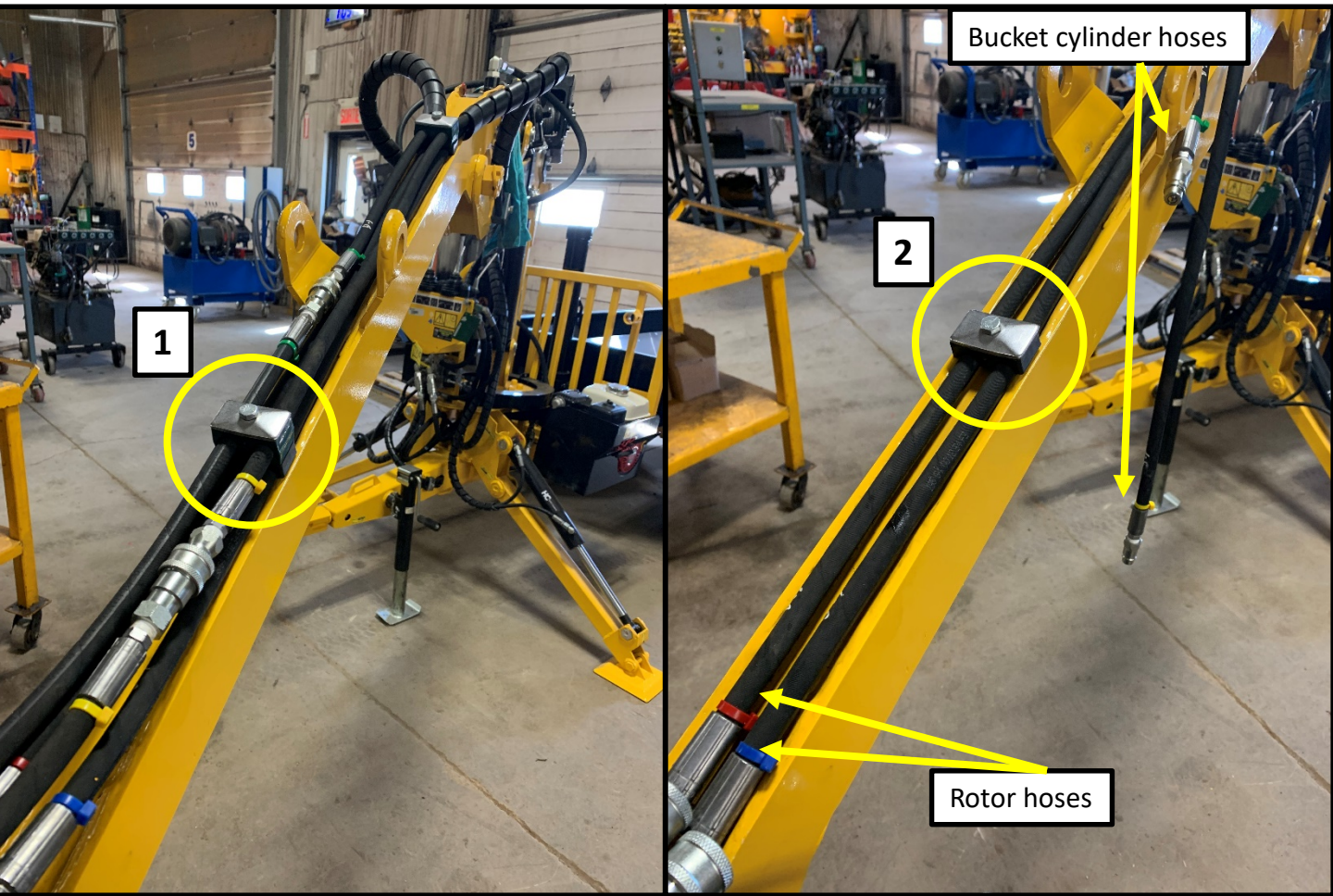
- 1** – Remove the grapple by taking the upper shaft out of its pivot (1) and uncoupling the hose clamps on the four hydraulic hoses.
- 2** – Secure the ends of the bucket knee joints to the two mounting points with screws and nuts (2).
- 3** – Secure the free end of the bucket cylinder to the mounting point with screws and nuts (3).
- 4** – Identify the hydraulic hoses which controlled the grapple, and attach them to the bucket cylinder (4).



## INSTALLATION BUCKET LOG LOADER

### M90:

The hoses that were used to control the grapple and the rotor must be disconnected and the double clamp (1) must be unscrewed to release the 2 hoses above that will be used to connect the bucket cylinder. Tighten the simple cramp (2) to fix the 2 bottom hoses by pushing them a few inches towards the cramp, making sure that they do not come into contact with the knees of the bucket that you installed previously.





## INSTALLATION BUCKET LOG LOADER

### M90:

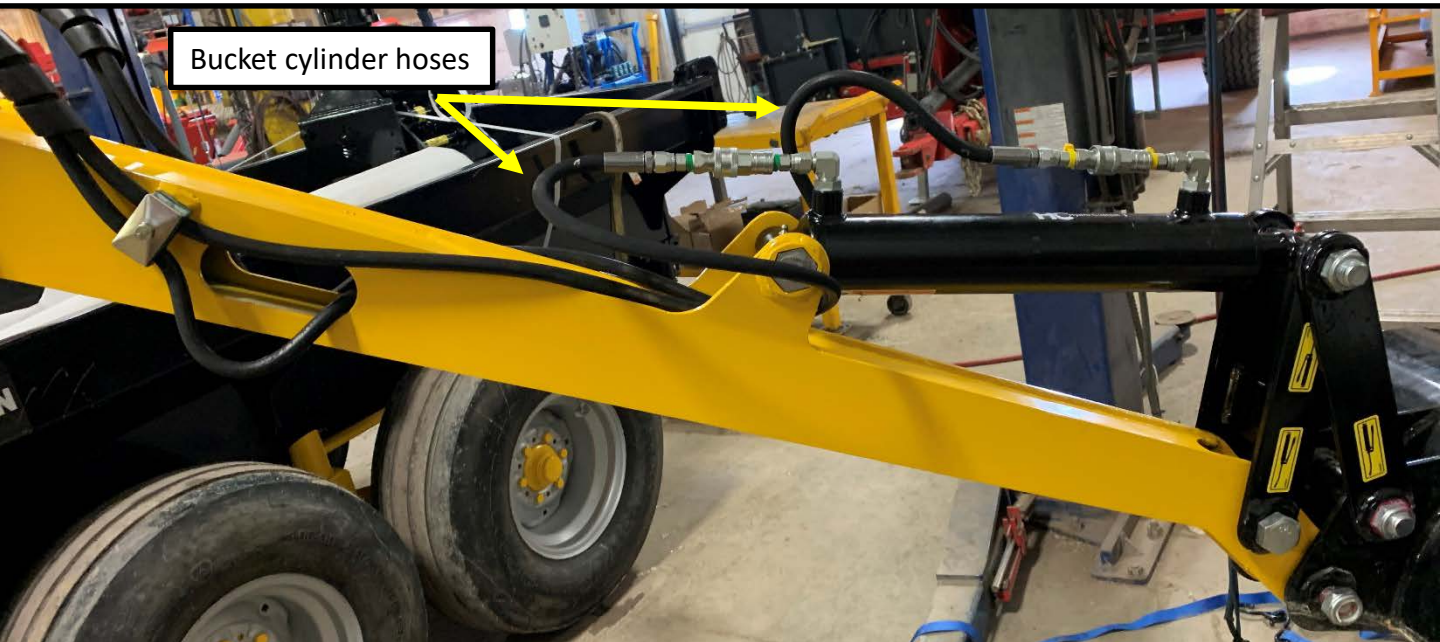
Place the hoses so that they do not collide with the bucket cylinder or any other moving parts.



## INSTALLATION BUCKET LOG LOADER

### M115:

The hoses used to control the grapple need to be removed from the stick and are connected to the cylinder of the bucket, and the hoses used to rotate the rotor must be tucked inside the stick completely to avoid breakage.





## INSTALLATION BUCKET LOG LOADER

### M115:

Place the hoses so that they do not collide with the bucket cylinder or any other moving parts.



## INSTALLATION BUCKET LOG LOADER

### M90 & M115:

To increase bucket reach (if desired) you can change the position of the mast cylinder base pivot pin in the bottom hole.

