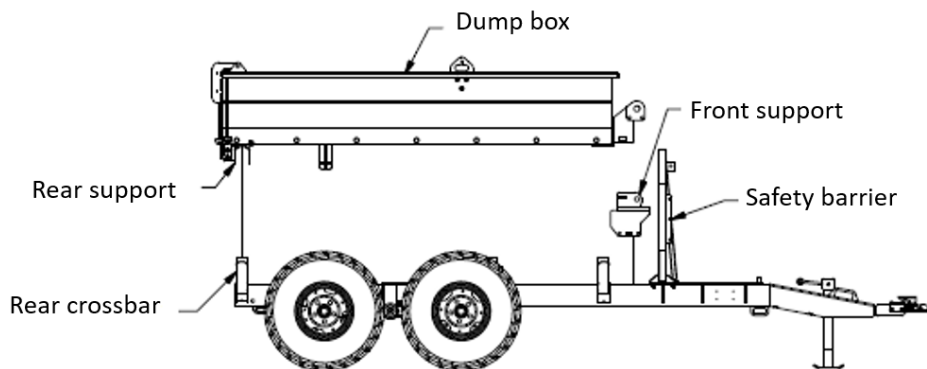
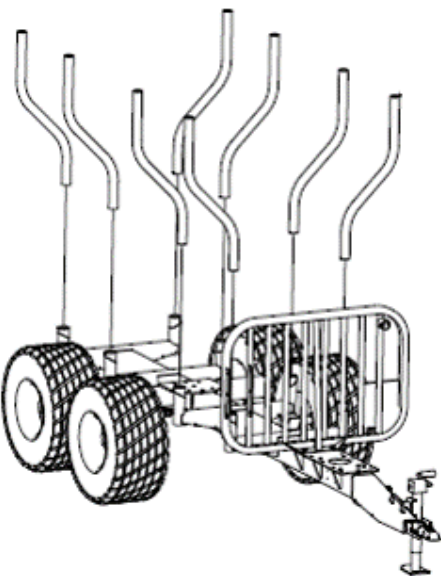
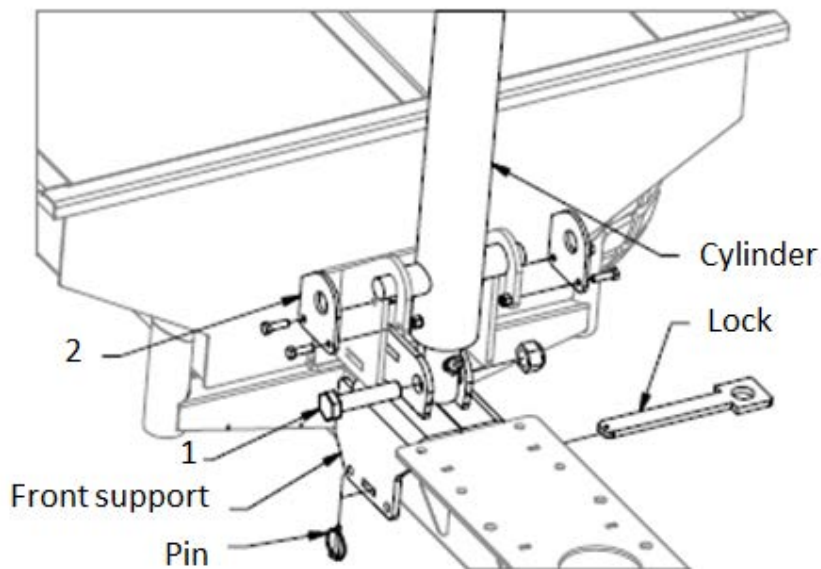
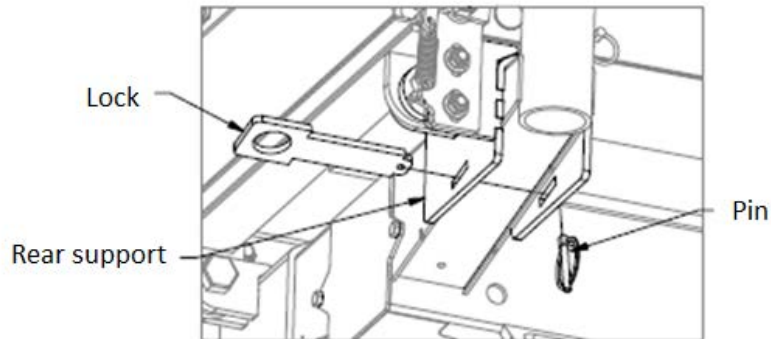


INSTALLATION DUMPER LOG LOADER

1. Remove the eight posts on the sides of the trailer.
2. Place the front support between the safety barrier and the front crossbar.
3. Place the dump box on the trailer so its rear supports straddle the rear crossbar.
4. Lock each rear support on the dump box with a lock and a pin.
5. Secure the hydraulic cylinder to the front support with a nut and a bolt (1).
6. Reattach the cylinder to the dump box with plates, nuts and bolts (2).
7. Secure the front support with a lock and a pin.



HYDRAULIC DUMPER LOG LOADER

Hydraulic dumper connected to a tractor:

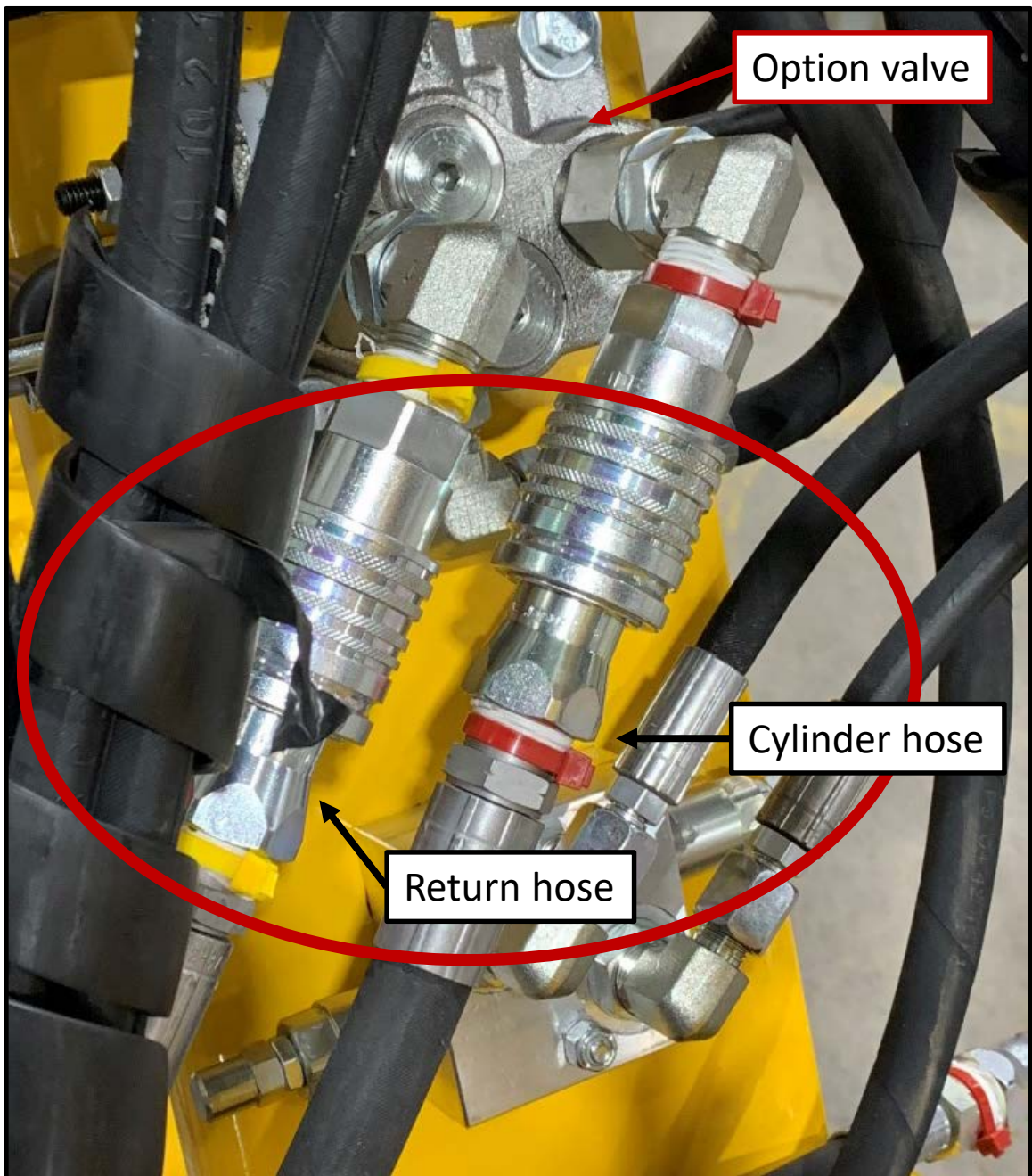
If the loader is equipped with a winch, disconnect the 2 hydraulic hoses that connect the winch to the option valve. Pass the cylinder hydraulic hose between the base of the loader and the right stabilizer.



HYDRAULIC DUMPER LOG LOADER

Hydraulic dumper connected to a tractor:

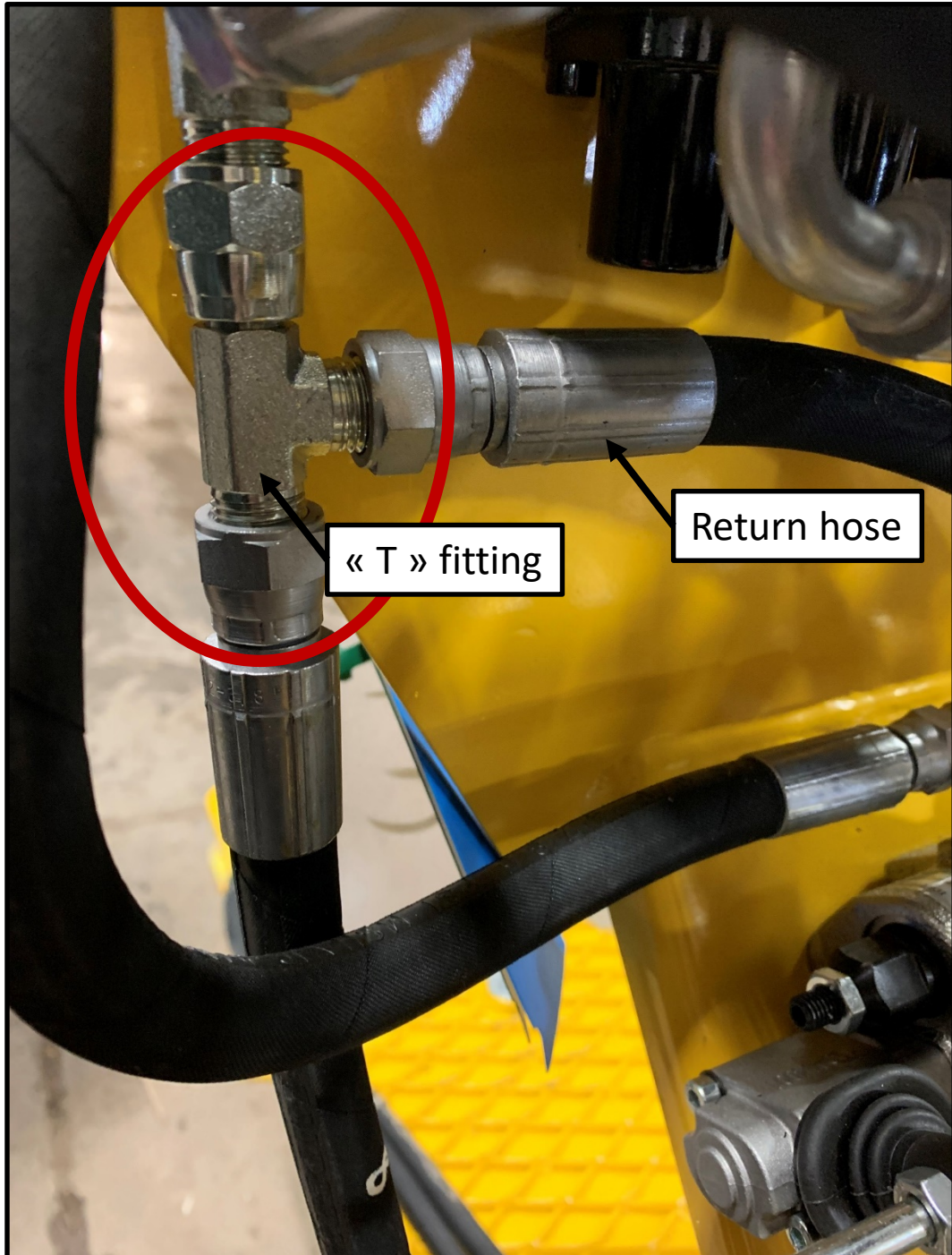
Connect the dump cylinder hose quick connect and the return hose quick connect to the option valve.



HYDRAULIC DUMPER LOG LOADER

Hydraulic dumper connected to a tractor:

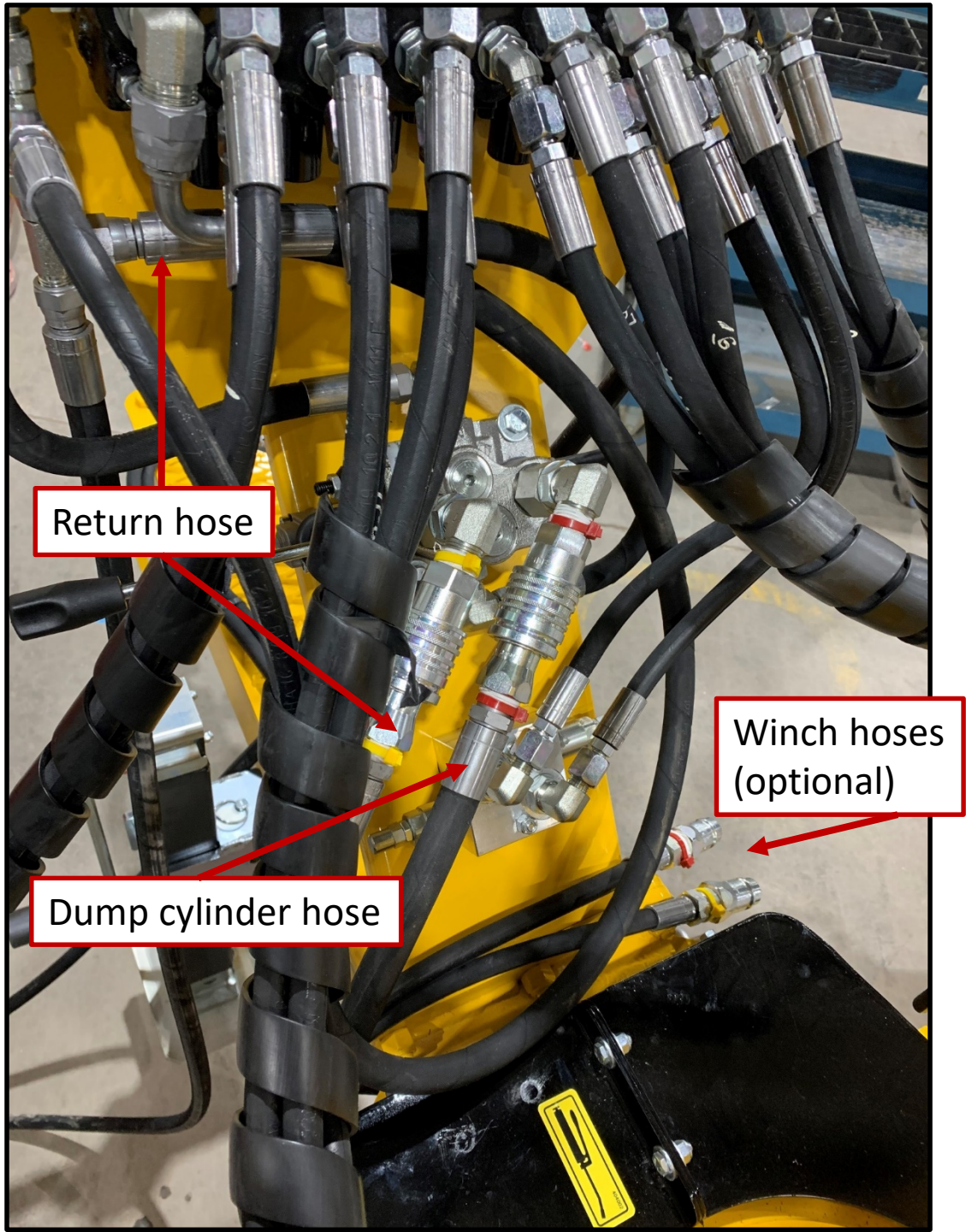
Install the hydraulic "T" fitting of the return hose under the outlet of the main valve.



HYDRAULIC DUMPER LOG LOADER

Hydraulic dumper connected to a tractor:

General view once the connection is complete.



HYDRAULIC DUMPER LOG LOADER

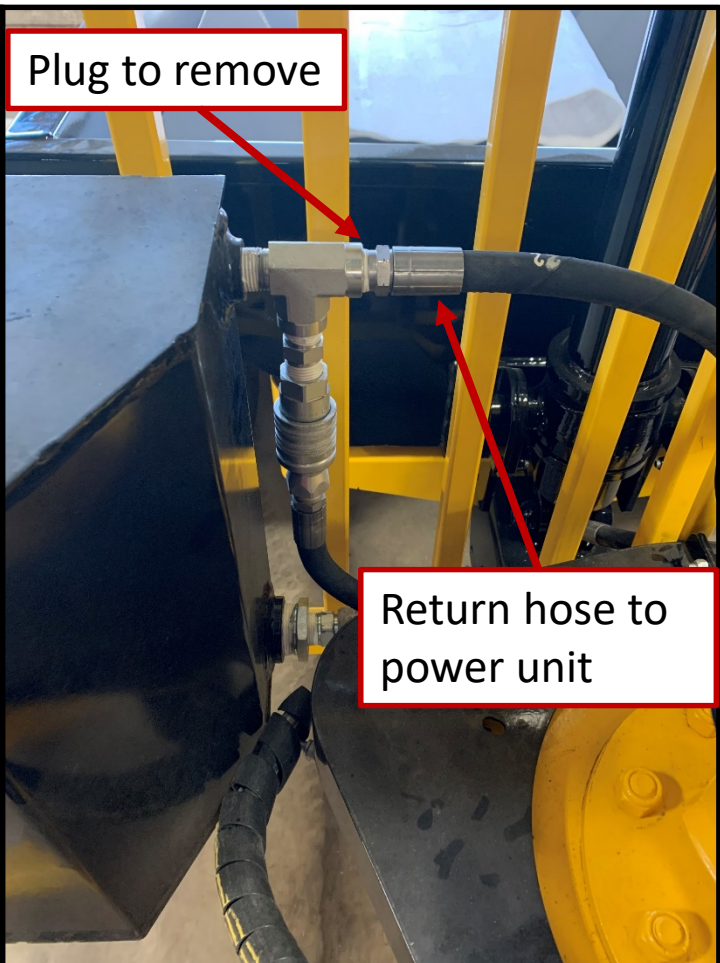
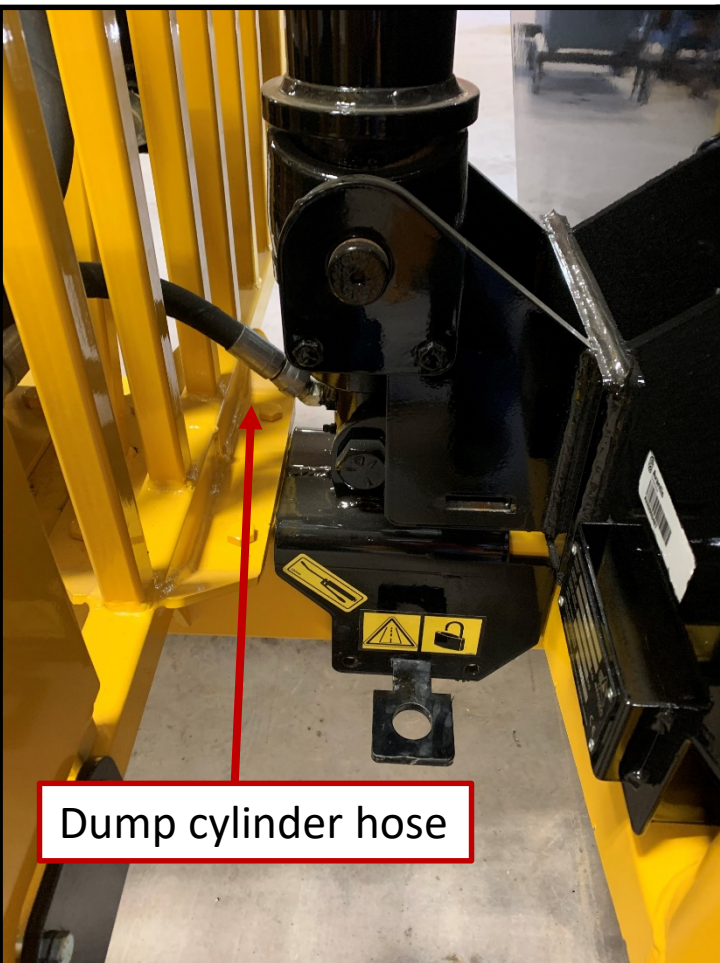
Hydraulic dumper connected to a power unit (Honda):

If the loader is equipped with a winch, disconnect the 2 hydraulic hoses that connect the winch to the option valve.

If without a winch, install the option valve and install the hydraulic hoses in the same way.

Pass the hydraulic cylinder hose between the loader grid and the base and then connect it to the option valve.

Remove the plug from the "T" fitting that connects to the return to the power unit, to connect the return hose supplied with the dump box.



HYDRAULIC DUMPER LOG LOADER

Hydraulic dumper connected to a power unit (Honda):

Connect the dump cylinder hose quick connect and the return hose quick connect to the option valve.

