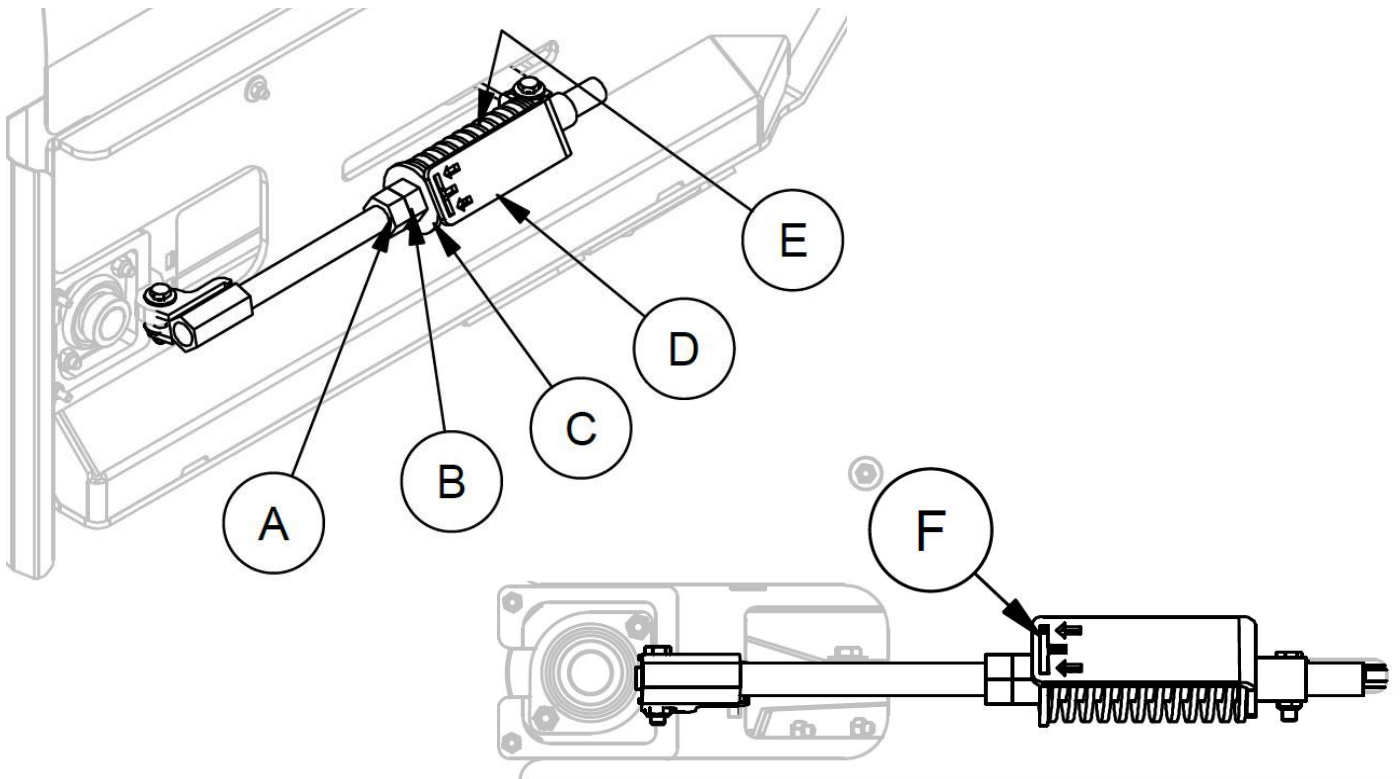


## Adjusting the tension of the belt

1. Unscrew bolt (A) so that it does not touch bolt (B).
2. Screw bolt (B) to compress spring (E), or unscrew it to loosen spring (E) so that metal washer(B) is beside slot (F) indicated with guide arrows (D).
3. Tighten bolt (C) until it rests firmly against bolt (A).



Make sure the belt is well placed above each supports of the conveyor.

