

QUICK START FUSION720 Xtractor



INLINE WRAPPING

INDIVIDUAL BALE WRAPPING



FUSION

- Inline round and individual round bale wrapper
 - Equipped with patented hydraulic push off system “**XTractor™**”
 - Inline wrapping capability:
 - Up to 6' diameter
 - 4' or 5' length
 - Individual wrapping capability:
 - Up to 5' diameter
 - 4' to 5' length
-
- **Wrap up to 180 bales / hour (inline)**
 - **Up to 50 bales / hour (individual)**





1. Find out the best wrapping area and put the machine there.
2. Remove the tongue and put it at its storage place (close to the steering wheel under the left fender)
3. If necessary, unlock the steering axle by removing the locking pin ([steering pin](#))
4. Unlock the front gate (mechanic) and the ball valve to release the cylinder ([front gate lock](#))
5. Adjust your bale guides and cone rollers on the exit ramp of the wrapper ([bale size](#)) to the diameter of bale you will be wrapping
6. Make sure that the gas tank is full, if the wrapper is equipped with the high capacity gas tank, open the valve under the tank and select the tank with the selector valve (close to the Honda engine)
7. Connect the battery wires; and turn the Honda key switch to ON
8. Pull the emergency stop button to turn on the computer ([control panel image](#)) line # 12
9. Select the mode on the first screen of the computer for inline and start the engine with the computer ([computer image](#)) button # 3
10. Use the lever on the dash panel to put the engine at full throttle ([control panel image](#)) button #2 . The computer will advise you if the engine is not at 3600rpm. It must be at this RPM to function correctly
11. Press the green checkmark (Button 9) (this will start the automatic setup sequence) Follow the instructions you find on the screen (If the computer requests that you take out the bale spears do so by using the lever close to the Honda engine) ([bale spear](#))
12. Open the cut and hold system by pressing the button #14 on the control panel. [Attach plastic](#) to the cut and hold as shown. Then press the same button on the control panel and the machine will load the cut and hold system (hoop will move so be careful).
13. With the lifting lever (on the main valve), level the machine to avoid the first bales from falling down the roller bed (
14. Place the hoop wrap / move wrapper valve in the move wrapper position *Smart start* ([explanation smarts start](#)) ([control panel image](#)) line # 8
15. Adjust the hoop speed (depending of the number of layers needed) with the valve handle on the control panel ([control panel image](#)) line # 7
16. After 2 bales are wrapped you can use the lift lever to lower wrapper and the front gate to the ground ([control panel image](#)) line # 5
17. When you have 4 to 5 bales on the ground you can place the hoop wrap / move wrapper valve in the wrap position and adjust the compaction of the bales ([control panel image](#)) line # 9 (traction wheels will be restricted) It should be between 500 and 1000 PSI depending of the conditions (ground, incline of the yard, bale weight, etc)
18. You can remove the controller from the dash panel and bring it inside the tractor with you. You will need to supply 12V to the monitor by connecting the supplied power cord *(cobo adapter) (image XXXXX)
19. Xtract you bales with the xtractor system™ when you have finished the tube of wrapped bales ([control panel image](#)) line # .

1. Find out the best wrapping area and put the machine there. When wrapping individually you will need space in front of the exit ramp of the machine and a stopper as the bale will roll off the machine.
2. Remove the tongue and put it in its storage place (close to the steering wheel under the left fender);
3. If necessary, unlock the steering axle by removing the lock pin close to the wheel ([steering pin](#))
4. Unlock the front gate (mechanic) and the ball valve to release the cylinder ([front gate lock](#))
5. Adjust your bale guides and cone rollers on the exit ramp of the wrapper ([bale size](#)) to the width of bale you will be wrapping
6. Make sure that the gas tank is full, If the wrapper is equipped with the high capacity gas tank, open the valve under the tank and select it with the selector valve (close to the Honda engine);
7. Connect the battery wires; and turn the Honda key switch to ON
8. Be sure your stretchers are set a 9 and 3 o'clock. If necessary.
9. Pull the emergency stop button to turn on the computer ([control panel image](#)) line # 12
10. Select the mode on the first screen of the computer for individual and start the engine with the computer ([computer image](#)) button # 3
11. Use the lever on the dash panel to put the engine at full throttle ([control panel image](#)) button #2 . The computer will advise you if the engine is not at 3600rpm. It must be at this RPM to function correctly
12. Press the green checkmark ([computer image](#)) Button # 9 (will start the automatic setup sequence) Follow the instructions you find on the screen. (If the computer requests that you retract the bale spears do so by using the lever close to the Honda engine)
13. Lower the front gate ([control panel image](#)) line # 5
14. Open the cut and hold system by pressing the button #14 on the control panel. [Attach plastic](#) to the cut and hold as shown. Then press the same button on the control panel and the machine will load the cut and hold system (hoop will move so be careful).
15. You can remove the controller from the dash panel and bring it inside the tractor with you. You will need to supply 12V to the monitor by connecting the supplied power cord *(cobo adapter) ([electric connection](#))
16. Only at this time do you can put the bale in the machine for wrapping.

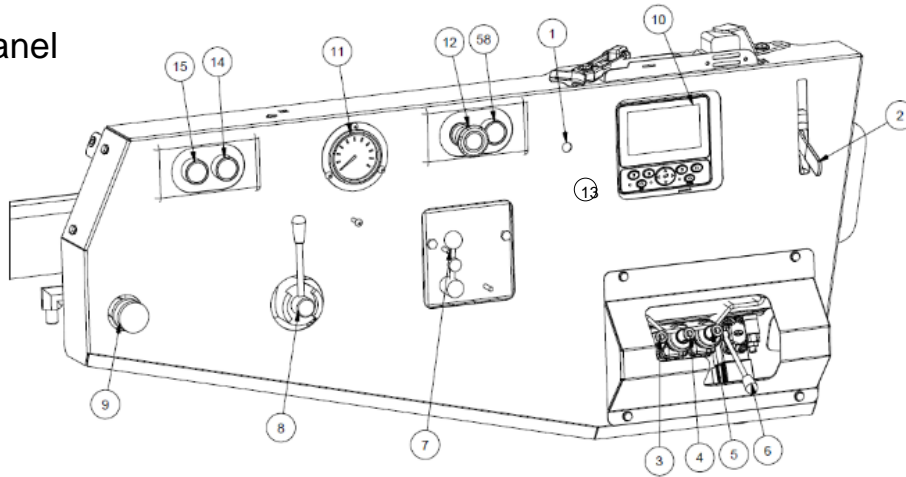


Back to
inline



Back to
individual

Control panel



1	WORKING LIGHTS
2	ENGINE THROTTLE CONTROL
3	XTRACTOR LEVER
4	FRONT DRIVE WHEEL LEVER
5	FRONT AXLE LEVER (LIFT THE FRONT OF THE MACHINE)
6	REAR WHEEL STEERING LEVER
7	HOOP SPEED CONTROL
8	SELECTOR VALVE: WRAPPING OR MORVE THE WRAPPER/ « SMART START»
9	HYDRAULIC COMPACTION VALVE
10	COMPUTER (CONTROL BOX)
11	HYDRUALIC COMPACTION GAUGE
12	EMERGENCY STOP
13	ENGINE START BUTTON
14	BUTTON TO ACTIVATE THE CUT AND HOLD (IN AND OUT)
15	BUTTON TO TURN THE HOOP 180°

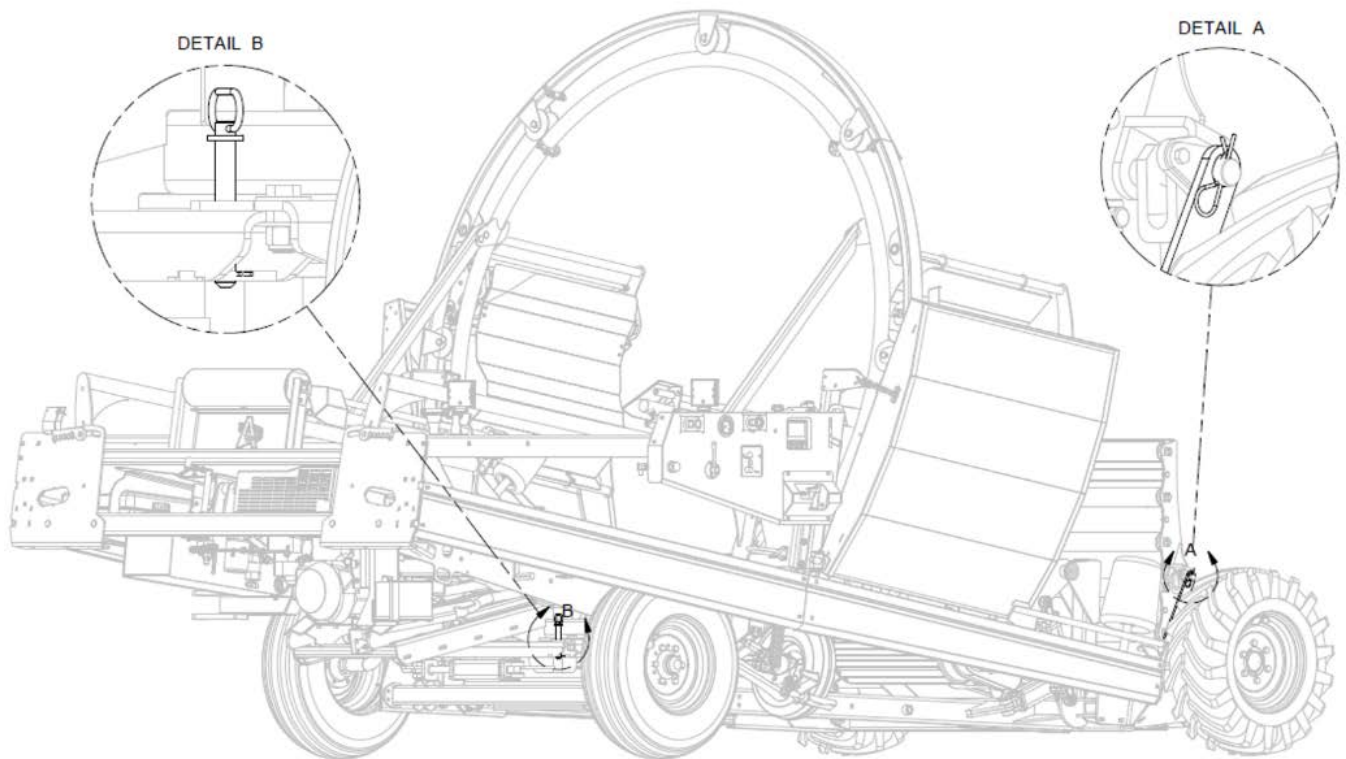


Back to
inline



Back to
individual

1. Make sure to retract the bale spears
2. Put the pin for transport in the steering axle (see below image)
3. Lift and lock the front tailgate in the up position (see below image)
4. Be sure that you remove the plastic film rolls from the stretchers
5. Be sure to turn off the Honda engine key
6. Turn off the gas valve for the Honda engine
7. The front axle must be at the highest position (as the traction wheels cannot touch the ground at any time while transporting the machine)





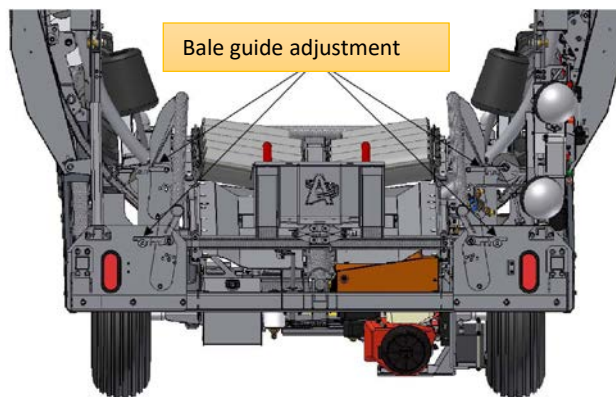
Back to
inline



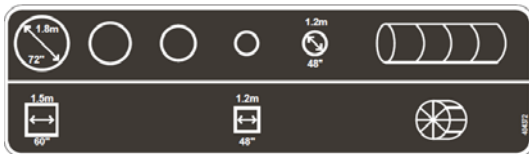
Back to
individual

Lift the locking mechanism from each end of the guide bars. The further out the bars the bigger bale.

Note: Both sides have to be in the same position. The cone rollers on the exit ramp must also be adjusted at this time.



Left



Right



← inline

← single



Back to
inline



Back to
individual

Install Plastic rolls

- To install your first roll of plastic you must have the stretcher on the side of the machine with the door that has a latch. To move the hoop you need to start the machine and follow the below steps.
 - 1) Start the engine
 - 2) Release the mechanical brake from the hoop wheel.
 - 3) Adjust the hoop speed control on the dash to 3. [\(control panel\)](#) line # 7
 - 4) Press the button on the control panel to move the hoop to the desired position [\(control panel\)](#) line #15
 - **For inline mode: Press the button to move the hoop so that the second stretcher is at a convenient place to load the plastic.
 - **For individual wrapping mode: Press the button on the control panel once to automatically place the stretcher in the correct place to load the plastic.
 - 5) Stop the engine.

Repeat the steps for the first roll of plastic to load the second roll. When finished you must close the hoop door securely as you will not be able to start the machine electronically with the door open.



Back to
inline



Back to
individual

Attaching the plastic to the cut and hold (individual wrapping sequence only)

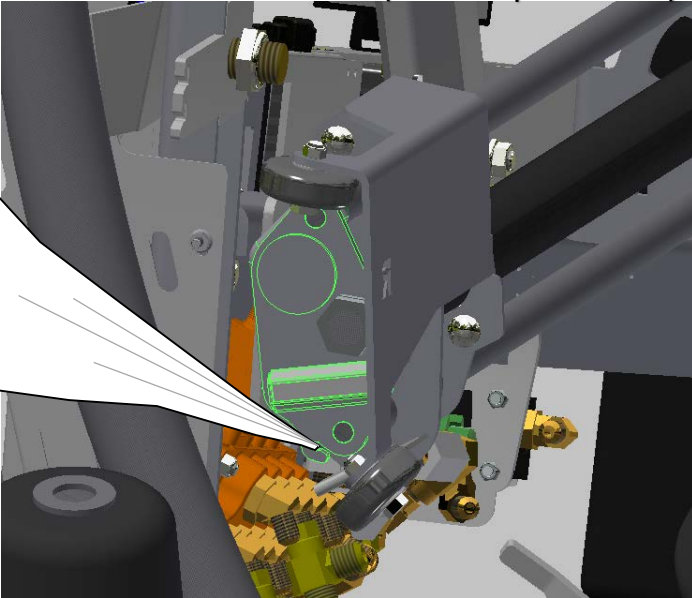
- In individual wrapping mode, it is necessary to Install the plastic in both cut and hold systems. To do this follow the below instructions:

Start the engine of the honda.

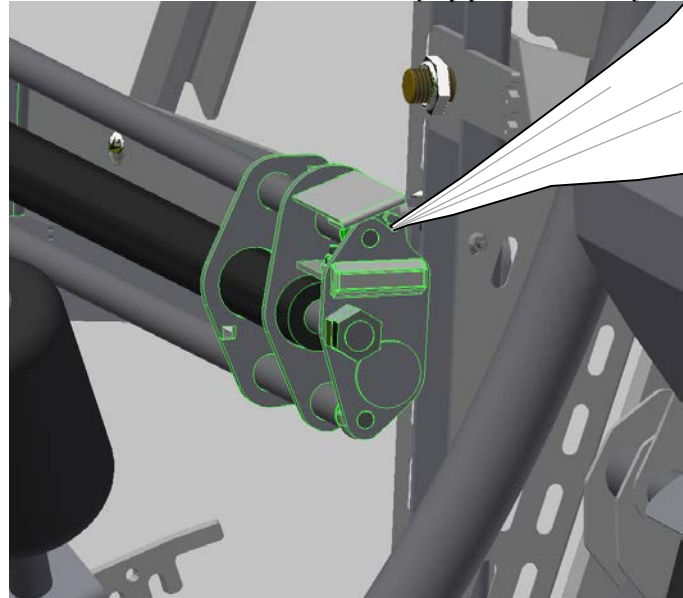
Press the green button on the control panel to open the cut and hold mechanisms.

You must then tie a knot at the end of each plastic roll and attach them to the cut and holds as in the below diagram.

Cut & Hold mechanism (Control panel side)



Cut & Hold mechanism (Opposite side)



Press the green button #14 on the control panel a second time to close the cut and hold. The hoop will move after to position itself to accept the bale.



Back to
inline



Back to
individual



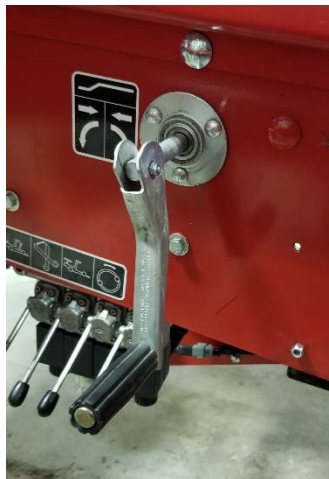
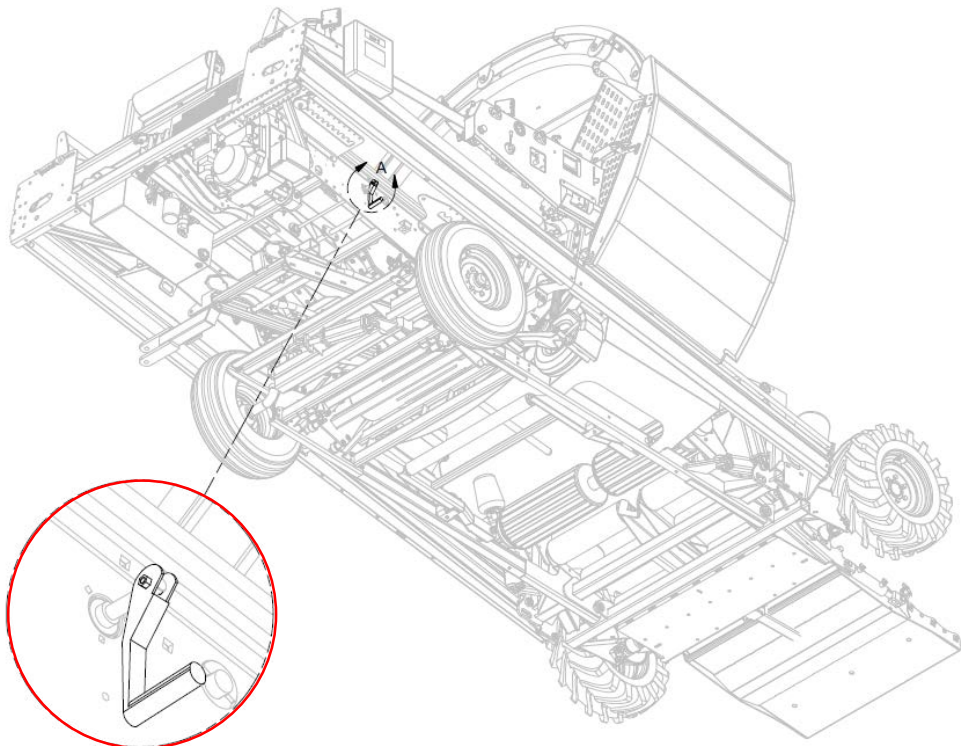


Back to
inline



Back to
individual

A hand lever located on the side of the wrapper is used to lift and lower the bale spears. (spears out for inline wrapping and in for individual) see below illustration.

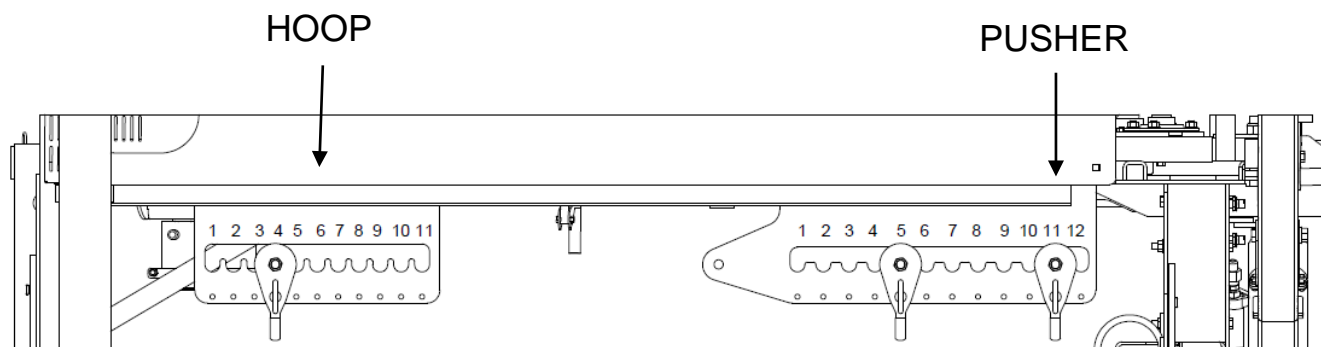



Back to
inline


Back to
individual

Adjustment of the pusher stroke and hoop start:

- Putting the sensor for the hoop start closer to the rear of the machine will start the hoop sooner (applying more plastic to the intersection of your bales)
- Putting the sensor for the pusher towards the rear of the machine will return the pusher earlier. For longer bales you must put further from the rear of the machine.



LENGTH OF ROUND BALES	SETTING
1.2 m (4 FT)	5TH HOLE FROM THE REAR OF THE MACHINE
1.5 m (5 FT)	11TH HOLE FROM THE REAR OF THE MACHINE



Back to
inline



Back to
individual

The Smart start is a function that Anderson Developed that permits the user to start the tube without the bales sliding on the ground. The function will help resolve the problem of the first bales dragging on the ground and tearing the plastic.

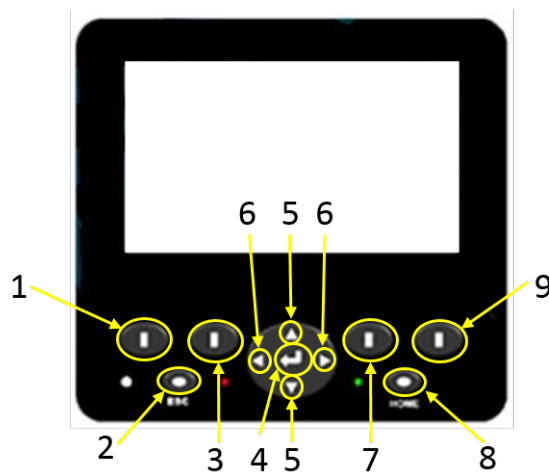
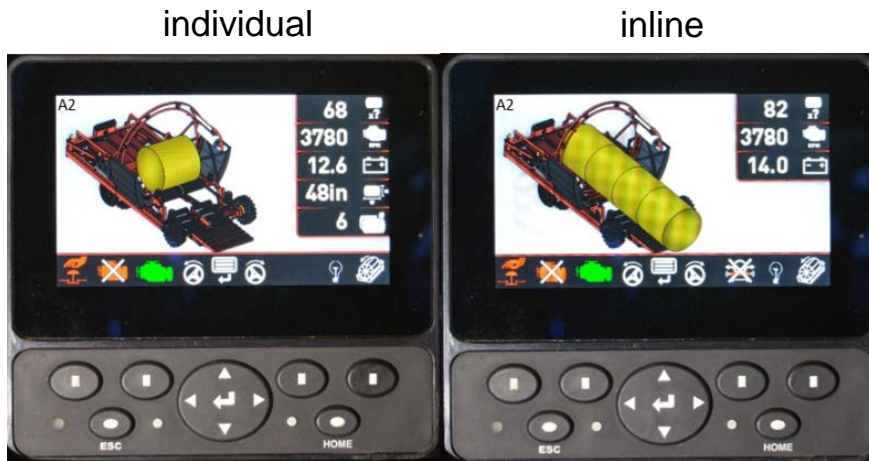
To properly use the smart start function you should leave the lever (image below) in the smart start position until there are enough bales on the ground to outweigh the pusher of the wrapper when in compression mode (lever changed to other position)



Back to inline

Photo of menu screens

Back to individual



Composant	Inline wrapping	Individual wrapping
1	Emergency stop button	
2	Stop the engine (on menue page) and go back one page for the rest of the functions	
3	Start engine	
4	Menu	
5	Navigate through the menu	
6	Steer the wrapper remotely	
7	Automatic pilot function	
8	Go back to menu page and also used for turning on the work lights	
9	Start individual wrapping setup sequence	Will start the individual wrapping sequence. This button is only used for testing and should not be used unless instructed.