



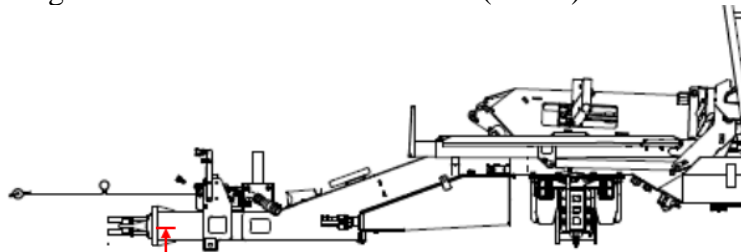
STACKPRO5400/7200

STARTUP SEQUENCE CHECKLIST

To insure a powerful impact of a first demonstration, make sure to go through those steps, in the following order:

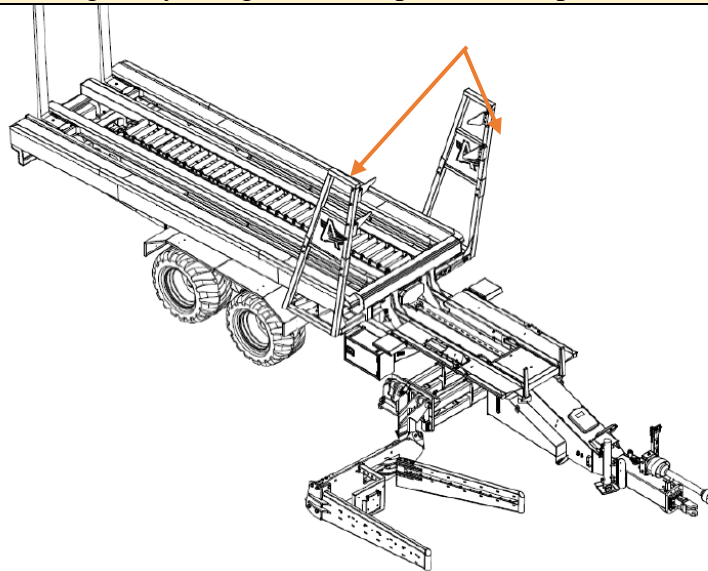
1. Adjusting the drawbar at 22.5inch (57 cm) above the ground, when hooked to the tractor.

- a. At the extremity of the drawbar, you will find a laser plate with several holes, which allow you to move up or down the height of the hitch that will be hook to the tractor. The distance between the center of that rectangular plate with holes, and the ground surface shall be 22.5 inch (57 cm).



- b. Height from the middle of tow bar to

2. Install the side gate by using forklift to put them on place

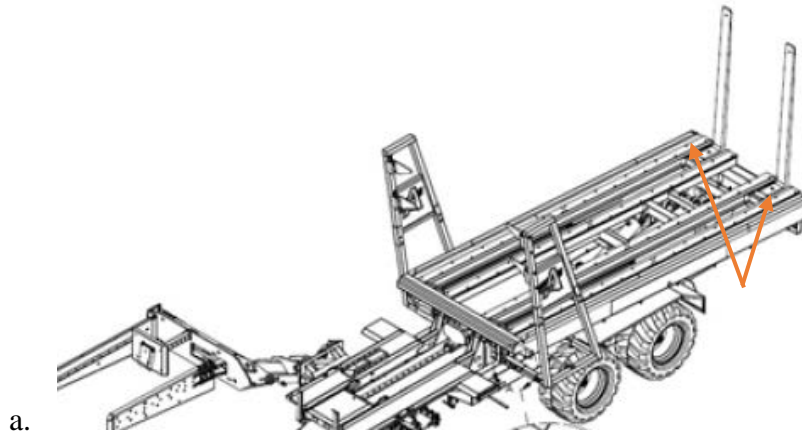


- a.



ANDERSON

3. Raise the fork tines on the main dumper and secure them with the Allen bolts provided with it.



4. Install the PTO and adjust the length accordingly to the tractor.

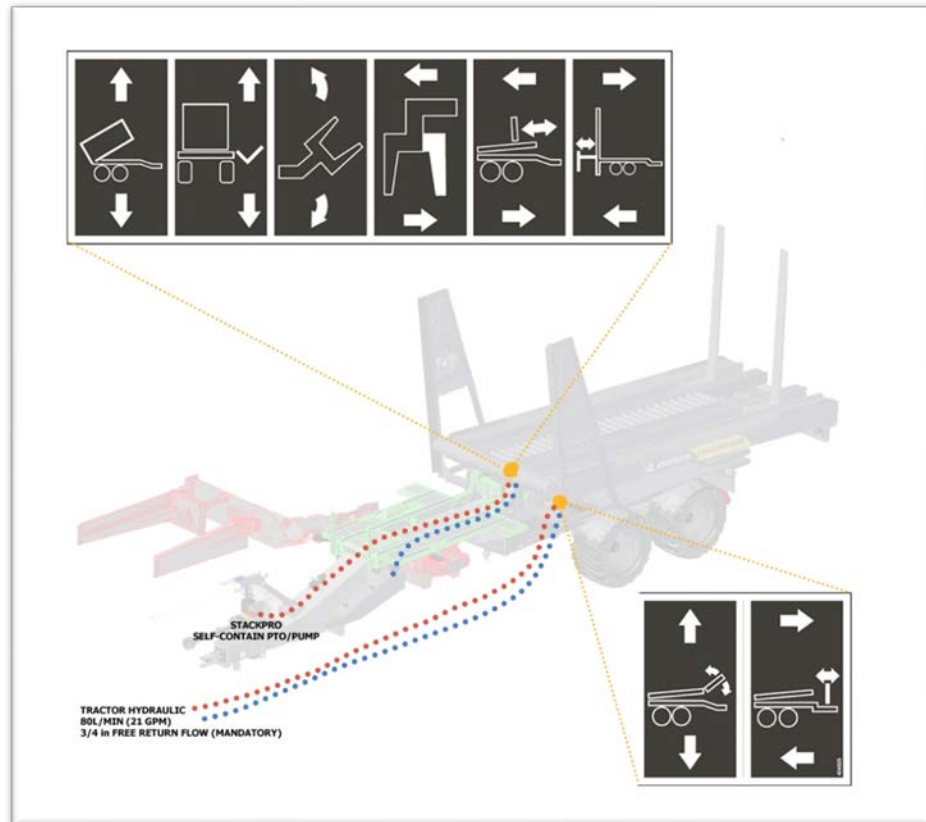
- a. The drive shaft supplied with the machine can be adapted for most Category 3 tractors. However, its length needs to be checked when changing tractors.
- b. A drive shaft that is too long for the tractor's PTO could damage the drive shaft and PTO. A drive shaft that is too short could also be damaged.
- c. To ensure that the drive shaft is not too long:
 - i. Without connecting the drive shaft to the tractor, steer the tractor as far as possible from the machine. In this position, the drive shaft is fully retracted in relation to the tractor.
 - ii. Try to bring the drive shaft next to the tractor's PTO. If it is too long, shorten it.
- d. To ensure that the drive shaft is not too short:
 - i. Position the machine so that the drive shaft is fully extended (the lowest or highest position, depending on the tractor model, for a coupled machine and the tractor aligned with the machine for a semi-mounted machine).
 - ii. Ensure that when in use, the maximum length is less than "closed length + 1/3 closed length".
 - iii. If the drive shaft is too short, contact your distributor.



ANDERSON

5. Hook the hydraulic hoses to the tractor

- a. 1 set for the loading arm translation from transport to working mode
- b. 1 set for the side gate adjustment
- c. 1 set for providing hydraulic flow to the high speed cycle valve.
 - i. Some functions of the Stackpro5400/7200 (model 2021 & 2022) are powered by the PTO pump of the Stackpro, and some others are powered hydraulically from the tractor as shown below.



- ii. This is to allow the machine to run two (2) hydraulic function simultaneously without slowing the process by dividing the hydraulic flow 50-50 between two (2) functions.
- iii. This high-speed cycle valve is powered directly from the tractor.
- iv. It is mandatory to connect the return line on a “pressure free” return line.



- v. It is also mandatory to adjust the hydraulic flow coming from the tractor to that valve, so it do not exceed 21 GPM (80 Liter/min).
- d. 1 set for locking of putting the steerable axle in floating mode (optional)



ANDERSON

6. Open the ball valve of the hydraulic suction line in order to let the oil going from the oil tank to the pump.

7. Make sure the hydraulic level of the oil tank is showing full on the gage.

8. Connect the touchscreen display to a reliable 12V power source on the tractor.

9. Connect the touchscreen display communication cable to the Stackpro

10. Turn on the computer

11. Start the tractor PTO on the 1000rpm gear

12. Engage the hydraulic from the tractor to the high speed valve on “CONSTANT FLOW”. The flow should be around 10-15 GPM. Hydraulic flow set way above 15 GPM might throw an error code for excessive back pressure.

13. Before picking the first bale

- a. Measure the bale length, height, width using a tape measurement
- b. Adjust the loading arm setting to match the bale sizes
- c. Adjust hydraulically the spacing between side gates according to the length of the bale.
- d. Adjust the loading table bale sensor according to the bale width.
- e. Select the bale size on the computer that match with the bale you intend to pick
- f. Adjust the hydraulic pressure of the loading arm squeezer on the screen setting, at a minimum of 2200PSI to start with (160 BAR). Adjust the pressure according to the reaction of the bale.

14. You are good to go.